

CERTIFICATE

CERTIFIED LAND CORNER

No. 65

I, Gary L. Dechant, do hereby certify that on the 1st day of February 1994, I found (evidence) (~~no evidence~~) of the SW corner of Section 14, T 19 N, R 2 W Fourth Principal Meridian, and I re-established said corner according to the Wisconsin Statutes as shown and described hereon.

Dated this 1st day of Feb. 1994.

Gary L. Dechant  
 Registered Land Surveyor S-1744  
 Title

History of corner establishment since Original Government Survey

L. A. Feddersen shows setting a corner in his survey of 1975.

Description of corner evidence found:  
 Accepted existing 3/4"x24" iron bar, set by Feddersen, which landowners have used as corner since 1975, at remains of 4-way fence corner as best available evidence. The half mile to the west is approximately a chain and a half short, while the half mile to the east is approximately a chain long. It appears that the rough terrain, as well as a miscue of a chain, during the original survey, were the factors for this corner location. Fred Holden's survey in 1902, further supports this SW corner location, as the two are very close to being a straight line along the west side of the section. Also, the broken fence line along the west line of the SW 1/4 is very straight between the W 1/4 corner and this SW corner location.

NOTE: It has been made known to me that Feddersen set this iron bar and did not return to set a Harrison, as his map shows, or to get ties for the corner.

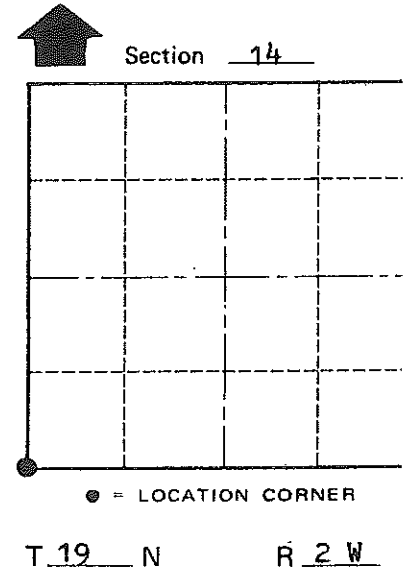
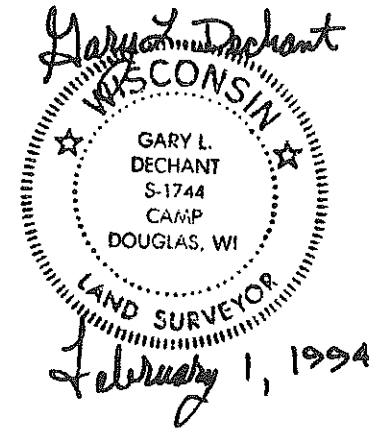
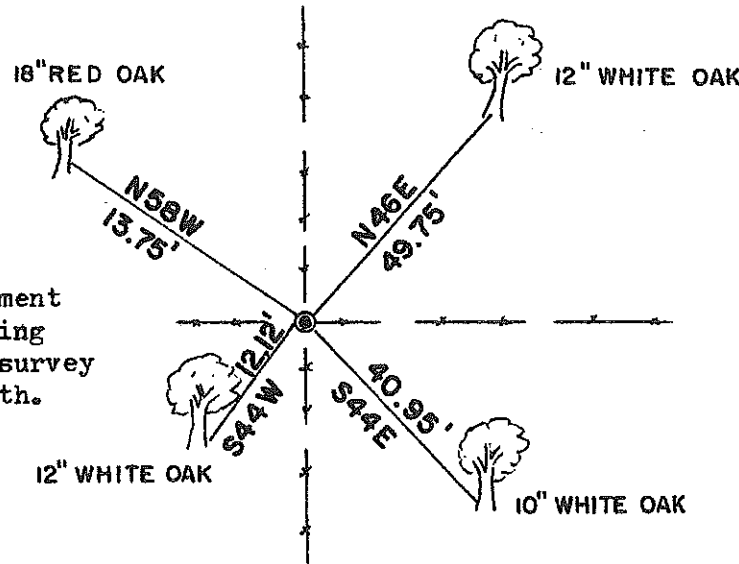
Description of corner and witness monuments, references and accessories used to perpetuate the original or re-established location of this corner:

Witnesses to corner location:

David E. Madison

Gary L. Dechant

Set Harrison Monument between two existing flat stones, set survey sign 1/2 foot north.



• = LOCATION CORNER

WISCONSIN

(Trees double blazed with 20d nail set)

COUNTY SURVEYOR FORM NO. 1

SURVEY CONTROL ORDER

Horizontal	_____
Vertical	_____

WISCONSIN COORDINATE SYSTEM

Corner	East (X)	North (Y)	Elevation (Z)	Zone
Control Sta. Name				

~~City Village or~~ Town Grant

County of Monroe