

21902130000

I, William C. Jung, do hereby certify that on the 22nd day of June 1979, I found (evidence) () of the Southwest corner of Section 18, T 19 N, R 1 W Fourth Principal Meridian, and I re-established said corner according to the Wisconsin Statutes as shown and described hereon.

Dated this 5th day of Feb. 1981.

William C. Jung
William C. Jung, R.L.S. 1323
Title

History of corner establishment since Original Government Survey

A.S. Ingalls was at this corner in April of 1873. David Blencoe shows a stone at this corner in his notes of May, 1932.

Description of corner evidence found:

Found Blencoe's stone. Set a Harrison monument East of the stone as a witness monument.

Replaced N/A With N/A
On 1/4/83 Crew: Jung

Comments W. Kenyon was at this corner in June of 1885.

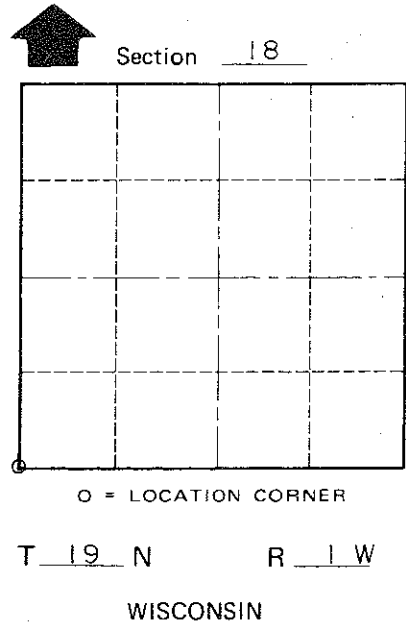
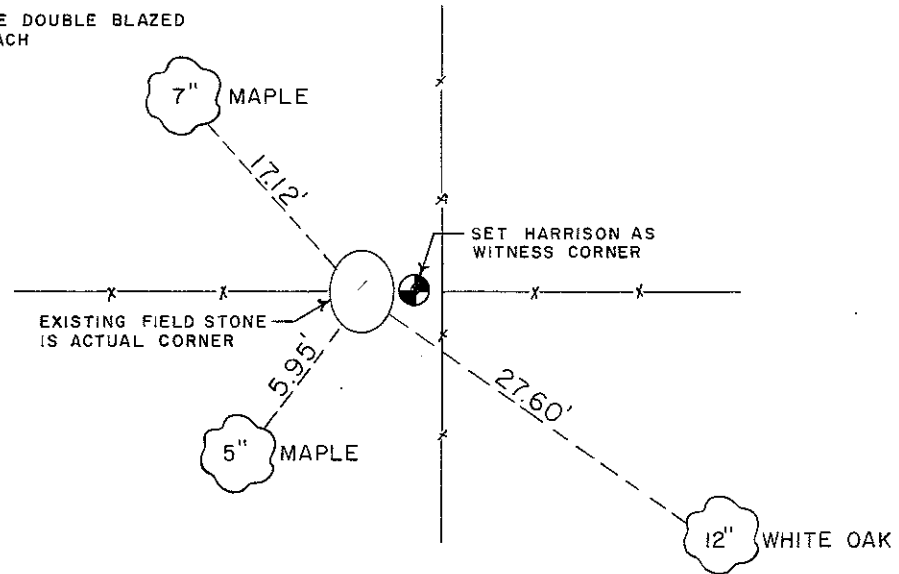
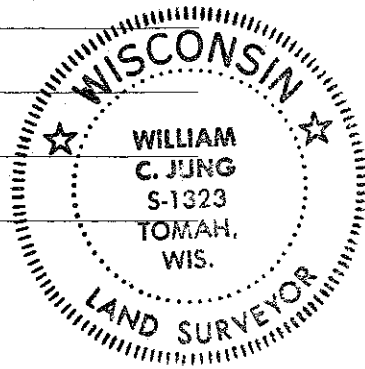
Approved: **HARLEY A. SIME**
MONROE CO. SURVEYOR

Description of corner and witness monuments, references and accessories used to perpetuate the original or re-established location of this corner:

NOTE: ALL BEARING TREES ARE DOUBLE BLAZED WITH NAIL & CAP IN EACH

Witnesses to corner location:

Jung
Pietz
Webb



SURVEY CONTROL ORDER

Horizontal _____
Vertical _____

WISCONSIN COORDINATE SYSTEM

Corner	East (X)	North (Y)	Elevation (Z)	Zone
Control Sta. Name				

or Town Lincoln
County of Monroe

COUNTY SURVEYOR FORM NO. 1