

42

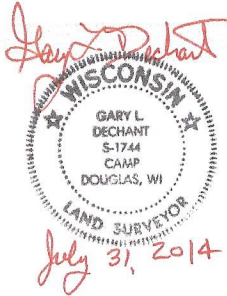
**U.S. PUBLIC LAND CORNER
MAINTENANCE**

**Corner ID : S1/4 Sec.12, T19N-R2W
21902120020**

<u>DATE</u>	<u>CREW</u>	<u>MONUMENT TYPE</u>
July 31, 2014	Zachariah P. Dechant Gary L. Dechant	Existing Stone(+) with Harrison on SW side as witness marker. Stone is up 6" west of square fence post. Pit is not visible. Only BT left is N5W, 76.87', 16" White Oak

<u>References:</u>	<u>Bearing</u>	<u>Distance</u>
1) Set 3/4" x 24" hex iron bar, down 6"	N40E	26.18'
2) Set 3/4" x 24" hex iron bar, down 6", 6' NW of 18" Red Oak	S30E	17.23'
3) Set 3/4" x 24" hex iron bar, down 6"	S42W	22.77'
4) Set 3/4" x 24" hex iron bar, down 6"	N58W	21.34'

COORDINATES:



FOR INFORMATION
SEE ENCLAVE 2196

CERTIFICATE

No. 42

I, Bryan H. Meyer, do hereby certify that on the 7th day of July, 1983, I found (evidence) no evidence of the North 1/4 corner of Section 13, T19 N, R 2 W Fourth Principal Meridian, and I re-established said corner according to the Wisconsin Statutes as shown and described hereon.

Dated this 15th day of July 1983.

Bryan H. Meyer

Deputy County Surveyor

Title

CERTIFIED LAND CORNER

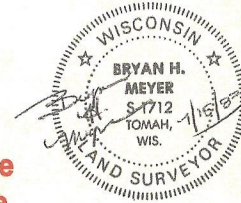
History of corner establishment since Original Government Survey

Fred A. Holden was here in April of 1902 and set a stone with an (X) mark.

Description of corner evidence found:

Found Mr. Holden's stone at the remains of an old down 4-way fence corner.

See Reverse Side For Maintenance



COUNTY SURVEYOR FORM NO. 1

Description of corner and witness monuments, references and accessories used to perpetuate the original or re-established location of this corner:
July 7, 1983 - 1:00 P.M.
Clear Humid, 80°±

Witnesses to corner location:

Bryan H. Meyer

Dallas Wilhite

Approved: **HARLEY A. SIME**
MONROE CO. SURVEYOR

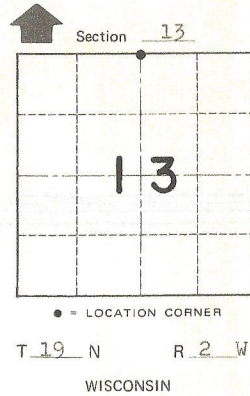
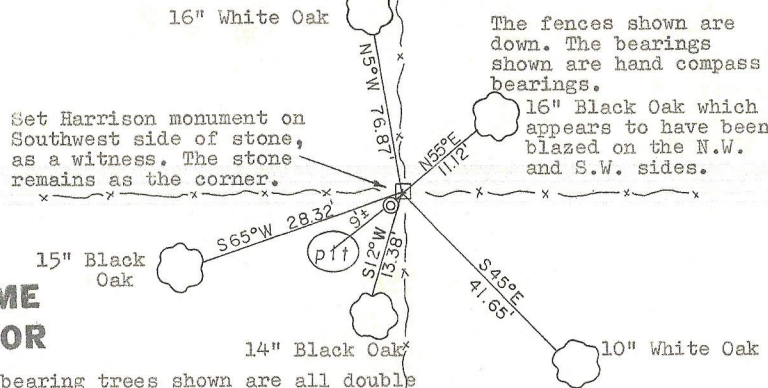
SURVEY CONTROL ORDER

Horizontal _____
Vertical _____

NOTE: The bearing trees shown are all double blazed with the blazes facing the corner. Distances are to nails in hacks in the side of each tree.

WISCONSIN COORDINATE SYSTEM

Corner	East (X)	North (Y)	Elevation (Z)	Zone
Control Sta. Name				



~~City of Monroe~~ Town of Grant

County of Monroe