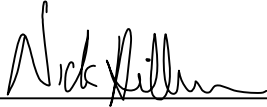


CERTIFICATE

I, Nicholas M. Hillmer, do hereby certify that this document and the data contained herein was prepared by me or under my direct supervision and that I am a duly Licensed Land Surveyor under the laws of the State of Wisconsin.

Dated this 23rd day of May, 2013



Nicholas M. Hillmer, P.L.S. 2909
Anderson Engineering of Minnesota, LLC.

CERTIFIED LAND CORNER

History of corner established since Original Government Survey

Fred A. Holden was here in August of 1911. In 1985 Gary L. Dechant found an unrecorded iron pipe in the centerline of the road. Dechant accepted it as the corner as it fit other field evidence very well. Dechant replaced the iron with a Harrison monument.

Description of evidence found

On February 20th, 2013, Anderson Engineering of Minnesota located the Harrison monument 6 inches below the road surface in the centerline of 16th Drive.

No. 21902290000

Description of corner and witness monuments, references and accessories used to perpetuate the original or re-established location of this corner:

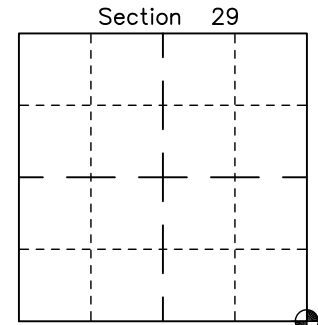
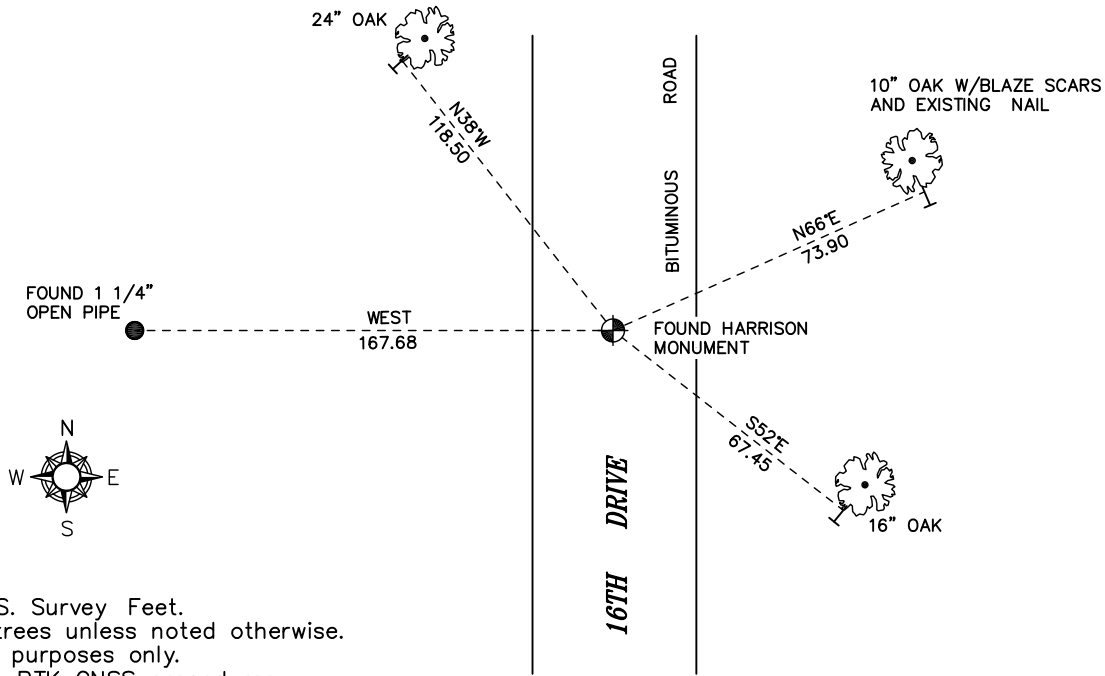
Witnesses to corner location:

Nick Hillmer
Dan Greenwald

MONROE COUNTY
COORDINATE SYSTEM
NAD 1983 (2007)

HARRISON MONUMENT
Northing (Y) 431530.79
Easting (X) 673136.64

Base Station - 22 182W
Northing (Y) 408053.25
Easting (X) 679287.00



⊙ = LOCATION CORNER
Corner I.D. SE 29
T 19 N R 2 W
Town of Grant
Monroe County, WI.

All distances are shown in U.S. Survey Feet.
Ties are to 60D nails set in trees unless noted otherwise.
Bearings are for tie reference purposes only.
Coordinates were derived from RTK GNSS procedures.

CERTIFICATE

I, Gary L. Dechant, do hereby certify that on the 16th day of December, 1985, I found (evidence) ~~(evidence)~~ of the NW corner of Section 33, T 19 N, R 2 W Fourth Principal Meridian, and I re-established said corner according to the Wisconsin Statutes as shown and described hereon.

Dated this 17th day of Dec., 1985.

Gary L. Dechant
Registered Land Surveyor-1744
Title _____

CERTIFIED LAND CORNER

No. 109

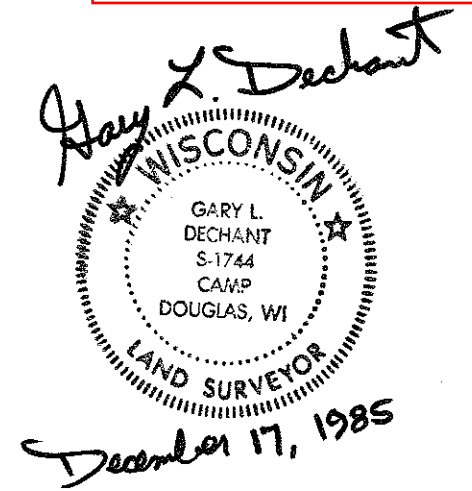
21902290000

History of corner establishment since Original Government Survey

Fred Holden was here in August of 1911.

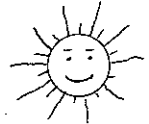
Description of corner evidence found:

Found unrecorded iron pipe in centerline of Road. Accepted it as corner as it fit other field evidence very well.

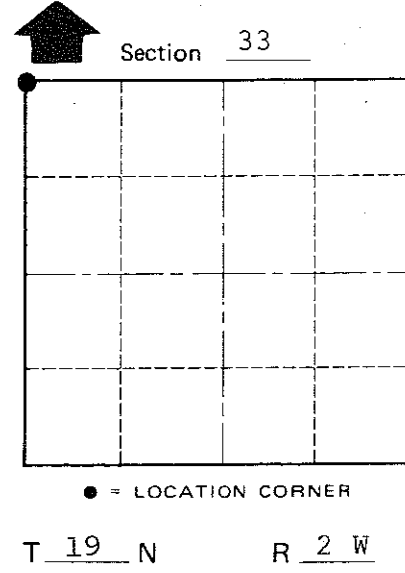
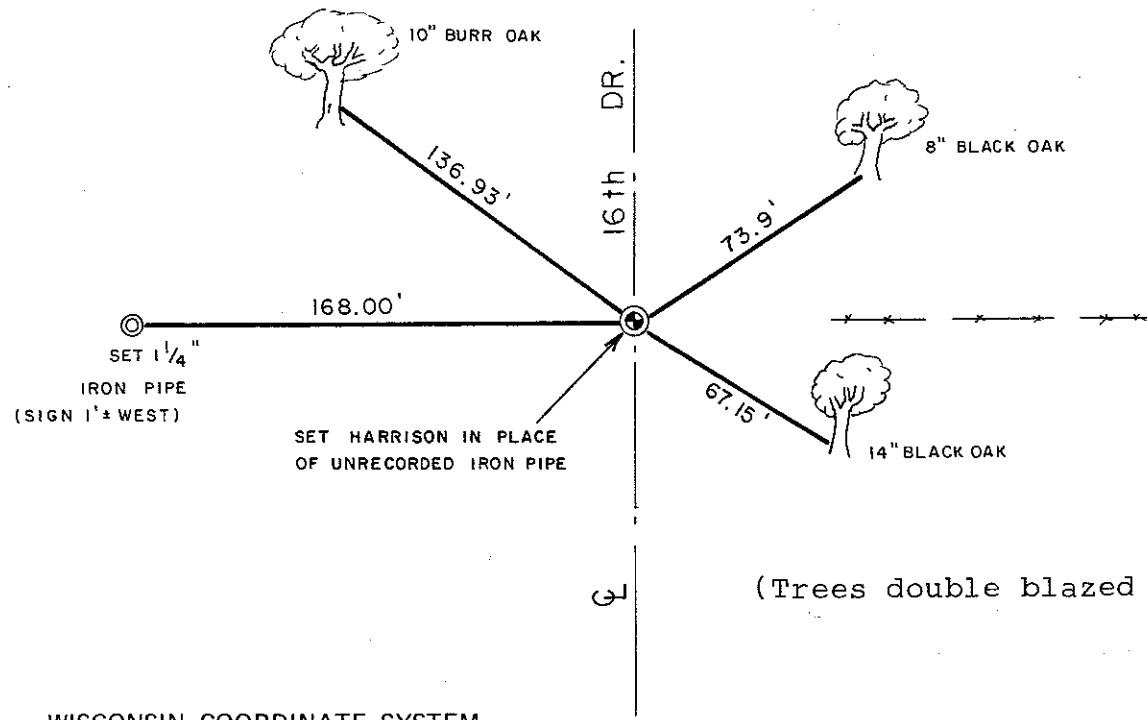


Description of corner and witness monuments, references and accessories used to perpetuate the original or re-established location of this corner:

Windy & cold, 5°±
1:35 P.M.
2.5' snow cover
Witnesses to corner location:



Lawrence A. Feddersen
Gary L. Dechant



(Trees double blazed with N&C's set)

COUNTY SURVEYOR FORM NO. 1

SURVEY CONTROL ORDER

Horizontal	_____
Vertical	_____

WISCONSIN COORDINATE SYSTEM

Corner	East (X)	North (Y)	Elevation (Z)	Zone
Control Sta. Name				

~~City, Village or~~ Town Grant
County of Monroe