

CERTIFICATE

I, Nicholas M. Hillmer, do hereby certify that this document and the data contained herein was prepared by me or under my direct supervision and that I am a duly Licensed Land Surveyor under the laws of the State of Wisconsin.

Dated this 21st day of May, 2013



Nicholas M. Hillmer, P.L.S. 2909
Anderson Engineering of Minnesota, LLC.

CERTIFIED LAND CORNER

History of corner established since Original Government Survey

Fred A. Holden was here in 1906. The 1940's McCoy boundary notes show a corner at this location. In 1989 Bryan H. Meyer found and accepted a 1 1/4 inch iron pipe with McCoy brass cap 2.5 feet above grade as the corner.

Description of evidence found

On December 19th, 2012, Anderson Engineering of Minnesota located the 1 1/4 inch iron pipe with McCoy brass cap. On April 21st, 2013, Anderson Engineering of Minnesota replaced the pipe with a 3/4 inch aluminum drive monument with a 3 1/4 inch cap, stamped "FORT MCCOY BOUNDARY" "2013" "ANDERSON ENG. OF MN."

No. 21902282000



Description of corner and witness monuments, references and accessories used to perpetuate the original or re-established location of this corner:

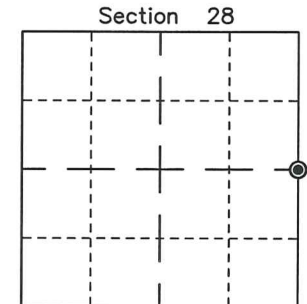
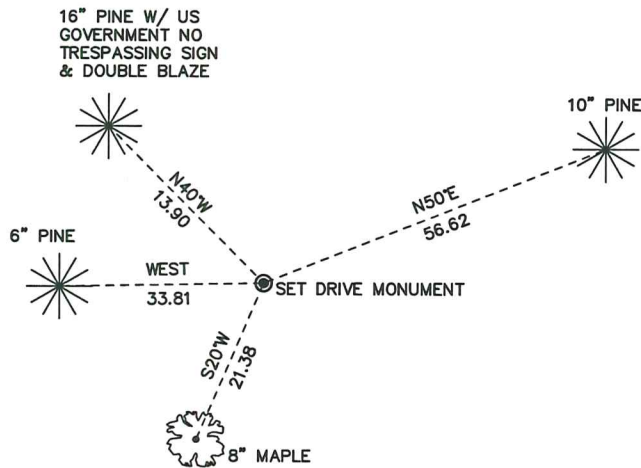
Witnesses to corner location:

Nick Hillmer
Josh Oslund
Dan Greenwald

MONROE COUNTY
COORDINATE SYSTEM
NAD 1983 (2007)

MCCOY DRIVE MONUMENT
Northing (Y) 434334.31
Easting (X) 678410.43

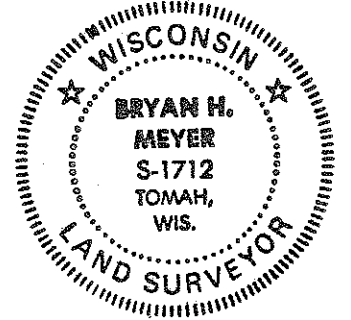
Base Station - 22 182W
Northing (Y) 408053.25
Easting (X) 679287.00



● = LOCATION CORNER
Corner I.D. E 1/4 28
T 19 N R 2 W
Town of Grant
Monroe County, WI.

All distances are shown in U.S. Survey Feet.
Ties are to 60D nails set in trees.
Bearings are for tie reference purposes only.
Coordinates were derived from RTK GNSS procedures.

21902282000



H. A. Sime and Associates
P. O. Box 705, Tomah, WI
Phone: (608)-372-5392

I, Bryan H. Meyer, do hereby certify that on the 29th day of December, 1989, I found (evidence) ~~of the~~ of the West 1/4 corner of Section 27, T 19 N, R 2 W Fourth Principal Meridian, and I re-established said corner according to the Wisconsin Statutes as shown and described hereon.

Dated this 2nd day of Jan., 1990.

Bryan H. Meyer

Deputy County Surveyor

History of corner establishment since Original Government Survey

Fred Holden was here in November of 1906. A crew from Camp (Fort) McCoy did some surveying for the McCoy boundary in the mid 1940s and in their notes call for an iron pipe at the corner.

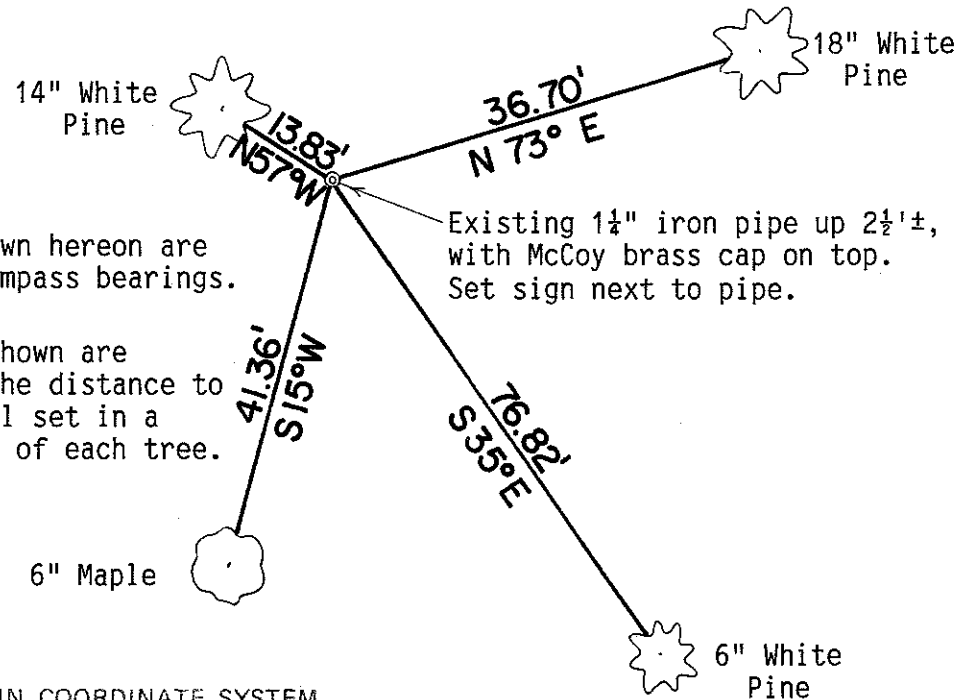
Description of corner evidence found:

I found a 1 1/4" iron pipe up 2 1/2'± and accepted it as the corner.

Description of corner and witness monuments, references and accessories used to perpetuate the original or re-established location of this corner:

Crew: Kenworthy, Forsythe
Date: December 29, 1989
Weather: Cloudy, Drizzle, 26°±
Witnesses to corner location:

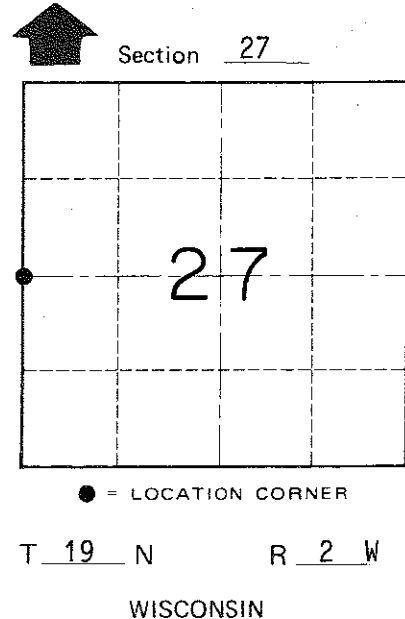
John Kenworthy
Brian Forsythe
Bryan H. Meyer



The bearings shown hereon are magnetic hand compass bearings.

The four trees shown are double blazed; the distance to each is to a nail set in a hack in the side of each tree.

Existing 1 1/4" iron pipe up 2 1/2'±, with McCoy brass cap on top. Set sign next to pipe.



COUNTY SURVEYOR FORM NO. 1

SURVEY CONTROL ORDER

Horizontal _____
Vertical _____

WISCONSIN COORDINATE SYSTEM

Corner	East (X)	North (Y)	Elevation (Z)	Zone
Control Sta. Name				

~~City/Village of~~ Town of Grant
County of Monroe