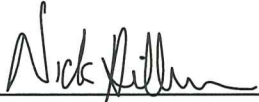


CERTIFICATE

I, Nicholas M. Hillmer, do hereby certify that this document and the data contained herein was prepared by me or under my direct supervision and that I am a duly Licensed Land Surveyor under the laws of the State of Wisconsin.

Dated this 21st day of May, 2013



Nicholas M. Hillmer, P.L.S. 2909
Anderson Engineering of Minnesota, LLC.

CERTIFIED LAND CORNER

History of corner established since Original Government Survey

Fred Holden was here in August of 1911 and found the original bearing trees. Holden also marked a new tree. In November of 1985 Gary Dechant could not find any trace of the bearing trees. Dechant set a Harrison monument by projecting the line between the northwest corner of Section 33 and an east-west fence at the northwest corner of the Northeast Quarter of the Northwest Quarter of Section 33 where it intersects the north-south fence along the north-south quarter line of Section 33. Dechant states the corner location fits Holden's recorded distances within the section extremely well.

Description of evidence found

On December 5th, 2012, Anderson Engineering of Minnesota located the Harrison monument flush with the ground and 0.7 feet east of a metal "T" post with a blank wooden sign. An old barbed wire fence running north-south was found 2.3 feet east of the monument.

No. 21902280020



Description of corner and witness monuments, references and accessories used to perpetuate the original or re-established location of this corner:

Witnesses to corner location:

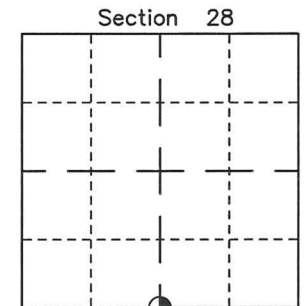
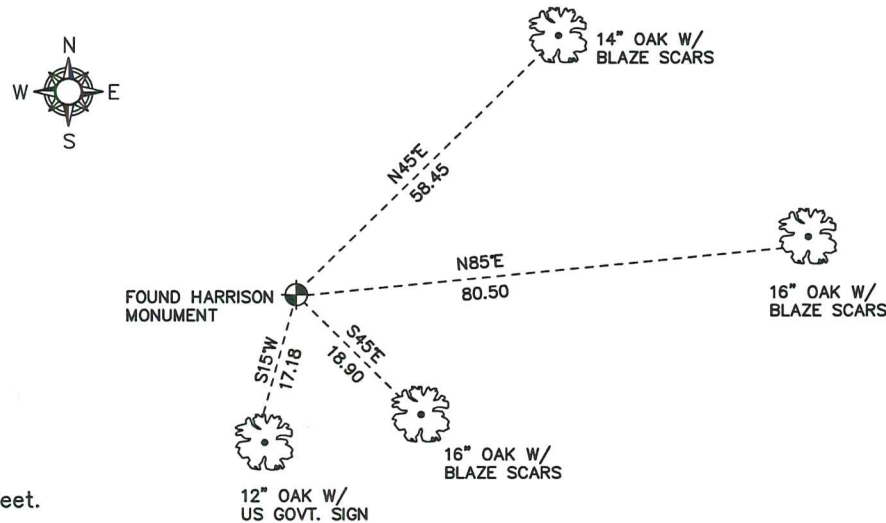
Nick Hillmer
Josh Oslund
Dan Greenwald

MONROE COUNTY
COORDINATE SYSTEM
NAD 1983 (2007)

HARRISON MONUMENT
Northing (Y) 431626.08
Easting (X) 675748.83

Base Station - 22 182W
Northing (Y) 408053.25
Easting (X) 679287.00

All distances are shown in U.S. Survey Feet.
Ties are to 60D nails set in trees.
Bearings are for tie reference purposes only.
Coordinates were derived from RTK GNSS procedures.



⊕ = LOCATION CORNER
Corner I.D. S 1/4 28
T 19 N R 2 W
Town of Grant
Monroe County, WI.

21902280020

I, Gary L. Dechant, do hereby certify that on the 21st day of November 1985, I found (evidence) (~~no evidence~~) of the N $\frac{1}{4}$ corner of Section 33, T19 N, R 2 W Fourth Principal Meridian, and I re-established said corner according to the Wisconsin Statutes as shown and described hereon.

Dated this 25th day of Nov. 1985.

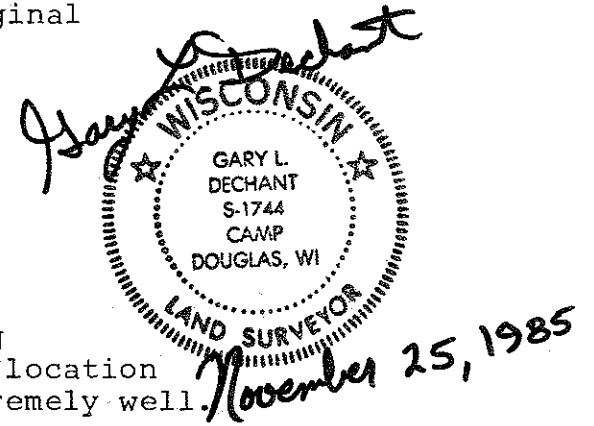
Gary L. Dechant
Registered Land Surveyor-1744
Title

History of corner establishment since Original Government Survey

Fred Holden was here in August of 1911 and found the original bearing trees. He also marked a new tree.

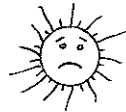
Description of corner evidence found:

Could not find any trace of bearing trees for the corner of the Original Gov't survey or of Holden's. Set corner by projecting the line between the NW section corner and the east-west fence at the NW corner NE $\frac{1}{4}$ -NW $\frac{1}{4}$ where it intersected the North-South fence along the North-South quarter line of Section 33. This corner location fits Holden's recorded distances within the section extremely well.



Description of corner and witness monuments, references and accessories used to perpetuate the original or re-established location of this corner:

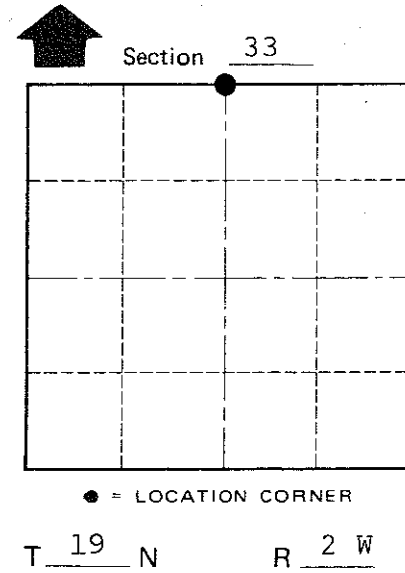
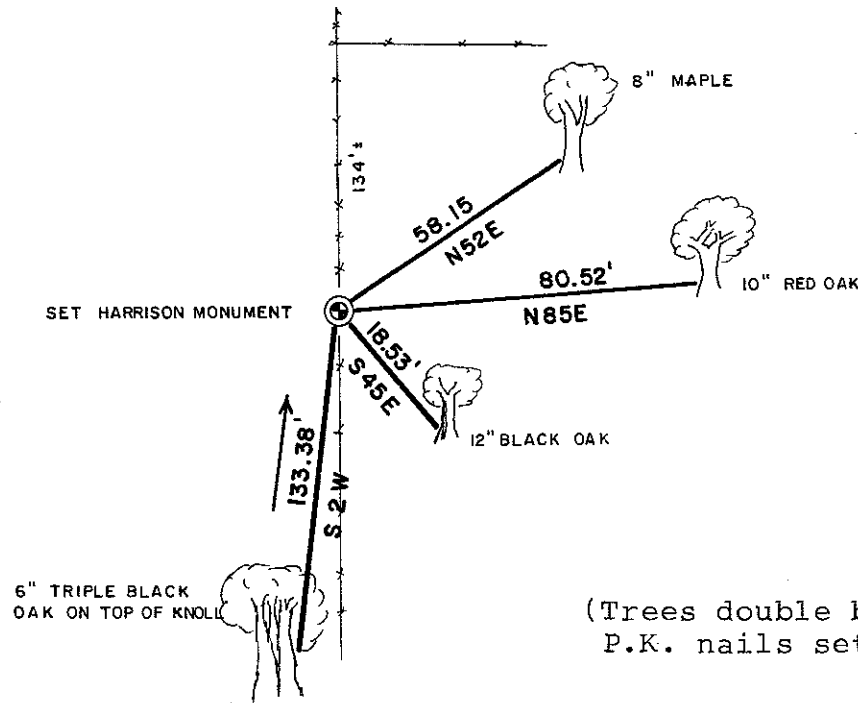
Slight snow cover
4:00 P.M.
15°



Witnesses to corner location:

Lawrence A. Feddersen S-1226

Gary L. Dechant



SURVEY CONTROL ORDER

Horizontal _____
Vertical _____

WISCONSIN COORDINATE SYSTEM

Corner	East (X)	North (Y)	Elevation (Z)	Zone
Control Sta. Name				

(Trees double blazed, scribed, and with P.K. nails set)

~~City, Village or~~ Town Grant
County of Monroe

COUNTY SURVEYOR FORM NO. 1