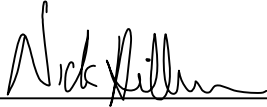


CERTIFICATE

I, Nicholas M. Hillmer, do hereby certify that this document and the data contained herein was prepared by me or under my direct supervision and that I am a duly Licensed Land Surveyor under the laws of the State of Wisconsin.

Dated this 23rd day of May, 2013



Nicholas M. Hillmer, P.L.S. 2909
Anderson Engineering of Minnesota, LLC.

CERTIFIED LAND CORNER

History of corner established since Original Government Survey

Fred A. Holden was at this corner in November of 1906. In 1978 William Jung found a 3/4 inch iron bar used in previous surveys. Jung replaced the iron bar with a Harrison monument.

No. 21902280000

Description of evidence found

On January 24th, 2013, Anderson Engineering of Minnesota located the Harrison monument 0.3 feet above grade and 0.5 feet south of a witness post with a survey marker sign.

Description of corner and witness monuments, references and accessories used to perpetuate the original or re-established location of this corner:

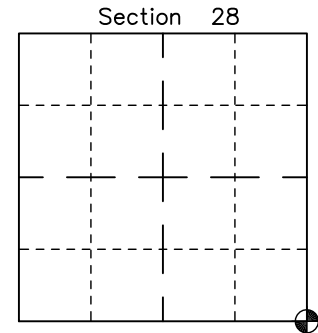
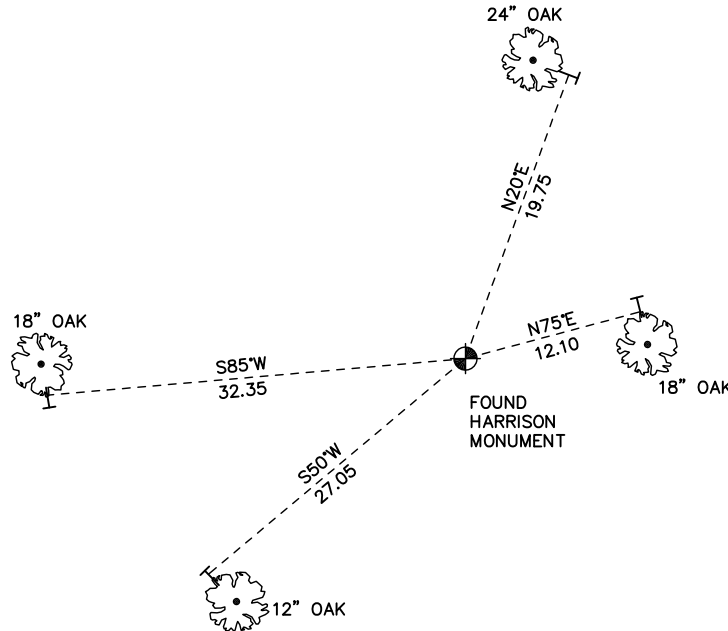
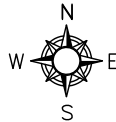
Witnesses to corner location:

Nick Hillmer
Josh Oslund
Dan Greenwald

MONROE COUNTY
COORDINATE SYSTEM
NAD 1983 (2007)

HARRISON MONUMENT
Northing (Y) 431697.80
Easting (X) 678437.08

Base Station - 22 182W
Northing (Y) 408053.25
Easting (X) 679287.00



⊙ = LOCATION CORNER
Corner I.D. SE 28
T 19 N R 2 W
Town of Grant
Monroe County, WI.

All distances are shown in U.S. Survey Feet.
Ties are to 60D nails set in trees.
Bearings are for tie reference purposes only.
Coordinates were derived from RTK GNSS procedures.

CERTIFICATE

CERTIFIED LAND CORNER

No. 107

21902280000

I, William C. Jung, do hereby certify that on the 31st day of March 1978, I found (evidence) (no evidence) of the SW corner of Section 27, T 19 N, R 2 W Fourth Principal Meridian, and I re-established said corner according to the Wisconsin Statutes as shown and described hereon.

Dated this 2nd day of May 1978.

William C. Jung, R.L.S. 1323

Crew Chief, County Surveyor's Office

History of original corner establishment:

Fred Holden was at this corner in November of 1906.

Description of corner evidence found:

Found a 3/4" iron bar used in previous surveys. Replaced the bar with a Harrison Marker. The occupied fence corner was accepted as the best available evidence.

Description of corner and witness monuments, references and accessories used to perpetuate the original or re-established location of this corner:

Witnesses to corner location:

W. Jung

G. Dechant



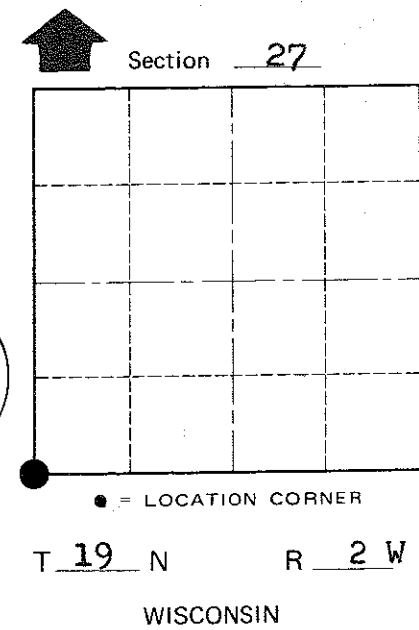
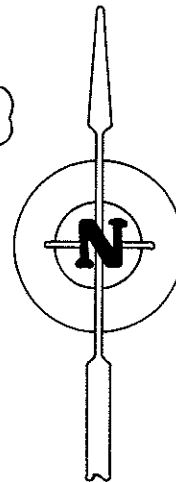
36" double White Pine

Replaced 3/4" iron bar with Harrison, 2' west of brace post.

14" White Pine

double swamp Maple

(All trees double blazed with nail&caps set)



Approved by: Harley A. Sime, County Surveyor

SURVEY CONTROL ORDER

Horizontal _____
Vertical _____

WISCONSIN COORDINATE SYSTEM

Table with columns: Corner, East (X), North (Y), Elevation (Z), Zone. Row 1: Control Sta. Name, [blank], [blank], [blank], [blank]

City, Village or Town Grant
County of Monroe

COUNTY SURVEYOR FORM NO. 1