

106

**U.S. PUBLIC LAND CORNER
MAINTENANCE**


Corner ID: S1/4 Sec.27, T19N-R2W
21902270020

DATE	CREW	MONUMENT TYPE -----
May 6, 2015	Zachariah P. Dechant Gary L. Dechant	Harrison intact, down 12" in centerline Charcoal Ave NOTE: Also a bent 3/4" iron bar 3' SE In line with fences north and south.

References:

	<u>Bearing</u>	<u>Distance</u>
1) Set 3/4"x24" round iron bar, down 12" in field	N17E	44.10'
2) Set 3/4"x24" round iron bar, down 12" in field	S30E	79.42'
3) Set 3/4"x24" round iron bar, down 12" in field	S17W	58.74'
4) Set 3/4"x24" round iron bar, down 12" in field	N30W	50.63'

Harrison & reference markers set on straight lines.

Gary L. Dechant

October 29, 2015

I, Ronald D Parish, do hereby certify that on the 8th day of September 1981, I found (evidence) (no evidence) of the N¹/₄ corner of Section 34, T19 N, R 2 W Fourth Principal Meridian, and I re-established said corner according to the Wisconsin Statutes as shown and described hereon.

Dated this 14th day of Sept 1981.
Ronald D Parish, R.L.S. 1460

History of corner establishment since Original Government Survey
Fred Holden calls for the original corner in his notes of August & September of 1911

**See Reverse Side
For Maintenance**

Description of corner evidence found:
Found no evidence of the original corner, set corner on line between the NW corner and the NE corner at equi distance. This fits the centerline of Auburn Drive and the existing fencelines

Approved: **HARLEY A. SIME**
MONROE CO, SURVEYOR

Title

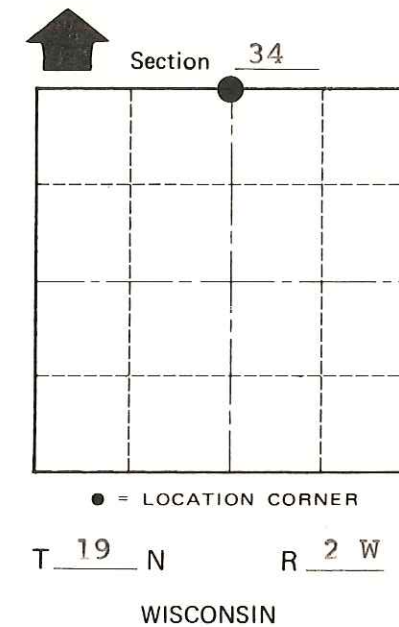
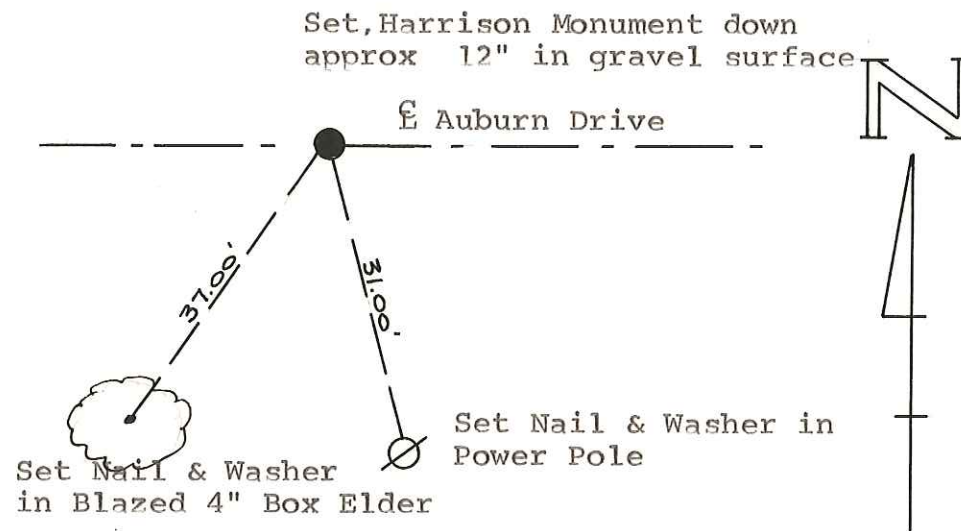
COUNTY SURVEYOR FORM NO. 1

Description of corner and witness monuments, references and accessories used to perpetuate the original or re-established location of this corner:

Witnesses to corner location:

Ronald D Parish

Todd J Schmitz



SURVEY CONTROL ORDER

Horizontal	_____
Vertical	_____

WISCONSIN COORDINATE SYSTEM

Corner	East (X)	North (Y)	Elevation (Z)	Zone
Control Sta. Name				

City, Village or Town Grant
County of Monroe