


**U.S. PUBLIC LAND CORNER
MAINTENANCE**

99

Corner ID: W1/4 Sec. 25, T19N-R2W
21902262000

<u>DATE</u>	<u>CREW</u>	<u>MONUMENT INFO</u>
March 20, 2020	Zachariah P. Dechant Gary L. Dechant	Existing Harrison, intact, 13' east of center of Cheyenne Road down 6", 155' north of center of driveway 5606 Cheyenne

	<u>Compass Bearing</u>	<u>Distance</u>
1) Set 3/4"x24' round iron bar, down 6", 4' NW of 6" Cedar	S75E	35.64'
2) Set 3/4"x24" round iron bar, down 6", 4' NW of 14" Red Oak	S36E	58.52'
3) Set 3/4" round iron bar, down 6", 4' east of r/w fence	S73W	35.85'
4) Set 3/4"x24" round iron bar, down 6" 5' east of r/w fence	N63W	41.47'

Gary L. Dechant

March 24, 2020

I, Harley A. Sime, do hereby certify that on the 26 day of July 19 76, I found (evidence) ~~(no evidence)~~ of the W/4 corner of Section 25, T 19 N, R 2 W, Fourth Principal Meridian, and I re-established said corner according to the Wisconsin Statutes as shown and described hereon.

Dated this 11 day of August 19 77.

History of original corner establishment:

See Reverse Side For Maintenance

Description of corner evidence found:

Projected the West line of Marten's C.S.M. North and at a distance so as to best fit the occupied evidence along the West line of Section 25.

County Surveyor _____
Title

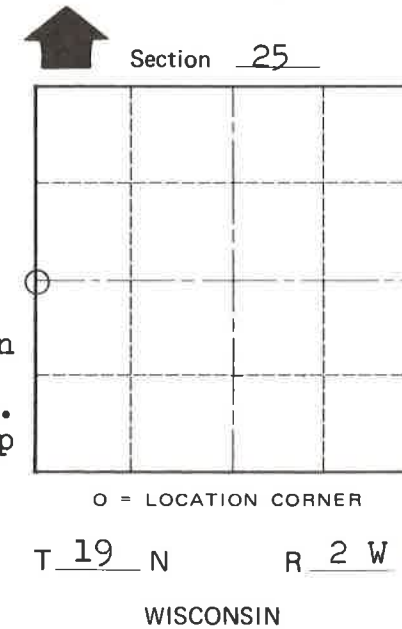
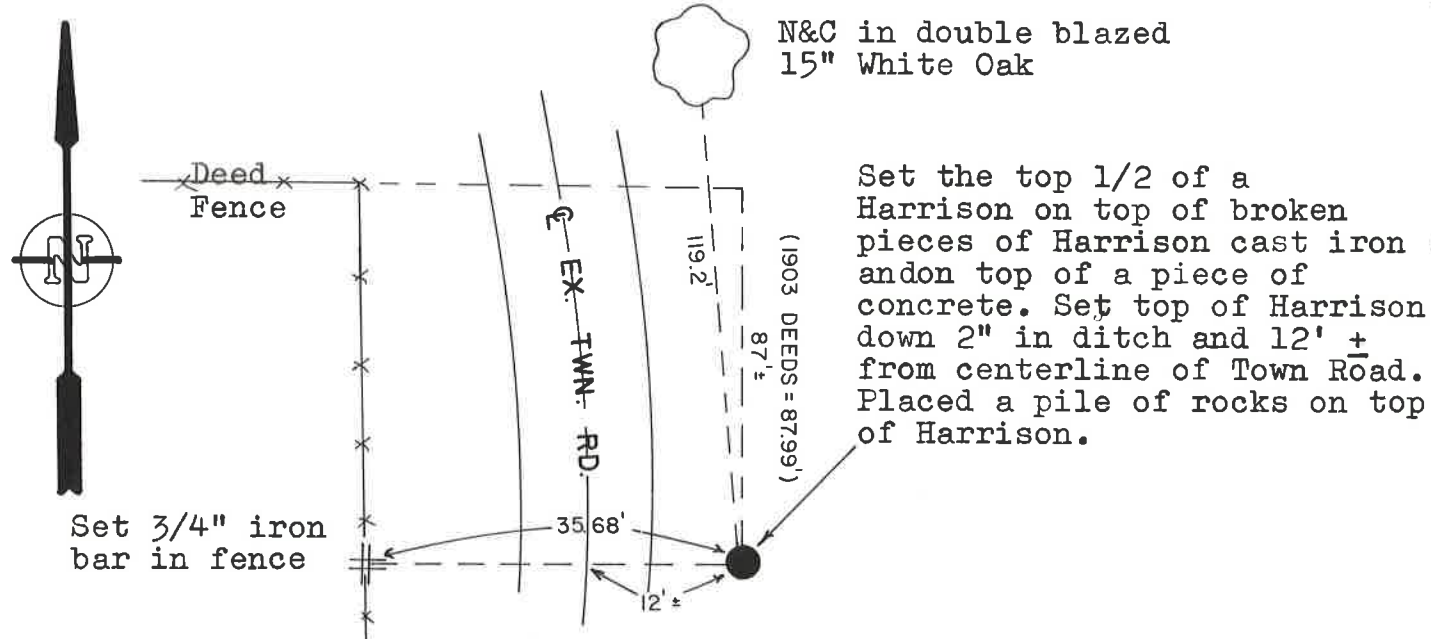
Approved: HARLEY A. SIME
MONROE CO. SURVEYOR

Description of corner and witness monuments, references and accessories used to perpetuate the original or re-established location of this corner:

Witnesses to corner location:

W. Jung - Crew Chief

G. Dechant



COUNTY SURVEYOR FORM NO. 1

SURVEY CONTROL ORDER

Horizontal	_____
Vertical	_____

WISCONSIN COORDINATE SYSTEM

Corner	East (X)	North (Y)	Elevation (Z)	Zone
Control Sta. Name				

City, Village or Town Grant

County of Monroe

I, Harley A. Sime, do hereby certify that on the 26 day of July 19 76, I found (evidence) (~~no evidence~~) of the W/4 corner of Section 25, T 19 N, R 2 W, Fourth Principal Meridian, and I re-established said corner according to the Wisconsin Statutes as shown and described hereon.

Dated this 11 day of August 19 77.

County Surveyor
Title

History of original corner establishment:

**See Reverse Side
For Maintenance**

Description of corner evidence found:

Projected the West line of Marten's C.S.M. North and at a distance so as to best fit the occupied evidence along the West line of Section 25.

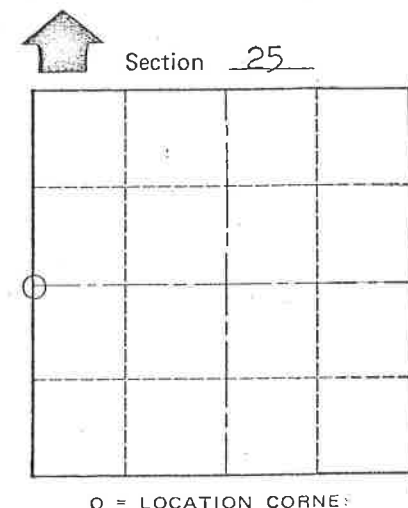
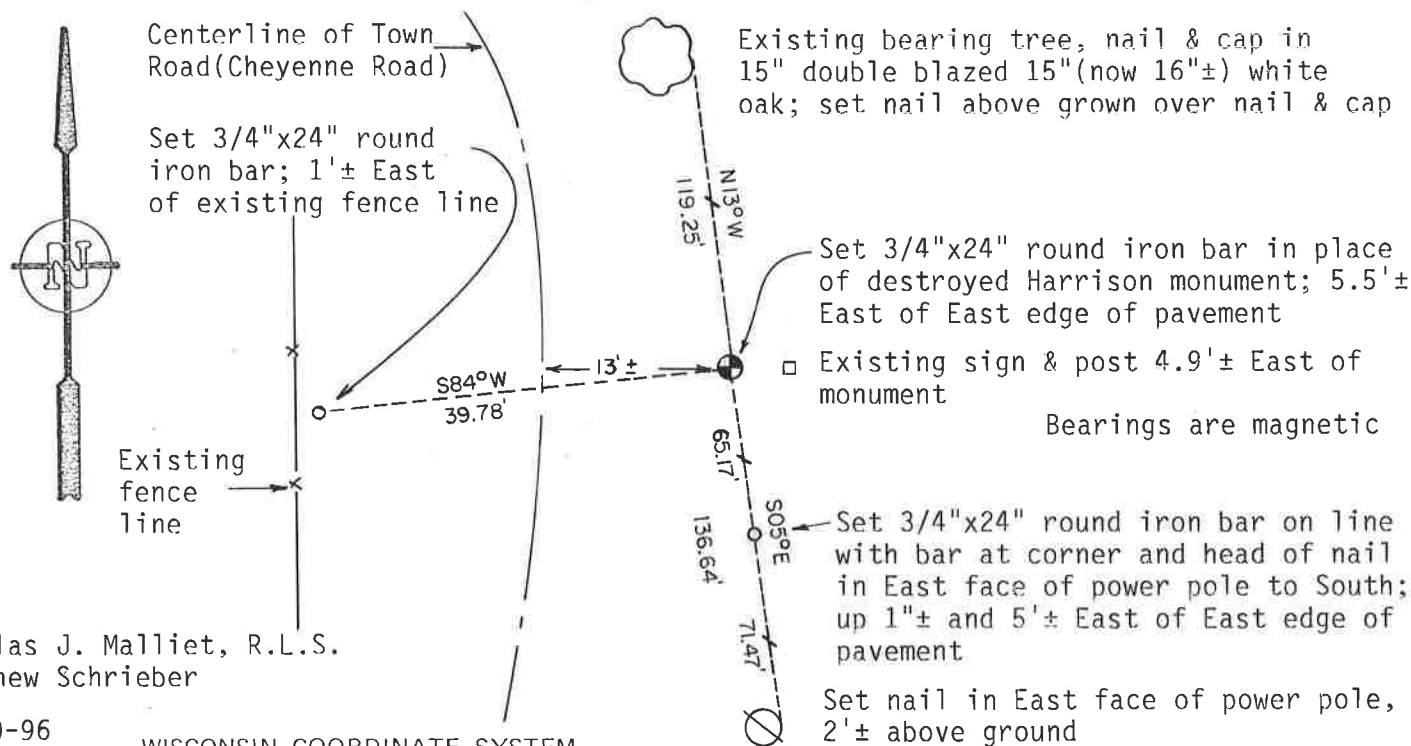
UPDATE: Found the monument destroyed at this corner location. Reset a new monument at this corner by retracing W.C. Jung's survey by which he established this corner.

Douglas J. Malliet, R.L.S. #1266
30 October 1996

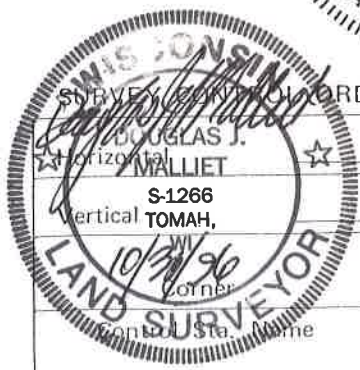
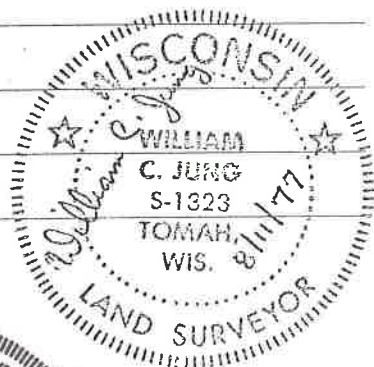
Description of corner and witness monuments, references and accessories used to perpetuate the original or re-established location of this corner:

Witnesses to corner location:

W. Jung - Crew Chief
G. Dechant



T 19 N R 2 W
WISCONSIN



CREW: Douglas J. Malliet, R.L.S.
Matthew Schrieber
10-30-96

WISCONSIN COORDINATE SYSTEM

East (X)	North (Y)	Elevation (Z)	Zone

City, Village or Town Grant
County of Monroe

COUNTY SURVEYOR FORM NO. 1