

104

**U.S. PUBLIC LAND CORNER
MAINTENANCE**

**Corner ID : S1/4 Sec.26, T19N-R2W
21902260020**

<u>DATE</u>	<u>CREW</u>	<u>MONUMENT TYPE -----</u>
April 8, 2015	Zachariah P. Dechant Gary L. Dechant	Existing Harrison facing east. Intact at down four way fence corner. Set stones around corner and sign 1' east

References:

	<u>Bearing</u>	<u>Distance</u>
1) Set 3/4"x24" round iron bar, down 6", 3' SE of 14" Maple	N39E	16.88'
2) Set 3/4"x24" round iron bar, down 6", 3' south 14" Maple	S71E	26.90'
3) Set 3/4"x24" round iron bar, down 6", 3' SE 14" Poplar	S54W	17.38'
4) Set 3/4"x24" iron bar, down 6"	N41W	25.20'



I, Ronald D Parish, do hereby certify that on the 28th day of August 1981, I found (evidence) (no evidence) of the N $\frac{1}{2}$ corner of Section 35, T19 N, R 2 W Fourth Principal Meridian, and I re-established said corner according to the Wisconsin Statutes as shown and described hereon.

Dated this 14th day of Sept 1981.
Ronald D P^Arish, R.L.S. 1460

Title

History of corner establishment since Original Government Survey

No subsequent history of monument perpetuation since the original U S Government Survey

Description of corner evidence found:

The fence corner of an old fence (North-South & West) fit the recorded distance from the NE corner of 35 reasonably well so set corner at this point

See Reverse Side For Maintenance

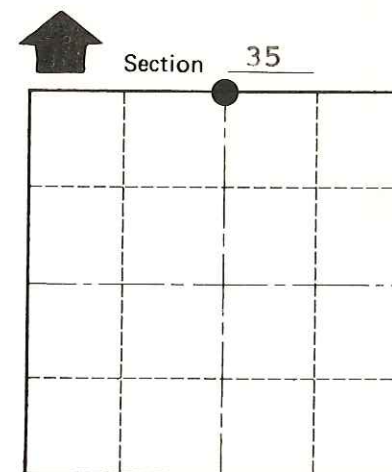
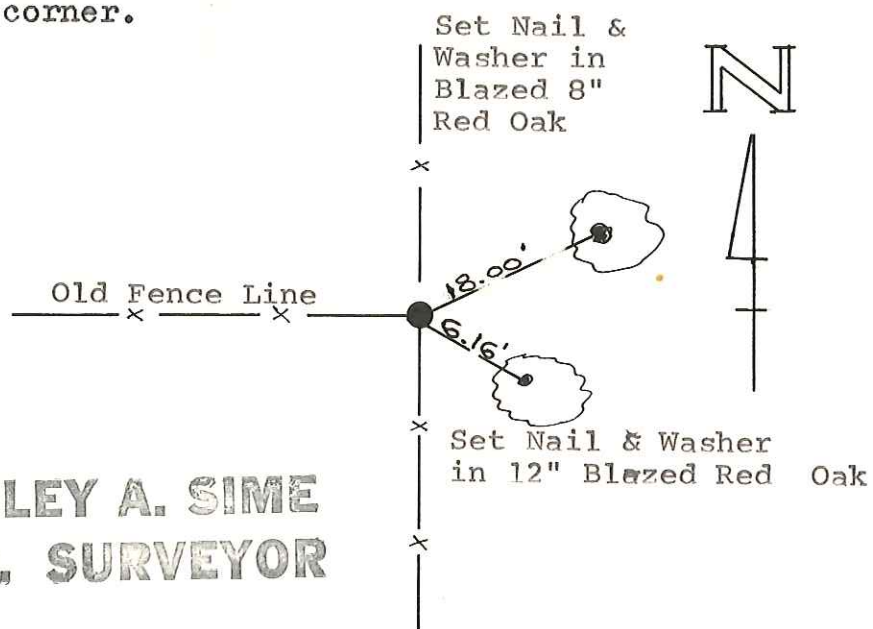
COUNTY SURVEYOR FORM NO. 1

Description of corner and witness monuments, references and accessories used to perpetuate the original or re-established location of this corner:

Set Harrison marker at the corner.

Witnesses to corner location:

Ronald D Parish
Todd J Schmitz



● = LOCATION CORNER
T 19 N R 2 W
WISCONSIN

Approved: **HARLEY A. SIME**
MONROE CO., SURVEYOR

SURVEY CONTROL ORDER

Horizontal	_____
Vertical	_____

WISCONSIN COORDINATE SYSTEM

Corner	East (X)	North (Y)	Elevation (Z)	Zone
Control Sta. Name				

City, Village or Town Grant
County of Monroe