

102

**U.S. PUBLIC LAND CORNER
MAINTENANCE**

Corner ID : S1/4 Sec. 25 T19N-R2W

21902250020

<u>DATE</u>	<u>CREW</u>	<u>MONUMENT TYPE</u> -----
November 16, 2016	Zachariah P.Dechant Gary L. Dechant	Existing Harrison, top broke off, down 12". 37' south of Charcoal & Clay Ave intersection Set 1/2"x2" bolt 2' north & 2' east

References:

	<u>Bearing</u>	<u>Distance</u>
1) Set 3/4"x24" round iron bar, down 12" in field	N30E	96.37'
2) Set 3/4"x24 round iron bar, down 6" 4' NW of 5" Red Pine	S44E	84.96'
3) Set 3/4"x24" round iron bar, down 6", in field entrance	S30W	58.26'
4) Set 3/4"x24" hex iron bar, down 6", between ditches	N44W	88.16'

Harrison and reference markers set on straight lines.



November 29, 2016

I, William C. Jung, do hereby certify that on the 14th day of November 1977, I found (evidence) ~~(no evidence)~~ of the S 1/4 corner of Section 25, T 19 N, R 2 W Fourth Principal Meridian, and I re-established said corner according to the Wisconsin Statutes as shown and described hereon.

Dated this 14th day of Nov. 1977.

William C. Jung, R.L.S. 1323

Crew Chief, County Surveyor's Office

History of original corner establishment:

No recorded history since the original government survey.

See Reverse Side For Maintenance

Description of corner evidence found:

There is no survey on record showing that Section 25 was subdivided. However, aerial photos would indicate otherwise. Measured the distance from the occupied C 1/4 Corner to the occupied 1/8 Corner on the N-S 1/4 line to the South. Doubled this distance, and set the corner at this distance on line with the old occupied line fence to the North. This fits the approximate occupied S 1/4 Corner very well.

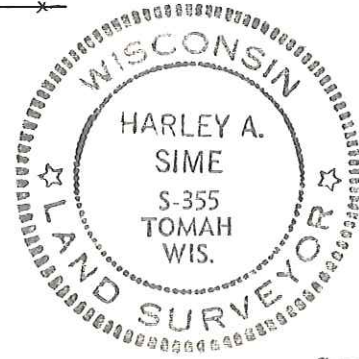
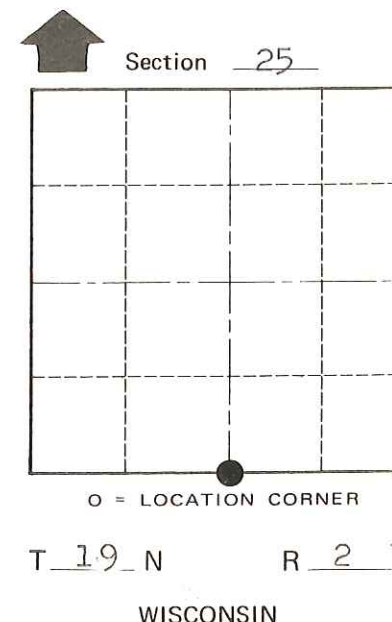
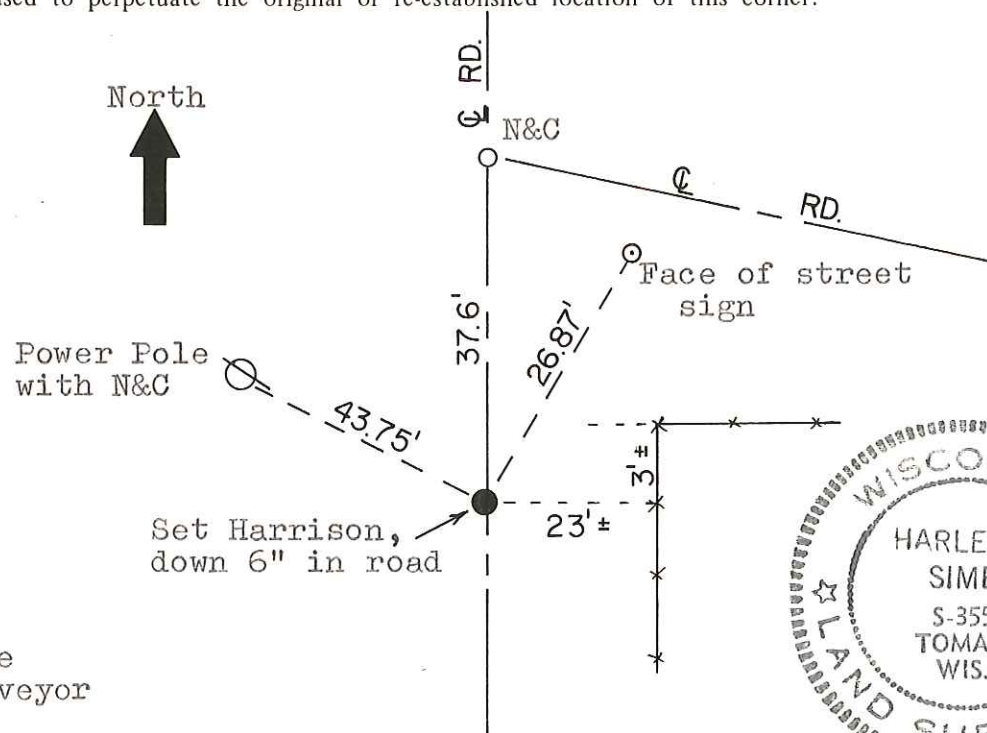
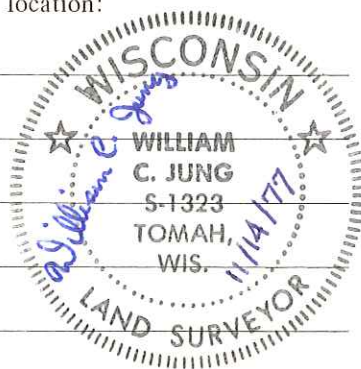
Description of corner and witness monuments, references and accessories used to perpetuate the original or re-established location of this corner:

Set a Harrison marker in the road.

Witnesses to corner location:

W. C. Jung

G. Dechant



Approved: Harley Sime
County Surveyor

SURVEY CONTROL ORDER

Horizontal	_____
Vertical	_____

WISCONSIN COORDINATE SYSTEM

Corner	East (X)	North (Y)	Elevation (Z)	Zone
Control Sta. Name				

City, Village or Town Grant

County of Monroe

COUNTY SURVEYOR FORM NO. 1