

CERTIFICATE

CERTIFIED LAND CORNER

No. 83

21902230000

I, Harley A. Sime, do hereby certify that on the 23 day of July, 1976, I found (evidence) (~~no evidence~~) of the NW corner of Section 25, T 19 N, R 2 W, Fourth Principal Meridian, and I re-established said corner according to the Wisconsin Statutes as shown and described hereon.

History of original corner establishment:

Description of corner evidence found:

Accepted the occupied fence corner as the best evidence. Fits the West line of Section 25 very well, also the distance 1/2 mile North and West.

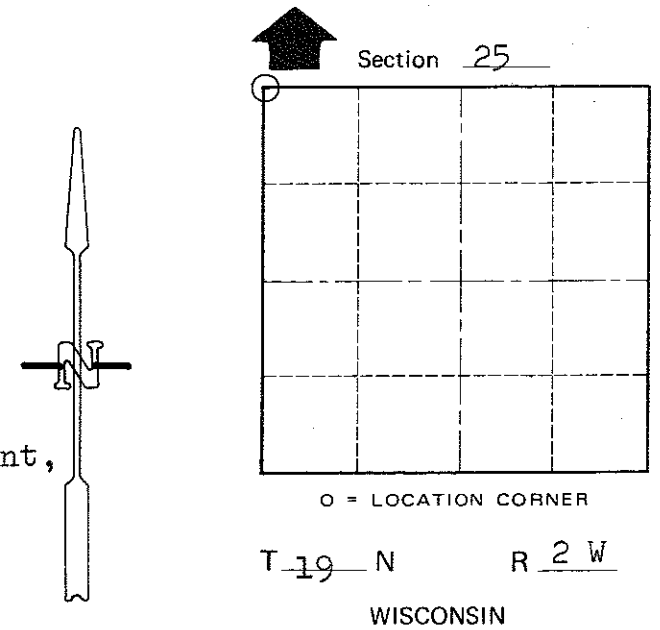
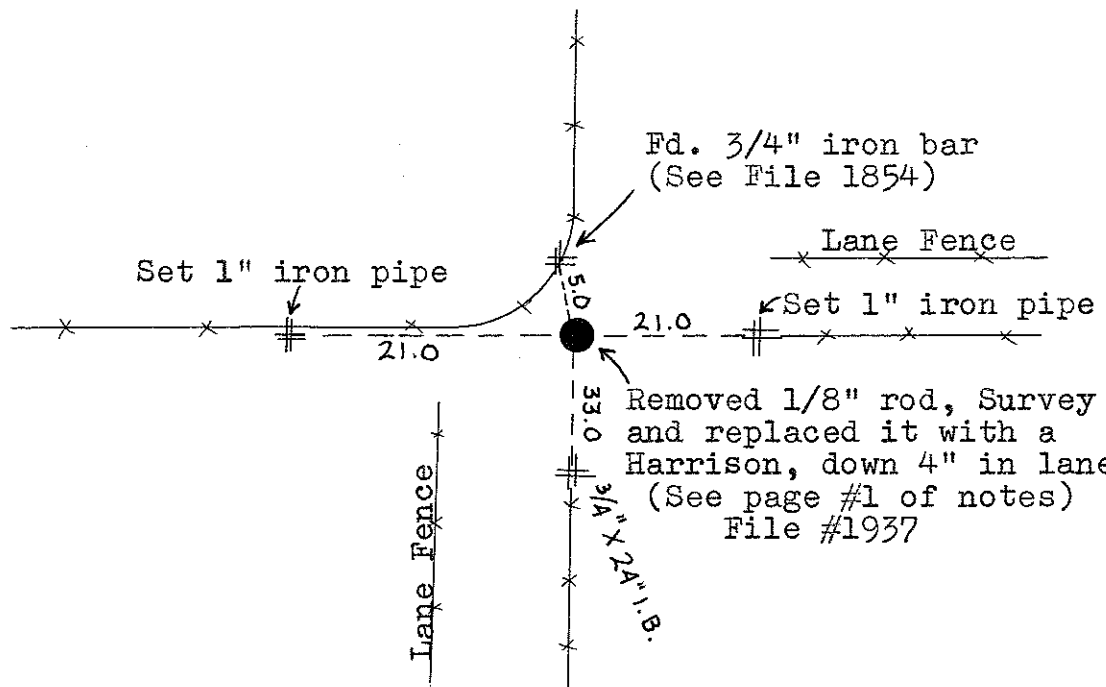
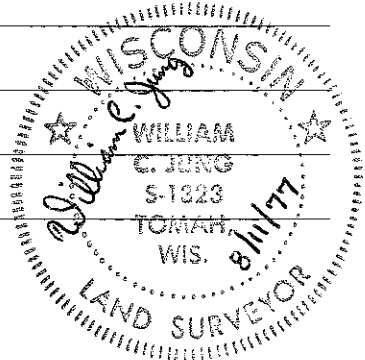
Dated this 11 day of August 1977.

~~County Surveyor~~ **Approved: HARLEY A. SIME**  
**MONROE CO. SURVEYOR**

Description of corner and witness monuments, references and accessories used to perpetuate the original or re-established location of this corner:

Witnesses to corner location:

W. Jung - Crew Chief  
D. Dade  
G. Dechant



COUNTY SURVEYOR FORM NO. 1

SURVEY CONTROL ORDER

Horizontal \_\_\_\_\_  
Vertical \_\_\_\_\_

WISCONSIN COORDINATE SYSTEM

Corner	East (X)	North (Y)	Elevation (Z)	Zone
Control Sta. Name				

City, Village or Town Grant

County of Monroe