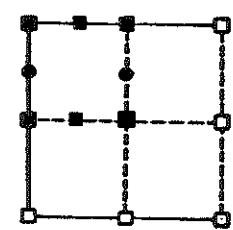


Bearings referenced to the West line of the NW $\frac{1}{4}$ assumed to bear S 1°-07'-48"

CORNERS

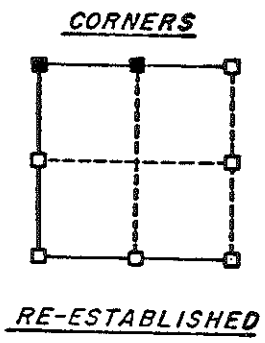
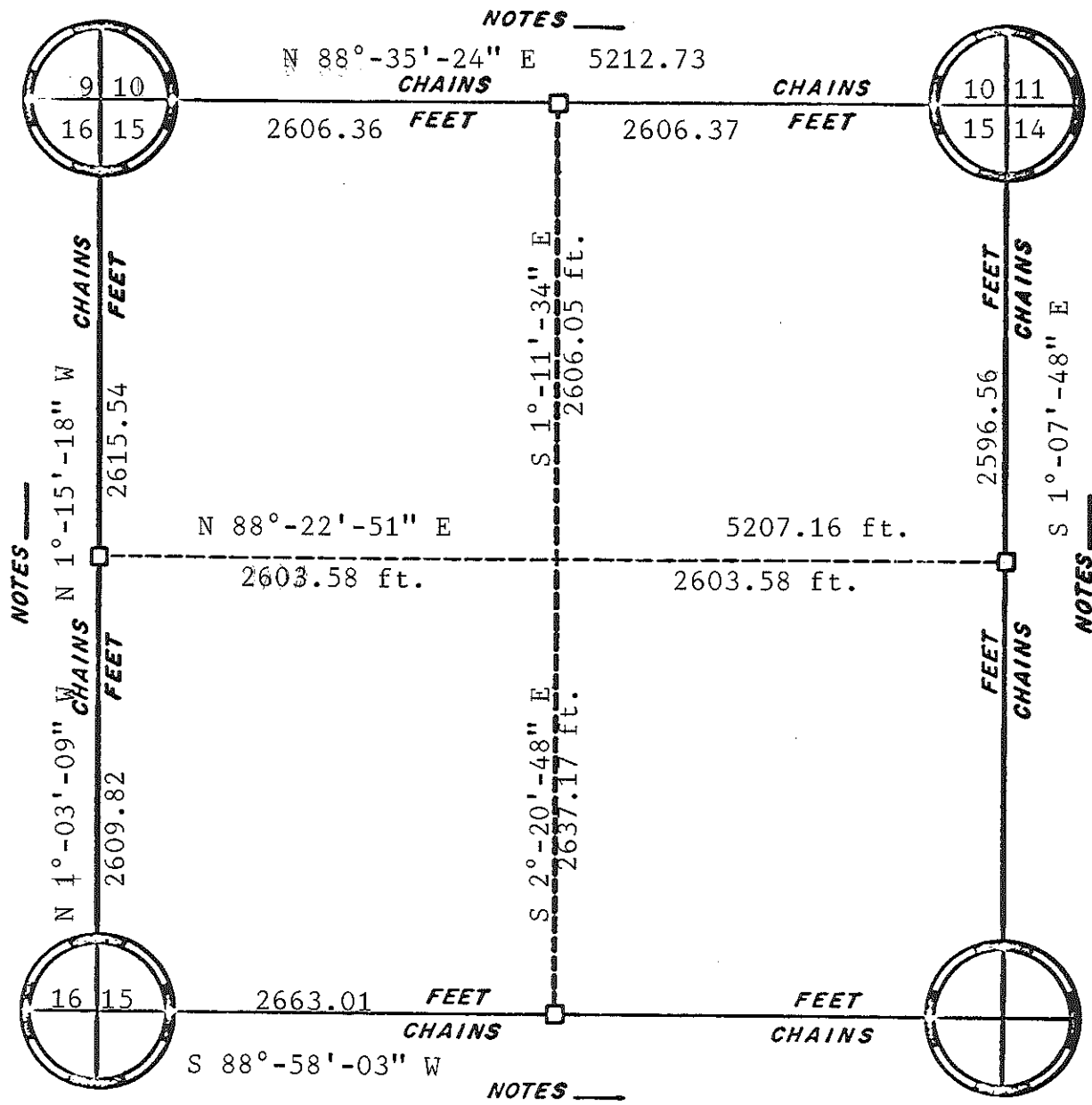


RE-ESTABLISHED

ORIGINAL SURVEY DATA

BY _____
DATE April 3, 1985

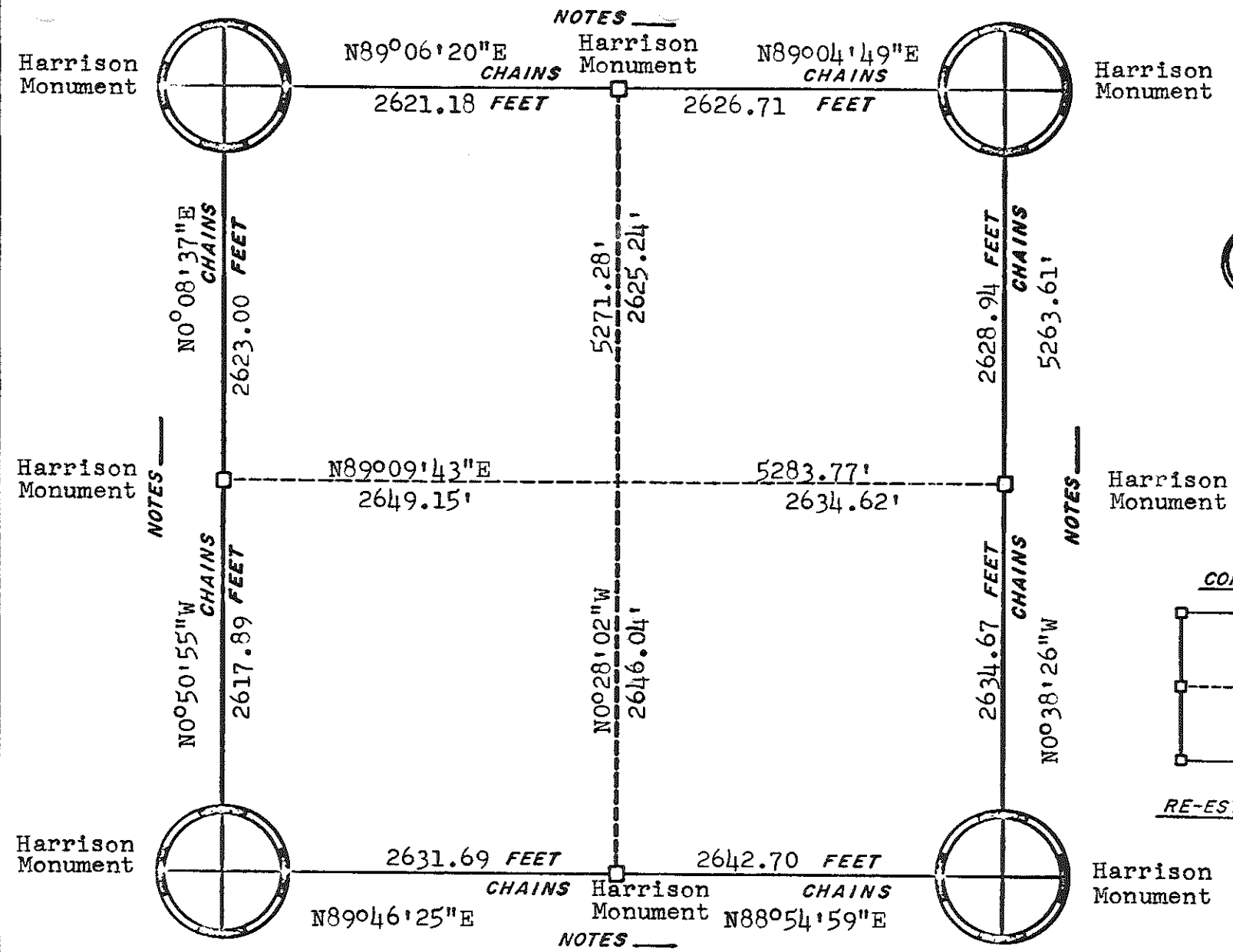
SURVEYED BY Ronald Parish	CONTRACT DATE	COUNTY MONROE	TOWN-VILLAGE-CITY Grant	SECTION 14	TOWNSHIP 19 N.	RANGE 2 W.
------------------------------	---------------	---------------	----------------------------	---------------	-------------------	---------------



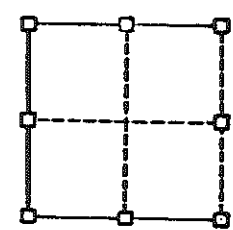
ORIGINAL SURVEY DATA

BY _____
DATE 3/15/05

SURVEYED BY Ronald Parish	CONTRACT DATE	COUNTY MONROE ██████████	TOWN-VILLAGE-CITY Grant	SECTION 15	TOWNSHIP 19 N.	RANGE 2 W.
------------------------------	---------------	-----------------------------	----------------------------	---------------	-------------------	---------------



CORNERS

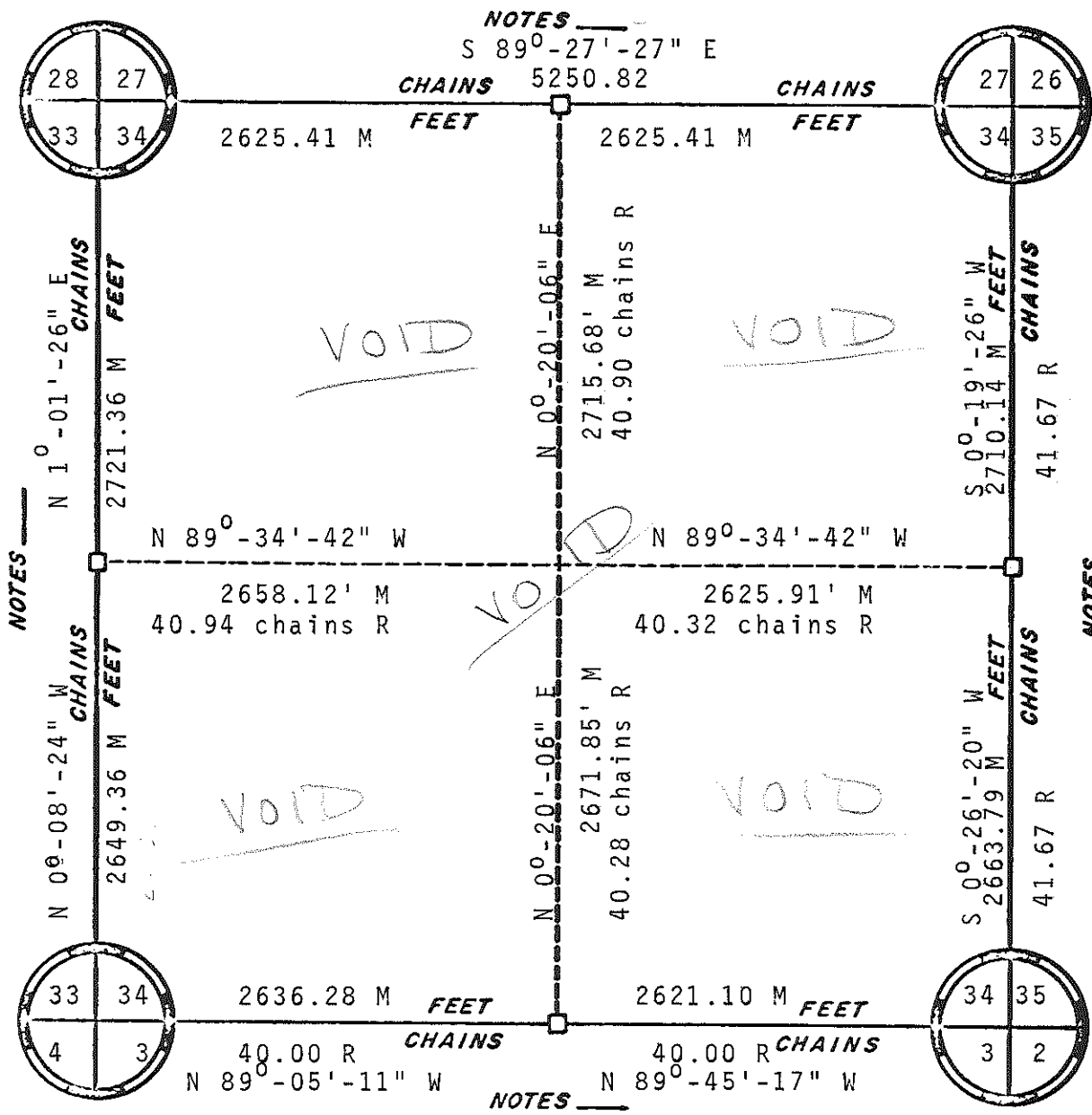


RE-ESTABLISHED

ORIGINAL SURVEY DATA

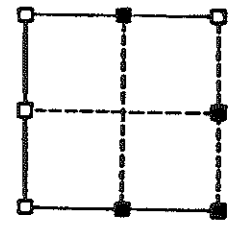
BY _____
DATE 3/7/79

SURVEYED BY	CONTRACT DATE	COUNTY MONROE	TOWN-VILLAGE-CITY	SECTION	TOWNSHIP	RANGE
G. A. Sime	Jan, 1978	██████████	Grant	25	19N	2W



VOID

CORNERS



RE-ESTABLISHED

VOID

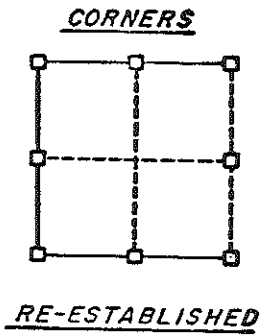
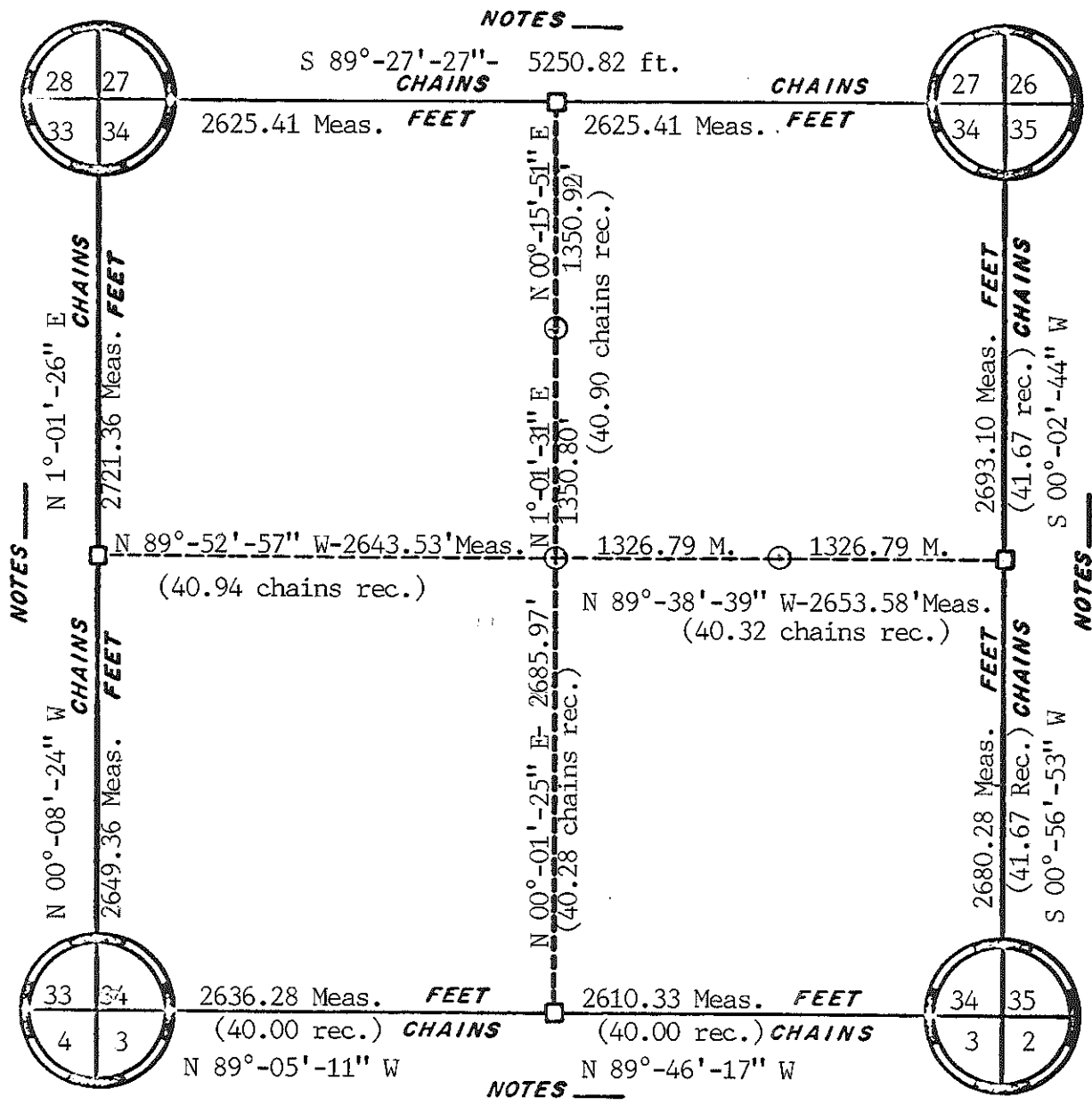
NOTES —

NOTES —

ORIGINAL SURVEY DATA

BY _____
DATE _____

SURVEYED BY Ronald D. Parish	CONTRACT DATE	COUNTY MONROE	TOWN-VILLAGE-CITY Grant	SECTION 34	TOWNSHIP T 19 N	RANGE R 2 W
---------------------------------	---------------	---------------	----------------------------	---------------	--------------------	----------------

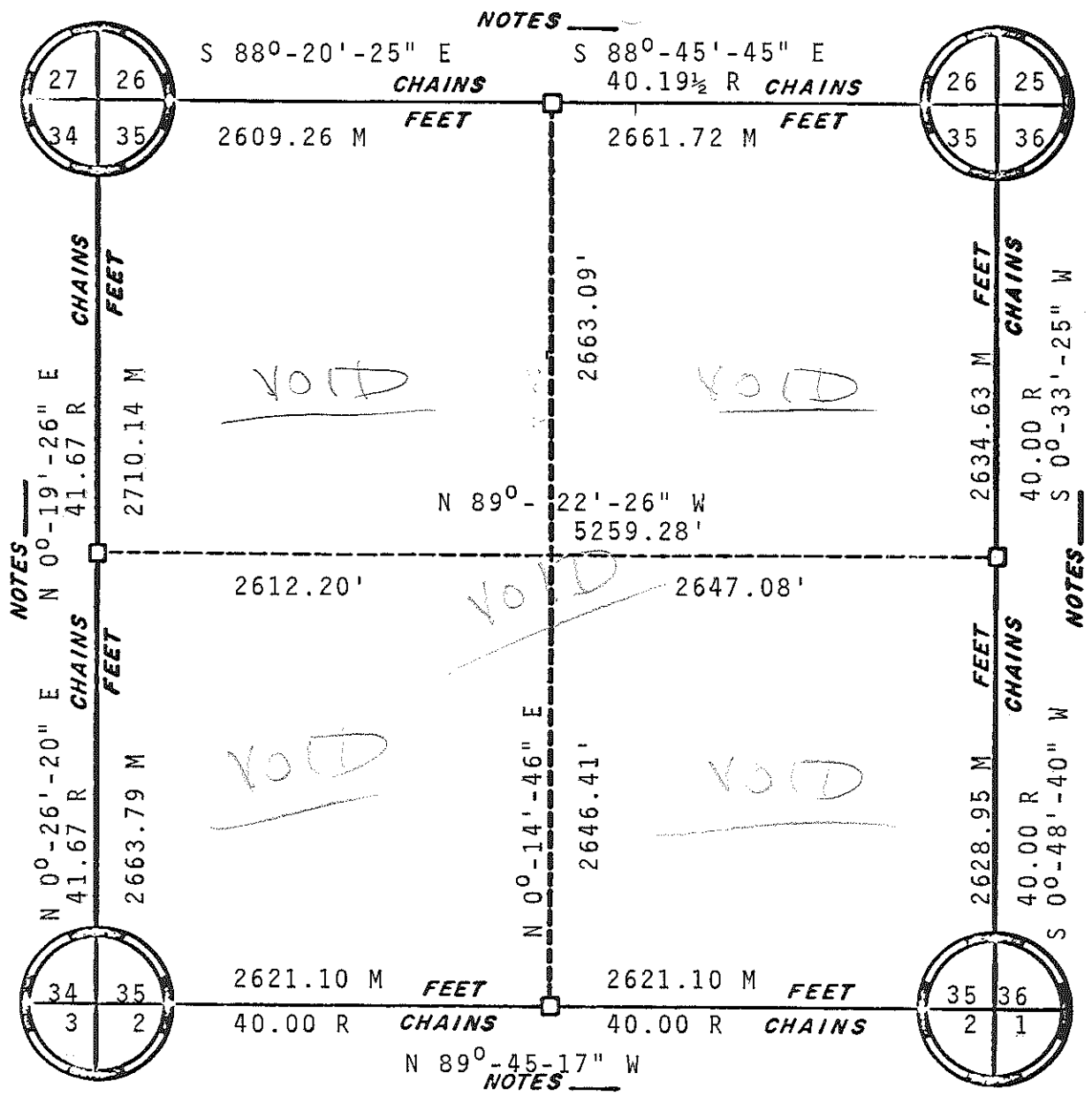


REVISED Nov. 30, 1984

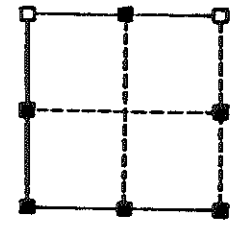
ORIGINAL SURVEY DATA

BY _____
DATE Aug, 1981

SURVEYED BY Ronald Parish	CONTRACT DATE	COUNTY MONROE	TOWN-VILLAGE-CITY Granty	SECTION 34	TOWNSHIP T 19 N	RANGE R 2 W
------------------------------	---------------	---------------	-----------------------------	---------------	--------------------	----------------



CORNERS

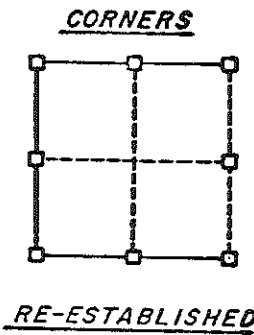
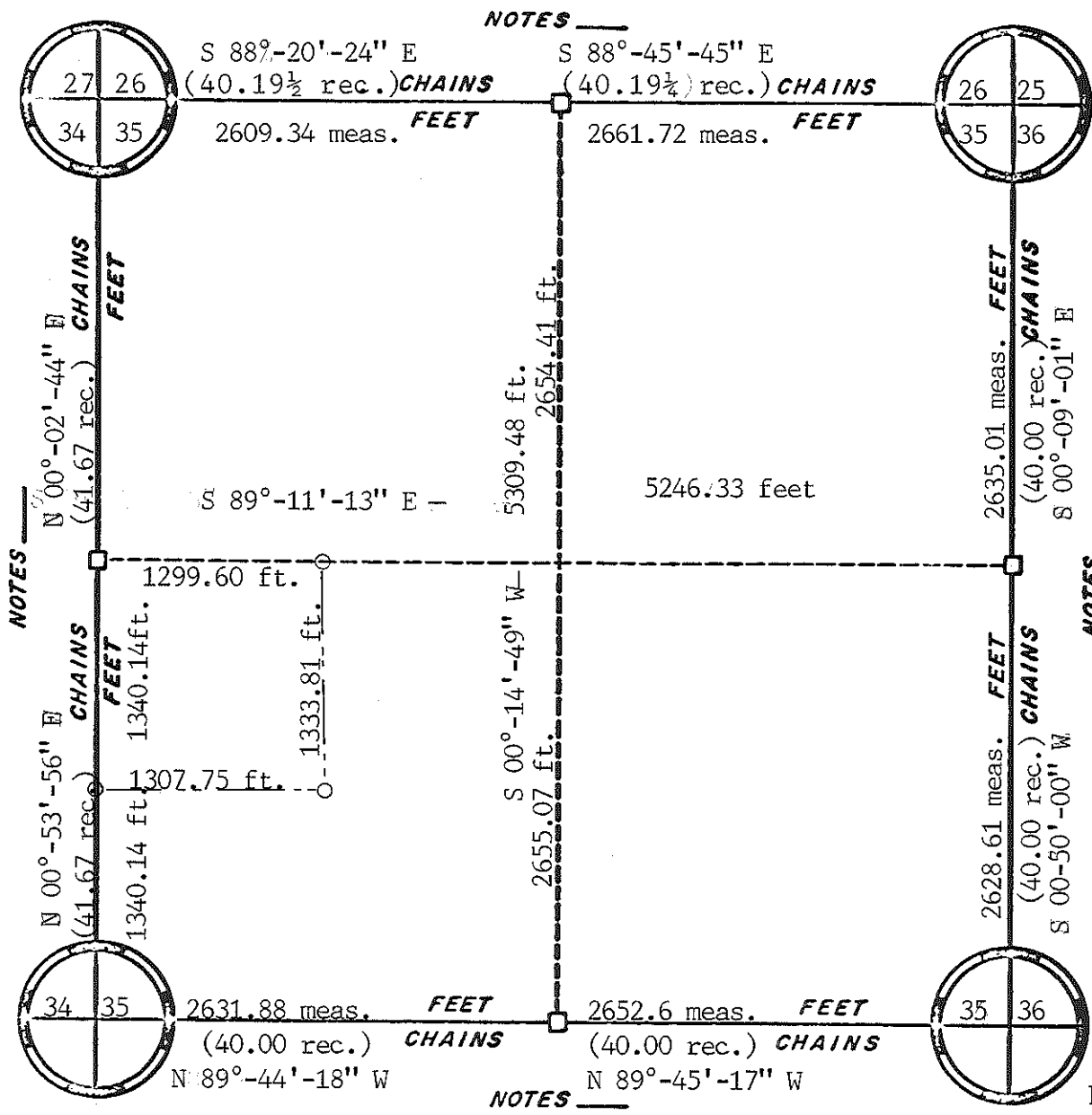


RE-ESTABLISHED

ORIGINAL SURVEY DATA

BY _____
 DATE 9/14/81

SURVEYED BY Ronald D. Parish	CONTRACT DATE	COUNTY MONROE	TOWN-VILLAGE-CITY Grant	SECTION 35	TOWNSHIP T.19 N	RANGE R 2 W
---------------------------------	---------------	---------------	----------------------------	---------------	--------------------	----------------



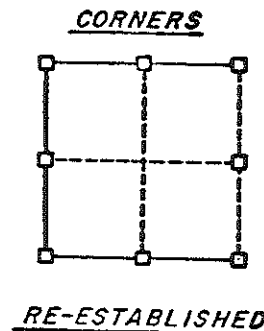
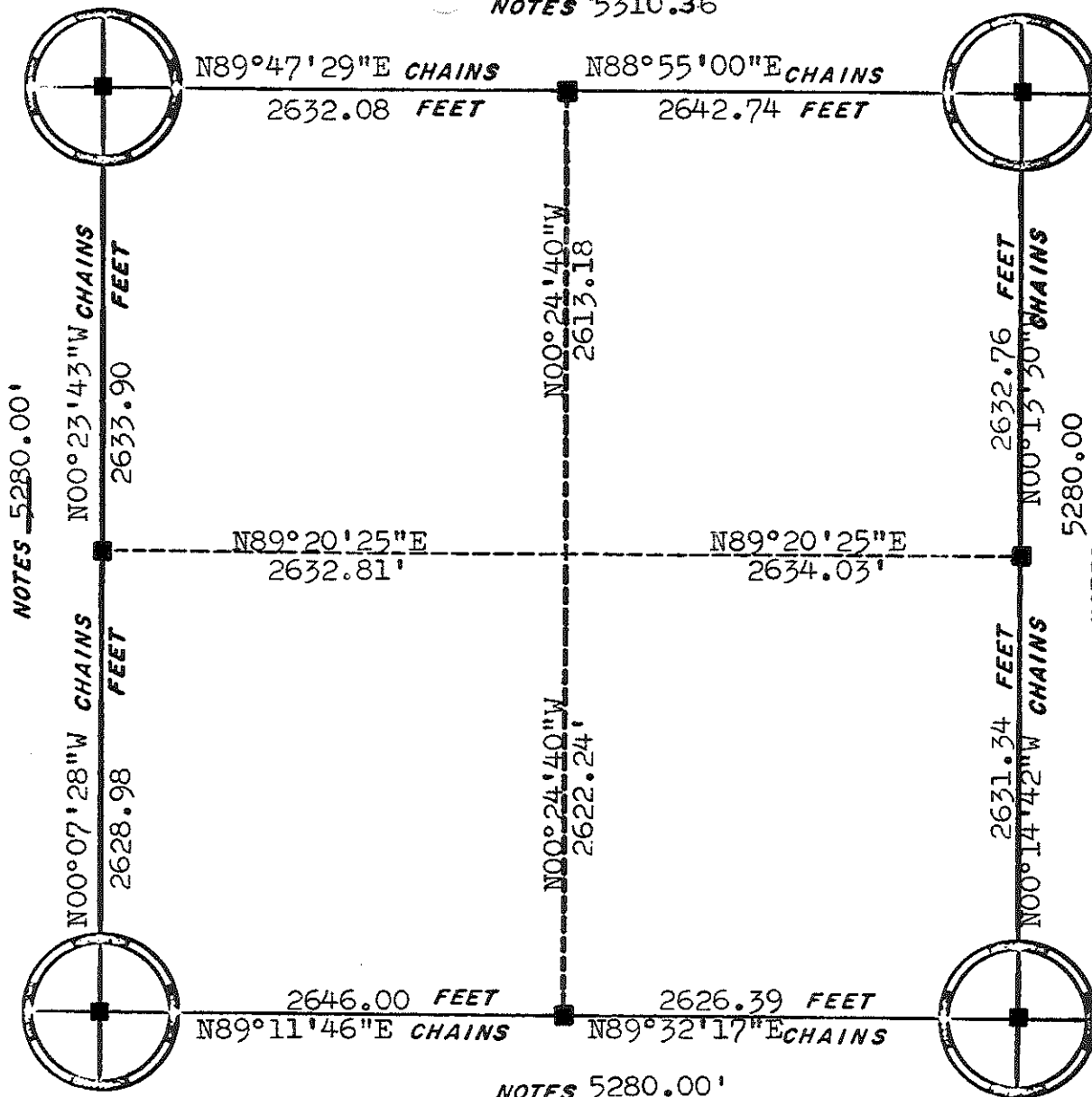
REVISED Dec. 4, 1984

ORIGINAL SURVEY DATA

BY _____
DATE Aug. 1981

SURVEYED BY	CONTRACT DATE	COUNTY MONROE	TOWN-VILLAGE-CITY	SECTION	TOWNSHIP	RANGE
Ronald Parish			Grant	35	T. 35 N.	R. 2 W.

NOTES 5310.36



■ = Harrison Monument

ORIGINAL SURVEY DATA

BY

DATE Oct. 30, 1981

SURVEYED BY H.A. Sime	CONTRACT DATE Sept. 11, 1981	COUNTY MONROE	TOWN-VILLAGE-CITY Grant	SECTION 36	TOWNSHIP 19N	RANGE 2W
--------------------------	---------------------------------	---------------	----------------------------	---------------	-----------------	-------------