

21902360020

I, Harley A. Sime do hereby certify that on the twenty-second day of September 1981 I found (evidence) ~~blaze~~ of the South $\frac{1}{4}$ corner of Section 36, T 19 N, R 2 W Fourth Principal Meridian, and I re-established said corner according to the Wisconsin Statutes as shown and described hereon.

Dated this 29th day of Sept. 1981

Harley A. Sime

Monroe County Surveyor

Approved: ^{Title} HARLEY A. SIME
MONROE CO. SURVEYOR

COUNTY SURVEYOR FORM NO. 1

Description of corner and witness monuments, references and accessories used to perpetuate the original or re-established location of this corner:

Witnesses to corner location:

Bryan H. Meyer

Gary L. Dechant

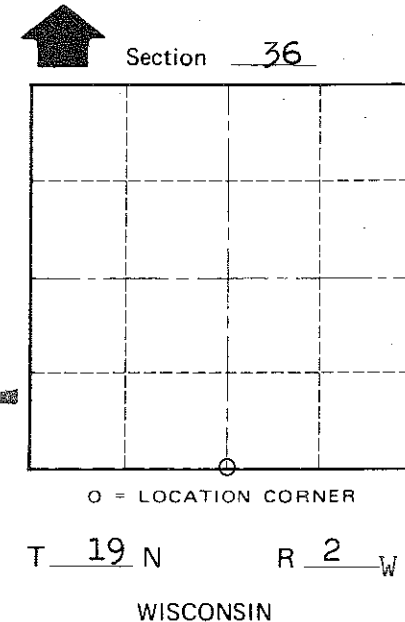
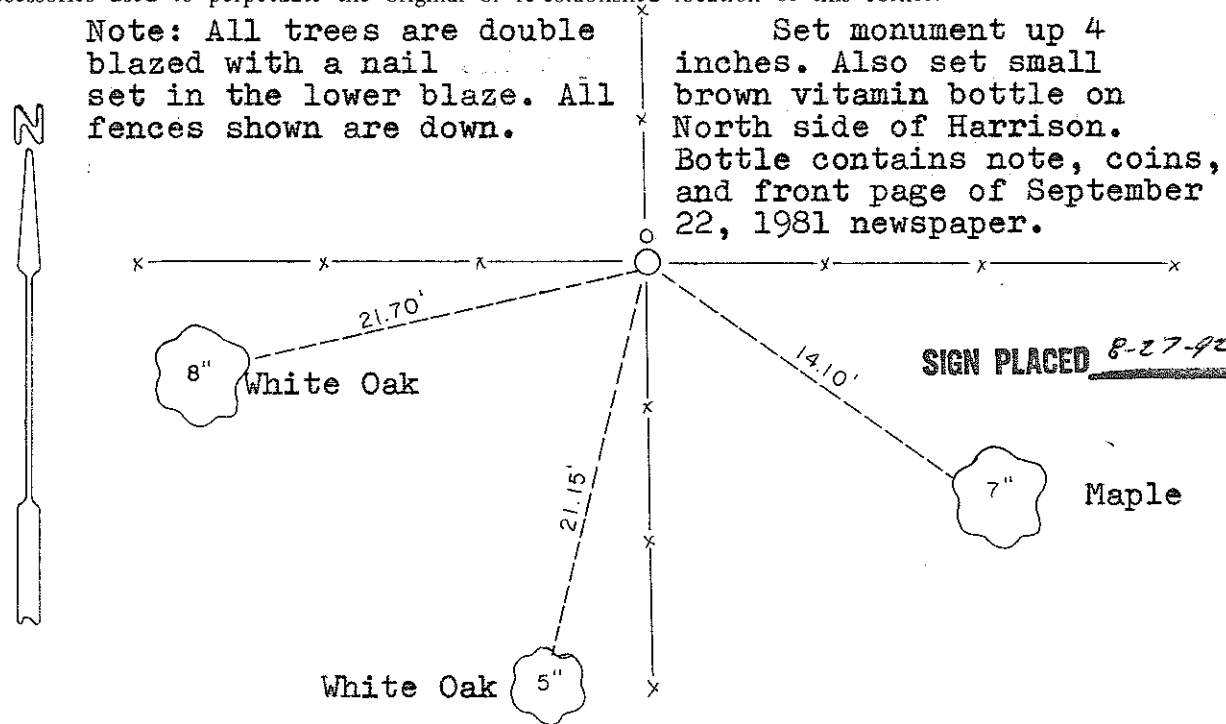
History of corner establishment since Original Government Survey

No subsequent history of monument perpetuation since the original U.S. Government Survey.

Description of corner evidence found:

Accepted four way fence corner as the best available evidence.

Note: All trees are double blazed with a nail set in the lower blaze. All fences shown are down.



SURVEY CONTROL ORDER

Horizontal	_____
Vertical	_____

WISCONSIN COORDINATE SYSTEM

Corner	East (X)	North (Y)	Elevation (Z)	Zone
Control Sta. Name				

~~City, Village or~~ Town of Grant
 County of Monroe