

CERTIFICATE

CERTIFIED LAND CORNER

No. 119

21902352000

I, Ronald D Parish, do hereby certify that on the 8th day of September 1981, I found (evidence) (no evidence) of the S 1/2 corner of Section 35, T 19 N, R 2 W Fourth Principal Meridian, and I re-established said corner according to the Wisconsin Statutes as shown and described hereon.

Dated this 14th day of Sept 1981.

Ronald D Parish, R. L. S. 1460

Title

History of corner establishment since Original Government Survey

No subsequent history of monument perpetuation since the original U. S. Government Survey.

Description of corner evidence found:

Set the corner at the intersection of centerline of 21st Avenue and the existing fencelines for lack of better evidence

COUNTY SURVEYOR FORM NO. 1

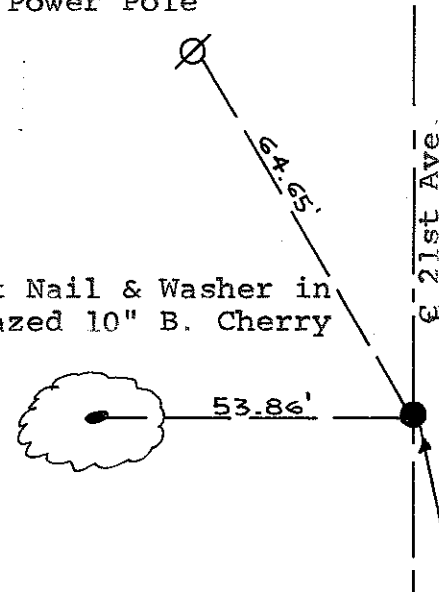
Description of corner and witness monuments, references and accessories used to perpetuate the original or re-established location of this corner:

Witnesses to corner location:

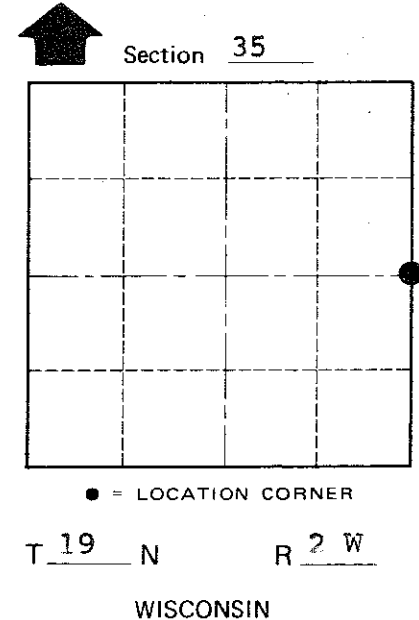
Ronald D. Parish
Todd J. Schmitz

Set Nail & Washer in Power Pole

Set Nail & Washer in Blazed 10" B. Cherry



N



Approved: **HARLEY A. SIME**
MONROE CO. SURVEYOR

SURVEY CONTROL ORDER

| | |
|------------|-------|
| Horizontal | _____ |
| Vertical | _____ |

WISCONSIN COORDINATE SYSTEM

| Corner | East (X) | North (Y) | Elevation (Z) | Zone |
|-------------------|----------|-----------|---------------|------|
| Control Sta. Name | | | | |

City, Village or Town Grant
County of Monroe