

21902342000

I, William C. Jung, do hereby certify that on the 11th day of September 1982, I found (evidence) ~~of the~~ of the East 1/4 corner of Section 34, T 19 N, R 2 W Fourth Principal Meridian, and I re-established said corner according to the Wisconsin Statutes as shown and described hereon.

Dated this 25th day of Feb. 1983.

William C. Jung

Deputy County Surveyor

Title

History of corner establishment since Original Government Survey

In August and September of 1911 Fred Holden re-established this corner. In September of 1981 Parish found a stone at this corner.

Description of corner evidence found:

In September of 1981 Parish shows an existing stone w/cross. He says that there is a Harrison by it. I did not find a witness Harrison. The stone at the corner is unrecorded, but it definitely is Holden's corner location. An old bearing tree to the SW fits the stone as per Holden's notes. I accepted the stone as the corner as did Parish.

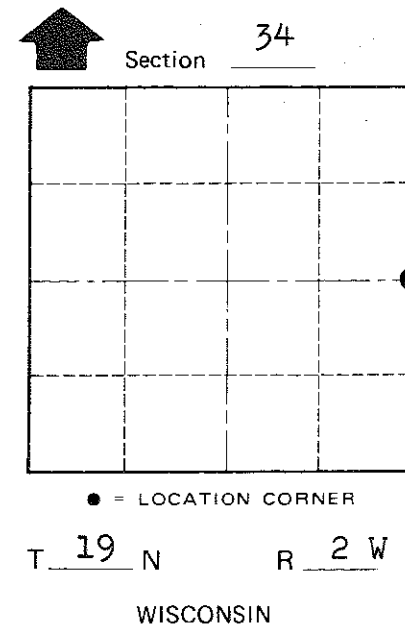
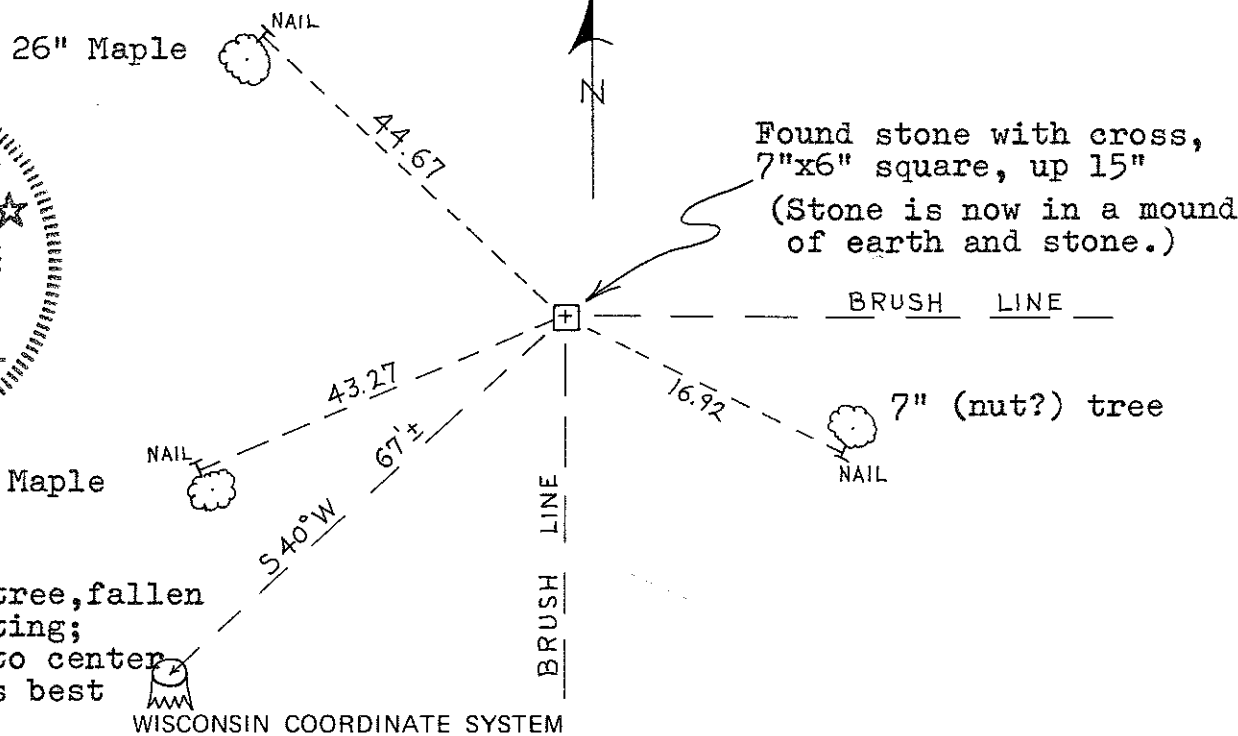
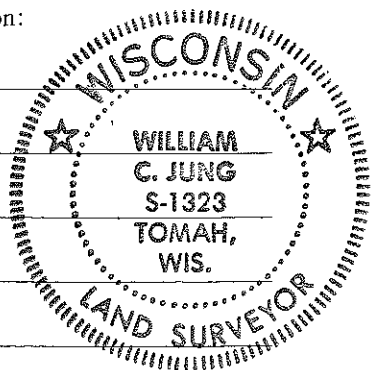
Approved: HARLEY A. SIME
MONROE CO. SURVEYOR

Description of corner and witness monuments, references and accessories used to perpetuate the original or re-established location of this corner:

Witnesses to corner location:

William Jung

Bryan Meyer



COUNTY SURVEYOR FORM NO. 1

SURVEY CONTROL ORDER

| | |
|------------|-------|
| Horizontal | _____ |
| Vertical | _____ |

Holden's tree, fallen down & rotting; distance to center of tree as best I could.

WISCONSIN COORDINATE SYSTEM

| Corner | East (X) | North (Y) | Elevation (Z) | Zone |
|-------------------|----------|-----------|---------------|------|
| Control Sta. Name | | | | |

City, Village or Town Grant
County of Monroe