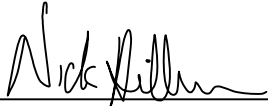


CERTIFICATE

I, Nicholas M. Hillmer, do hereby certify that this document and the data contained herein was prepared by me or under my direct supervision and that I am a duly Licensed Land Surveyor under the laws of the State of Wisconsin.

Dated this 23rd day of May, 2013



Nicholas M. Hillmer, P.L.S. 2909
Anderson Engineering of Minnesota, LLC.

CERTIFIED LAND CORNER

History of corner established since Original Government Survey

Fred A. Holden was here in 1911 and set a buggy axle. In September of 1981 Parish found Holden's buggy axle and set a Harrison monument by it. William Jung found Holden's buggy axle. The Harrison monument on the west side of the axle is a witness corner.

Description of evidence found

On March 13th, 2013, Anderson Engineering of Minnesota located the buggy axle and Harrison monument. The axle is the corner and the Harrison monument is a witness corner. An old downed fence line runs east, west, and north from the corner.

No. 21902340020

Description of corner and witness monuments, references and accessories used to perpetuate the original or re-established location of this corner:

Witnesses to corner location:

Nick Hillmer
Josh Oslund
Dan Greenwald

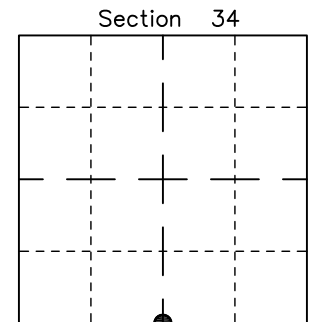
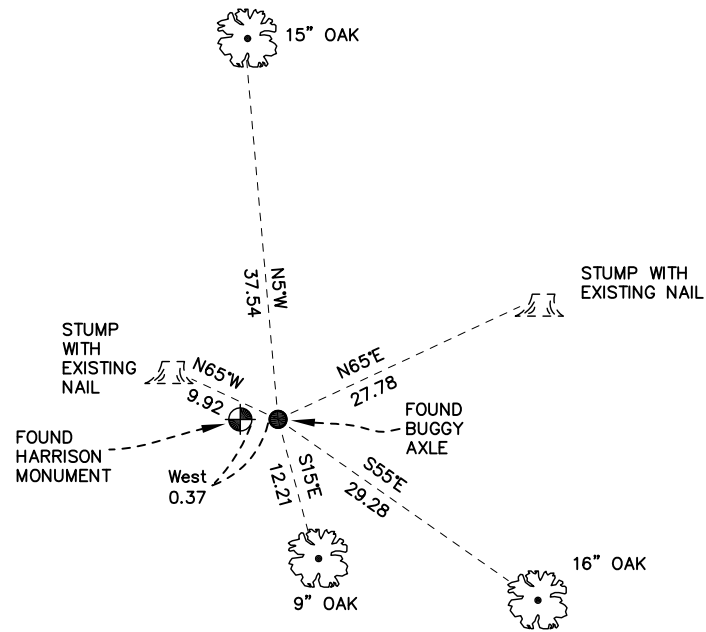
MONROE COUNTY
COORDINATE SYSTEM
NAD 1983 (2007)

BUGGY AXLE

Northing (Y) 426334.11
Easting (X) 681131.59

Base Station - 22 182W

Northing (Y) 408053.25
Easting (X) 679287.00



● = LOCATION CORNER
Corner I.D. S 1/4 34
T 19 N R 2 W
Town of Grant
Monroe County, WI.

All distances are shown in U.S. Survey Feet.
Ties are to 60D nails set in trees.
Bearings are for tie reference purposes only.
Coordinates were derived from RTK GNSS procedures.

21902340020

I, William C. Jung, do hereby certify that on the 11th day of September 1982, I found (evidence) ~~(no evidence)~~ of the South 1/4 corner of Section 34, T 19 N, R 2 W Fourth Principal Meridian, and I re-established said corner according to the Wisconsin Statutes as shown and described hereon.

Dated this 25th day of Feb. 1983

William C. Jung

Deputy County Surveyor

Title

History of corner establishment since Original Government Survey

Fred Holden was at this corner in August and September of 1911. He set an iron buggy axle at the corner. In September of 1981 Parish found Holden's buggy axle and set a Harrison by it.

Description of corner evidence found:

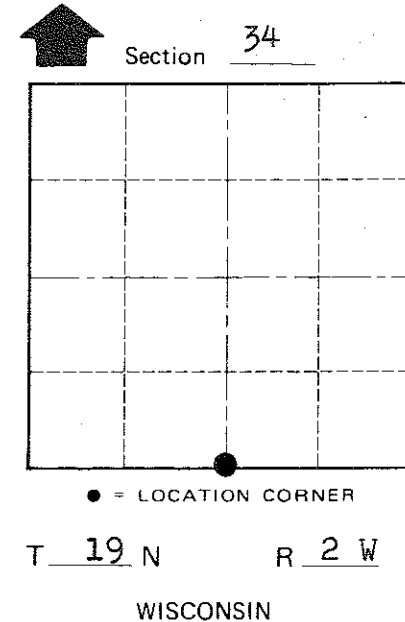
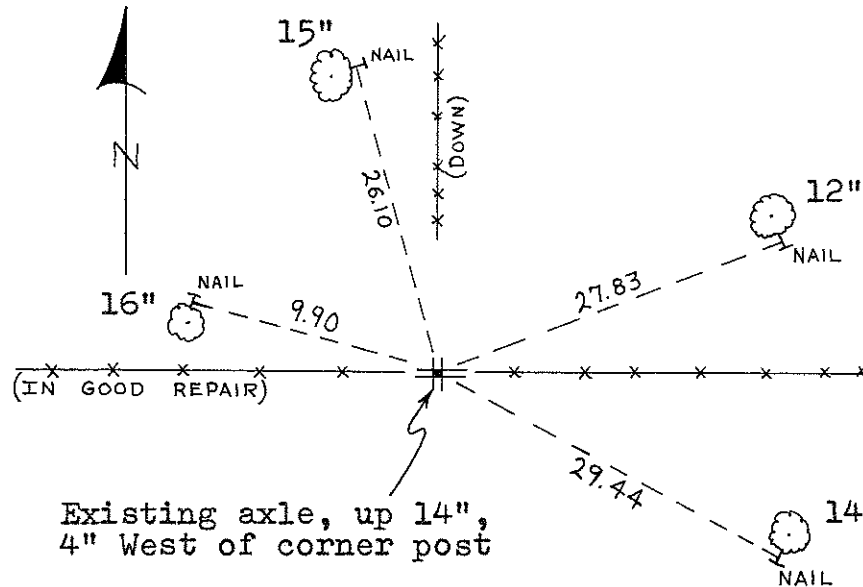
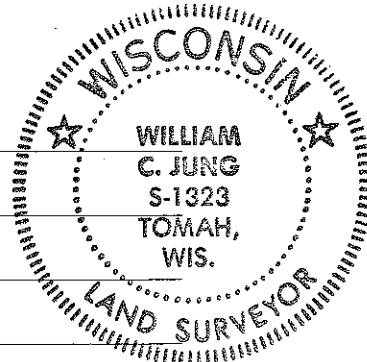
I found Holden's buggy axle. On the West side of the axle is a Harrison. The Harrison is a witness marker.

Description of corner and witness monuments, references and accessories used to perpetuate the original or re-established location of this corner:

Witnesses to corner location:

William Jung

Bryan Meyer



Approved: **HARLEY A. SIME**
MONROE CO. SURVEYOR

SURVEY CONTROL ORDER

Horizontal _____
Vertical _____

WISCONSIN COORDINATE SYSTEM

Corner	East (X)	North (Y)	Elevation (Z)	Zone
Control Sta. Name				

Note: All the bearing trees are double blazed Black Oaks. Each distance is to a nail in a hack on the side of the tree.

~~City, Village~~ or Town Grant
County of Monroe

COUNTY SURVEYOR FORM NO. 1