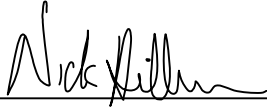


CERTIFICATE

I, Nicholas M. Hillmer, do hereby certify that this document and the data contained herein was prepared by me or under my direct supervision and that I am a duly Licensed Land Surveyor under the laws of the State of Wisconsin.

Dated this 23rd day of May, 2013



Nicholas M. Hillmer, P.L.S. 2909
Anderson Engineering of Minnesota, LLC.

CERTIFIED LAND CORNER

History of corner established since Original Government Survey

Fred A. Holden re-established this corner in August of 1911 and set a stone. The McCoy boundary notes from WWII indicate that a monument was probably set at this corner. Denzine used the McCoy monument as the corner in March of 1976. William Jung used the McCoy monument as a tie in November 1976. Parish used the McCoy monument as the corner in September of 1981. William Jung found Holden's stone 1.8 feet north of the McCoy marker. In February of 1983 Jung recorded a corner certificate for the corner and stated that the stone is the actual corner and the McCoy marker is now a witness point.

Description of evidence found

On January 24th, 2013, Anderson Engineering of Minnesota located the stone with an "X" 0.3 feet below grade and 0.1 feet west of a witness post with survey marker sign. Also located was the McCoy monument, a 4 inch U.S. ARMY CORPS OF ENGINEERS survey control mark disk set in concrete. The stone with an "X" is perpetuated as the corner.

No. 21902332000

Description of corner and witness monuments, references and accessories used to perpetuate the original or re-established location of this corner:

Witnesses to corner location:

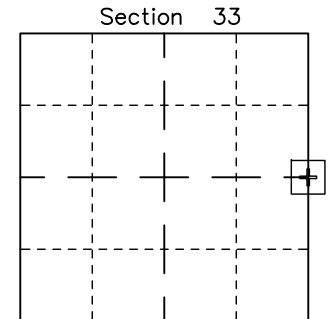
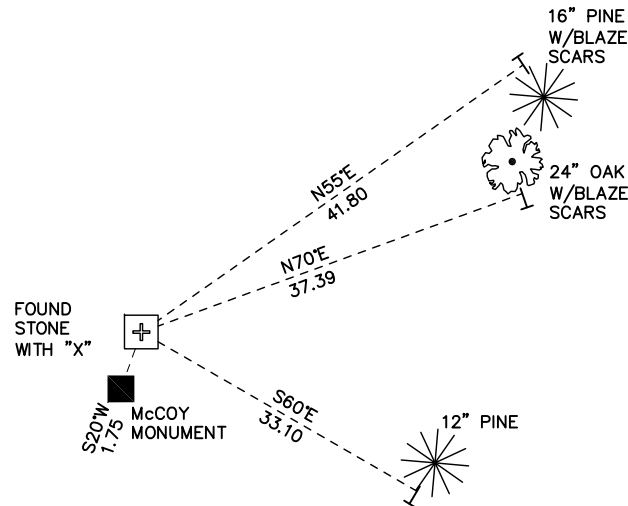
Nick Hillmer
Josh Oslund
Dan Greenwald

MONROE COUNTY
COORDINATE SYSTEM
NAD 1983 (2007)

STONE

Northing (Y) 428978.58
Easting (X) 678439.10

Base Station - 22 182W
Northing (Y) 408053.25
Easting (X) 679287.00



⊕ = LOCATION CORNER
Corner I.D. E 1/4 33
T 19 N R 2 W
Town of Grant
Monroe County, WI.

All distances are shown in U.S. Survey Feet.
Ties are to 60D nails set in trees.
Bearings are for tie reference purposes only.
Coordinates were derived from RTK GNSS procedures.

21902332000

I, William C. Jung, do hereby certify that on the 10th day of September 1982 I found (evidence) ~~no evidence~~ of the West 1/4 corner of Section 34, T 19 N, R 2 W Fourth Principal Meridian, and I re-established said corner according to the Wisconsin Statutes as shown and described hereon.

Dated this 25th day of Feb. 1983.

William C. Jung
Deputy County Surveyor
Title

History of corner establishment since Original Government Survey

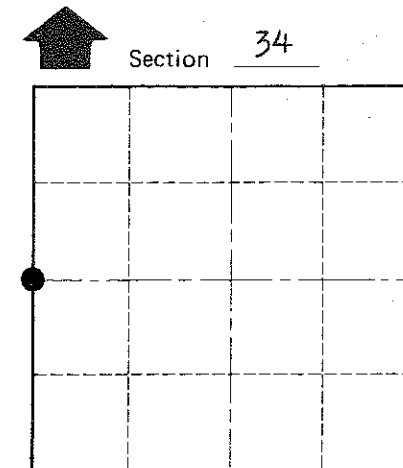
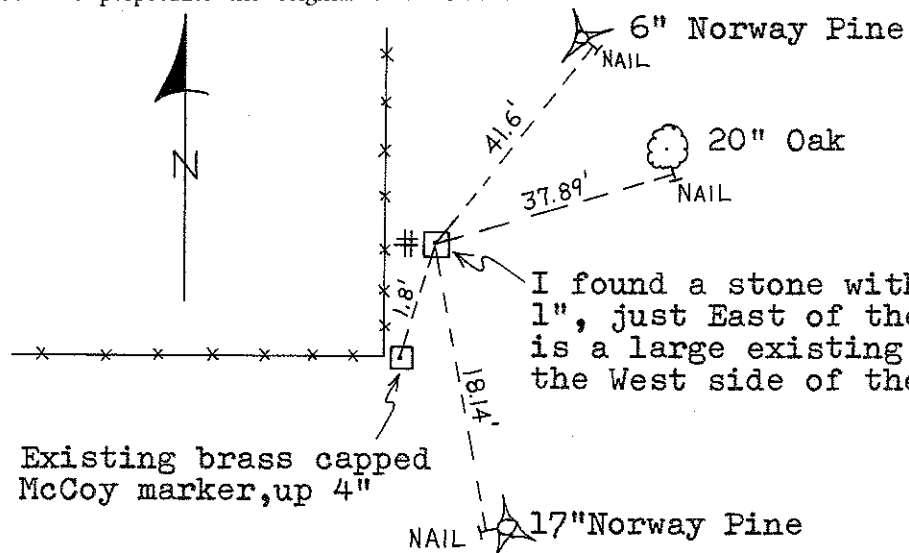
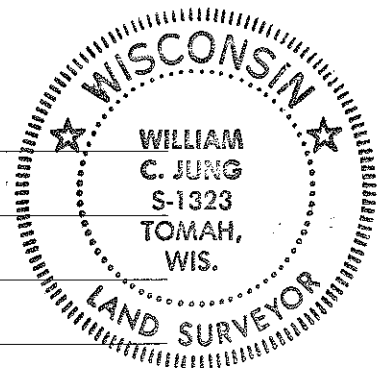
Fred Holden re-established this corner in August of 1911 and set a stone. The McCoy boundary notes during WWII indicate that a monument was probably set at this corner. In December of 1971 Duane Marten found a McCoy monument at the occupied corner. Denzine used this monument in March of 1976. I used it as a tie in November of 1976. Parish also used the McCoy monument in September of 1981.

I found Holden's stone 1.8' North of the McCoy marker. The stone is the actual corner. Apparently no one had looked for the stone previously. The McCoy marker is now a witness point.

Description of corner and witness monuments, references and accessories used to perpetuate the original or re-established location of this corner:

Witnesses to corner location:

William Jung
Bryan Meyer



● = LOCATION CORNER

T 19 N R 2 W

WISCONSIN

Approved: **HARLEY A. SIME**
MONROE CO. SURVEYOR

Note: All the bearing trees are double blazed. Each distance is to a nail in a hack on the side of the tree.

SURVEY CONTROL ORDER

Horizontal	_____
Vertical	_____

WISCONSIN COORDINATE SYSTEM

Corner	East (X)	North (Y)	Elevation (Z)	Zone
Control Sta. Name				

~~City, Village~~ or Town Grant
County of Monroe

COUNTY SURVEYOR FORM NO. 1