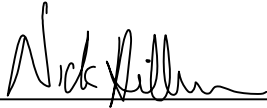


CERTIFICATE

I, Nicholas M. Hillmer, do hereby certify that this document and the data contained herein was prepared by me or under my direct supervision and that I am a duly Licensed Land Surveyor under the laws of the State of Wisconsin.

Dated this 23rd day of May, 2013



Nicholas M. Hillmer, P.L.S. 2909
Anderson Engineering of Minnesota, LLC.

CERTIFIED LAND CORNER

History of corner established since Original Government Survey

In 1976 Harley A. Sime searched for the corner and found nothing. Mr. Sime set a Harrison monument at a proportionate location using two boundary markers found to the north and south.

No. 21902330020

Description of evidence found

On February 20th, 2013, Anderson Engineering of Minnesota located the Harrison monument 0.4 feet east of a yellow channel iron post.

Description of corner and witness monuments, references and accessories used to perpetuate the original or re-established location of this corner:

Witnesses to corner location:

Nick Hillmer
Josh Oslund
Dan Greenwald

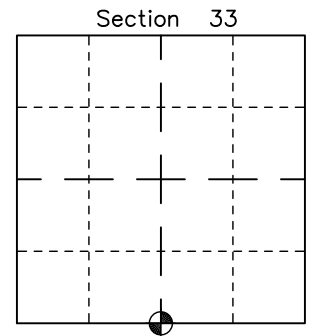
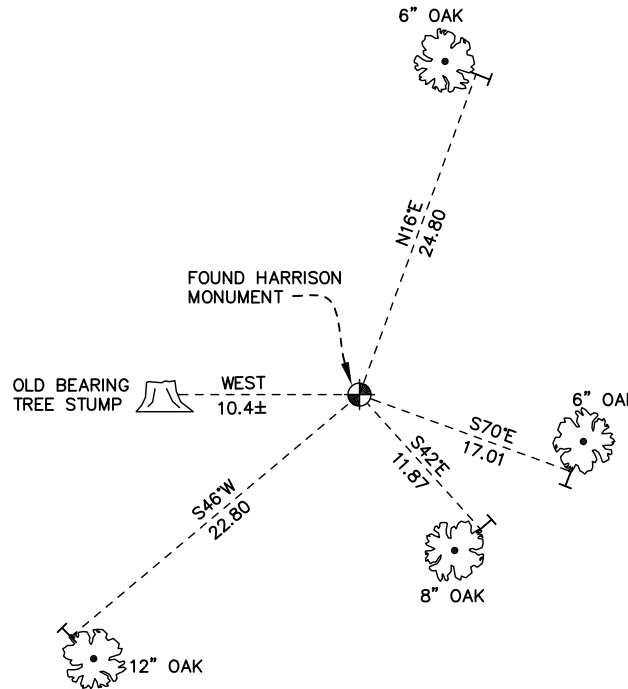
MONROE COUNTY
COORDINATE SYSTEM
NAD 1983 (2007)

HARRISON MONUMENT
Northing (Y) 426296.10
Easting (X) 675896.28

Base Station - 22 182W
Northing (Y) 408053.25
Easting (X) 679287.00



All distances are shown in U.S. Survey Feet.
Ties are to 60D nails set in trees.
Bearings are for tie reference purposes only.
Coordinates were derived from RTK GNSS procedures.



⊙ = LOCATION CORNER
Corner I.D. S 1/4 33
T 19 N R 2 W
Town of Grant
Monroe County, WI.

CERTIFICATE

CERTIFIED LAND CORNER

No. 128

21902330020

I, Harley A. Sime, do hereby certify that on the 23rd day of March 19 76, I found (evidence) (no evidence) of the S 1/4 corner of Section 33, T 19 N, R 2 W Fourth Principal Meridian, and I re-established said corner according to the Wisconsin Statutes as shown and described hereon.

History of original corner establishment:

Description of corner evidence found:

Dated this 6th day of Feb. 19 78.

Searched for corner, however all signs of occupation have been destroyed. Set Harrison Monument at proportionate location using two McCoy boundary Markers found to the North and one to the South.

County Surveyor
Title

Approved: **HARLEY A. SIME**
MONROE CO. SURVEYOR

Description of corner and witness monuments, references and accessories used to perpetuate the original or re-established location of this corner:

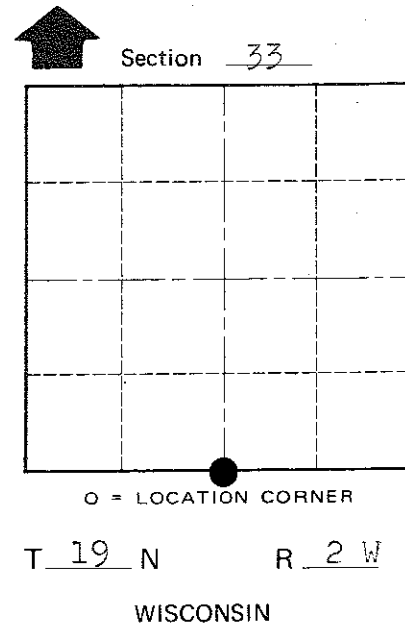
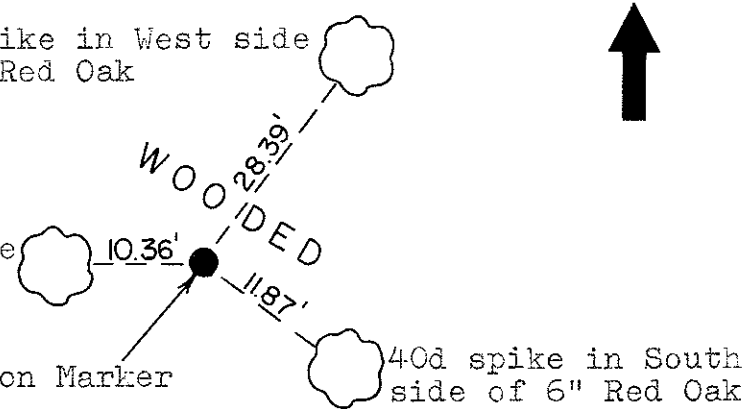
Witnesses to corner location:

J. Denzine, R.L.S. 1129
(Eau Claire, Wi.)
D. ROBERTS

40d spike in West side of 6" Red Oak

40d spike in North side of 16" Red Oak

Harrison Marker



COUNTY SURVEYOR FORM NO. 1

SURVEY CONTROL ORDER

Horizontal	_____
Vertical	_____

WISCONSIN COORDINATE SYSTEM

Corner	East (X)	North (Y)	Elevation (Z)	Zone
Control Sta. Name				

City, Village or Town Grant
County of Monroe