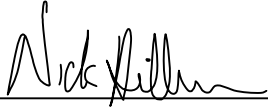


# CERTIFICATE

I, Nicholas M. Hillmer, do hereby certify that this document and the data contained herein was prepared by me or under my direct supervision and that I am a duly Licensed Land Surveyor under the laws of the State of Wisconsin.

Dated this 23rd day of May, 2013



Nicholas M. Hillmer, P.L.S. 2909  
Anderson Engineering of Minnesota, LLC.

# CERTIFIED LAND CORNER

No. 21902330000

## History of corner established since Original Government Survey

In 1976 Harley A. Sime searched for the corner and found nothing. Mr. Sime set a Harrison monument at the corner by doubling over two McCoy boundary markers found to the north, the E 1/4 corner and the NE corner of the SE 1/4-SE 1/4 of Section 33. This distance proportioned well with the government distance of the existing 40 corner to the south.

## Description of evidence found

On March 12th, 2013, Anderson Engineering of Minnesota located the Harrison monument 0.5 feet west of a witness post with survey marker sign.

Description of corner and witness monuments, references and accessories used to perpetuate the original or re-established location of this corner:

Witnesses to corner location:

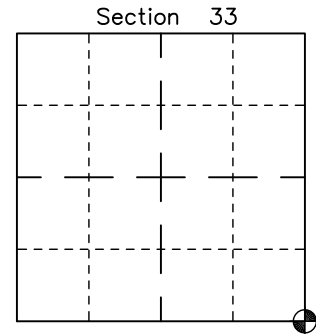
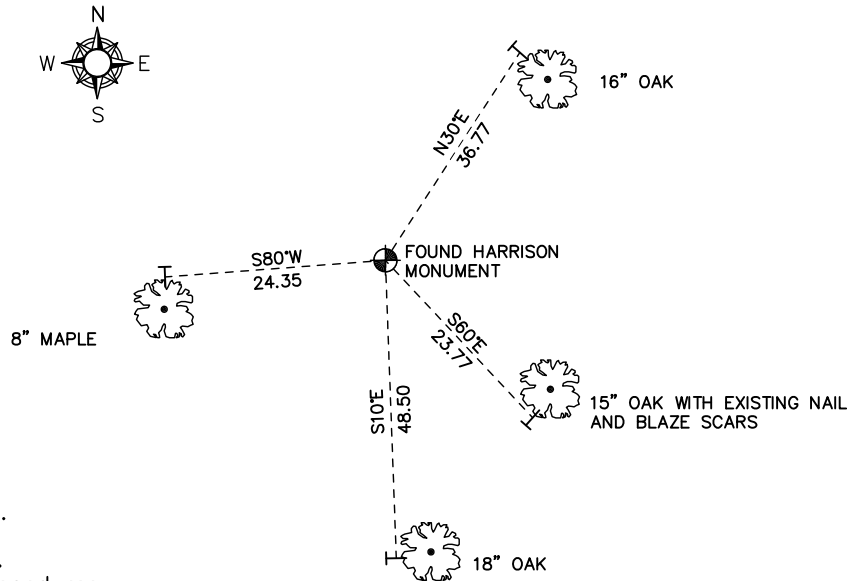
Nick Hillmer  
Josh Oslund  
Dan Greenwald

MONROE COUNTY  
COORDINATE SYSTEM  
NAD 1983 (2007)

HARRISON MONUMENT  
Northing (Y) 426327.56  
Easting (X) 678494.82

Base Station - 22 182W  
Northing (Y) 408053.25  
Easting (X) 679287.00

All distances are shown in U.S. Survey Feet.  
Ties are to 60D nails set in trees.  
Bearings are for tie reference purposes only.  
Coordinates were derived from RTK GNSS procedures.



● = LOCATION CORNER  
Corner I.D. SE 33  
T 19 N R 2 W  
Town of Grant  
Monroe County, WI.

CERTIFICATE

CERTIFIED LAND CORNER

No. 127

21902330000

I, Harley A. Sime, do hereby certify that on the 22nd day of March 1976, I found (evidence) (no evidence) of the SE corner of Section 33, T 19 N, R 2 W, Fourth Principal Meridian, and I re-established said corner according to the Wisconsin Statutes as shown and described hereon.

History of original corner establishment:

Description of corner evidence found:

Dated this 6th day of Feb. 1978.

Searched for corner with probe and magnetic locator. Found nothing, so set Harrison Monument by doubling over two McCoy boundary markers found to the North. (E 1/4 corner and the NE cor.-SE 1/4-SE 1/4) This proportioned well to government distance to existing 40 corner to the South. (We also dug out the fence corner but found nothing).

County Surveyor  
Title

**Approved: HARLEY A. SIME**  
**MONROE CO. SURVEYOR**

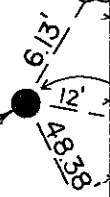
Description of corner and witness monuments, references and accessories used to perpetuate the original or re-established location of this corner:

Witnesses to corner location:

J. Denzine, R.L.S. 1129  
(Eau Claire, Wi.)  
D. ROBERTS

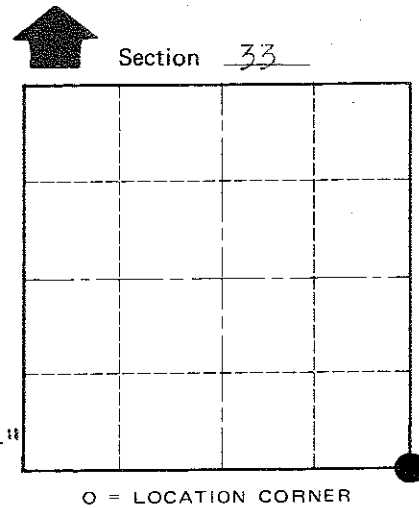
60d spike in East side of 6" Red Oak

Harrison Marker



60d spike in South side of 14" Red Oak

60d spike in East side of 14" White Oak



T 19 N R 2 W  
WISCONSIN

COUNTY SURVEYOR FORM NO. 1

SURVEY CONTROL ORDER

Horizontal	_____
Vertical	_____

WISCONSIN COORDINATE SYSTEM

Corner	East (X)	North (Y)	Elevation (Z)	Zone
Control Sta. Name				

City, Village or Town Grant  
County of Monroe