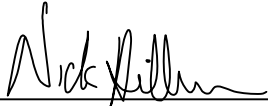


CERTIFICATE

I, Nicholas M. Hillmer, do hereby certify that this document and the data contained herein was prepared by me or under my direct supervision and that I am a duly Licensed Land Surveyor under the laws of the State of Wisconsin.

Dated this 21st day of May, 2013



Nicholas M. Hillmer, P.L.S. 2909
Anderson Engineering of Minnesota, LLC.

CERTIFIED LAND CORNER

History of corner established since Original Government Survey

The 1940's McCoy boundary notes show a corner at this location

No. 21902281010

Description of evidence found

On December 19th, 2012, Anderson Engineering of Minnesota located a 1 1/2 inch pipe 3 feet below grade. The pipe was accepted as the best available evidence. On April 21st, 2013, Anderson Engineering of Minnesota replaced the pipe with a 3/4 inch aluminum drive monument with a 3 1/4 inch cap, stamped "FORT MCCOY BOUNDARY" "2013" "ANDERSON ENG. OF MN."

Description of corner and witness monuments, references and accessories used to perpetuate the original or re-established location of this corner:

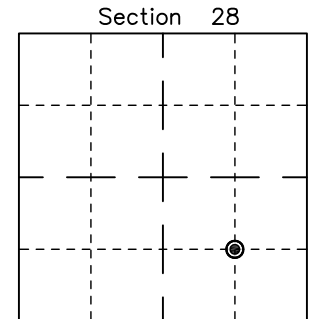
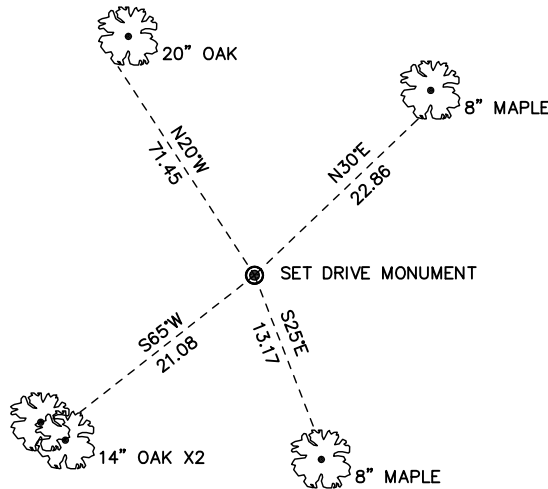
Witnesses to corner location:

Nick Hillmer
Josh Oslund
Dan Greenwald

MONROE COUNTY
COORDINATE SYSTEM
NAD 1983 (2007)

MCCOY DRIVE MONUMENT
Northing (Y) 432981.78
Easting (X) 677081.58

Base Station - 22 182W
Northing (Y) 408053.25
Easting (X) 679287.00



● = LOCATION CORNER
Corner I.D. SE 1/16 28
T 19 N R 2 W
Town of Grant
Monroe County, WI.

All distances are shown in U.S. Survey Feet.
Ties are to 60D nails set in trees.
Bearings are for tie reference purposes only.
Coordinates were derived from RTK GNSS procedures.