

17

U.S. PUBLIC LAND CORNER MAINTENANCE

Corner ID : E1/4 Sec.4, T19N-R1W

21901042000

DATE	CREW	MONUMENT TYPE -----
April 23, 2014	Zachariah P.Dechant Gary L. Dechant	Existing Harrison, top broke off, down 16", 12' east of centerline CTH "O" 6" White Pine S83E, 56.0' only reference found

References:

	<u>Bearing</u>	<u>Distance</u>
1) Set 3/4"x24" hex iron bar, 3' west of remaining 6"(now 10") white pine	S83E	53.50'
2) Set 3/4"x24' hex iron bar, 4' NW of 16" White Pine	S42E	73.84'
3) Set 3/4"x24" hex iron bar 24' west centerline CTH "O" east of resevoir	N83W	36.40'
4) Set 3/4"x24" hex iron bar 25' west centerline CTH "O" east of resevoir	N42W	54.80'

COORDINATES:

NOTE: Reference markers and Harrison set on straight lines



21901042000

(PAGE 2)

I, Gary L. Dechant, do hereby certify that on the 28th day of October 1987, I found (evidence) ~~XXXXXXXXXX~~ of the W $\frac{1}{2}$ corner of Section 3, T 19 N, R 1 W Fourth Principal Meridian, and I re-established said corner according to the Wisconsin Statutes as shown and described hereon.

Dated this 3rd day of Nov. 1987.

Gary L. Dechant
 Registered Land Surveyor, 1744
Title

History of corner establishment since Original Government Survey

Description of corner evidence found:

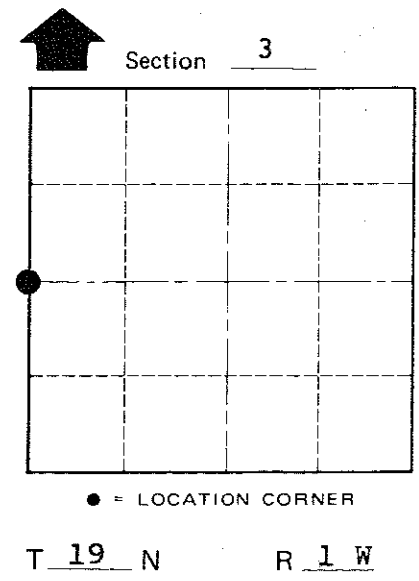
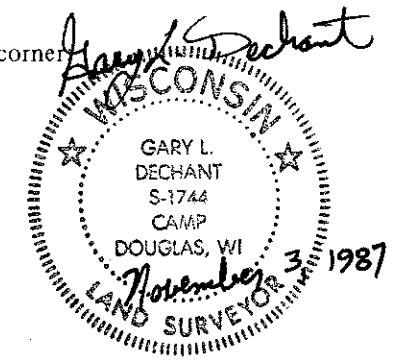
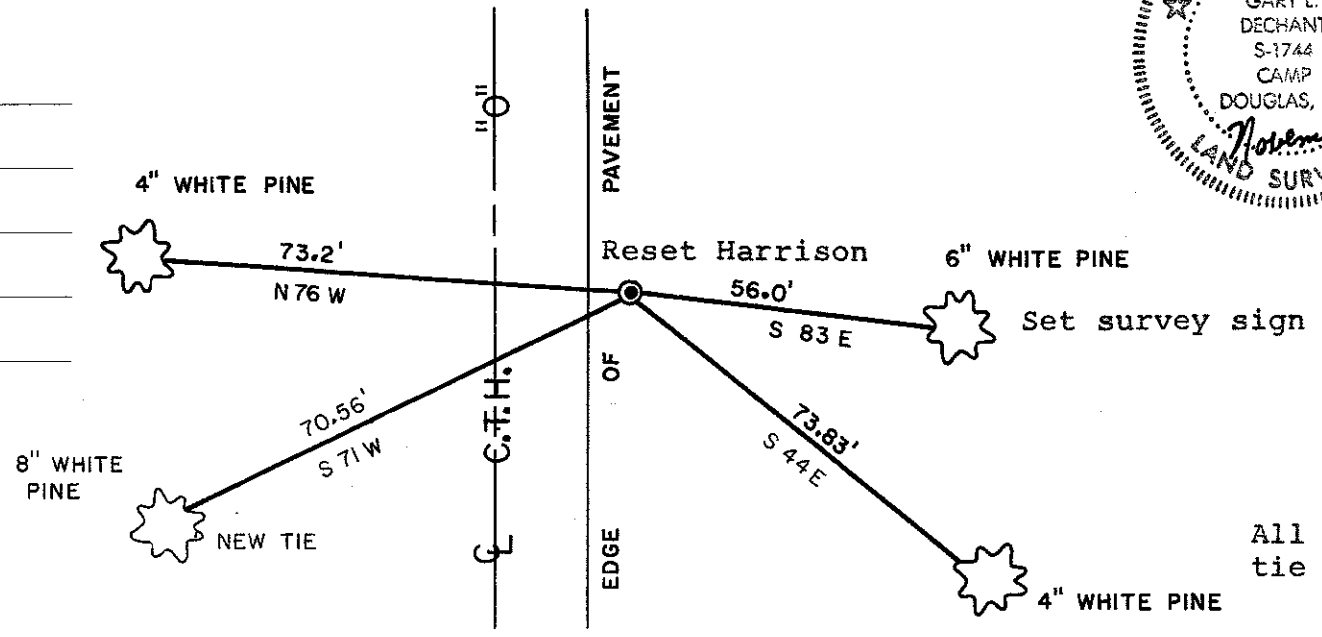
George Baker, Monroe County Highway Commissioner, contacted our office and stated highway repair is needed in this area, removed the existing Harrison Marker and replaced it from existing ties after road repair was completed.

Description of corner and witness monuments, references and accessories used to perpetuate the original or re-established location of this corner

Witnesses to corner location:

David E. Madison
Timothy S. Frederick

COUNTY SURVEYOR FORM NO. 1



All ties existing from March 1979 tie sheet.

SURVEY CONTROL ORDER

Horizontal	_____
Vertical	_____

WISCONSIN COORDINATE SYSTEM

Corner	East (X)	North (Y)	Elevation (Z)	Zone
Control Sta. Name				

City, Village or Town Lincoln
 County of Monroe

I, William C. Jung, do hereby certify that on the 26th day of March 1979, I found ~~evidence~~ (no evidence) of the W¹/₄ corner of Section 3, T 19 N, R 1 W Fourth Principal Meridian, and I re-established said corner according to the Wisconsin Statutes as shown and described hereon.

Dated this 28th day of March 1979.

William C. Jung, R.L.S. 1323

County Surveyor's Office

William C. Jung

History of corner establishment since Original Government Survey

No known recorded history since the original government survey.

Description of corner evidence found:

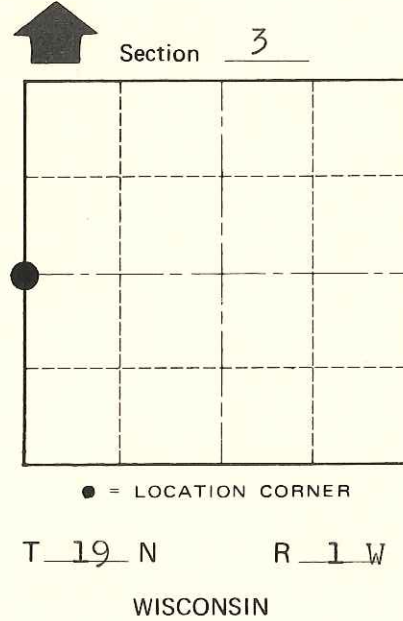
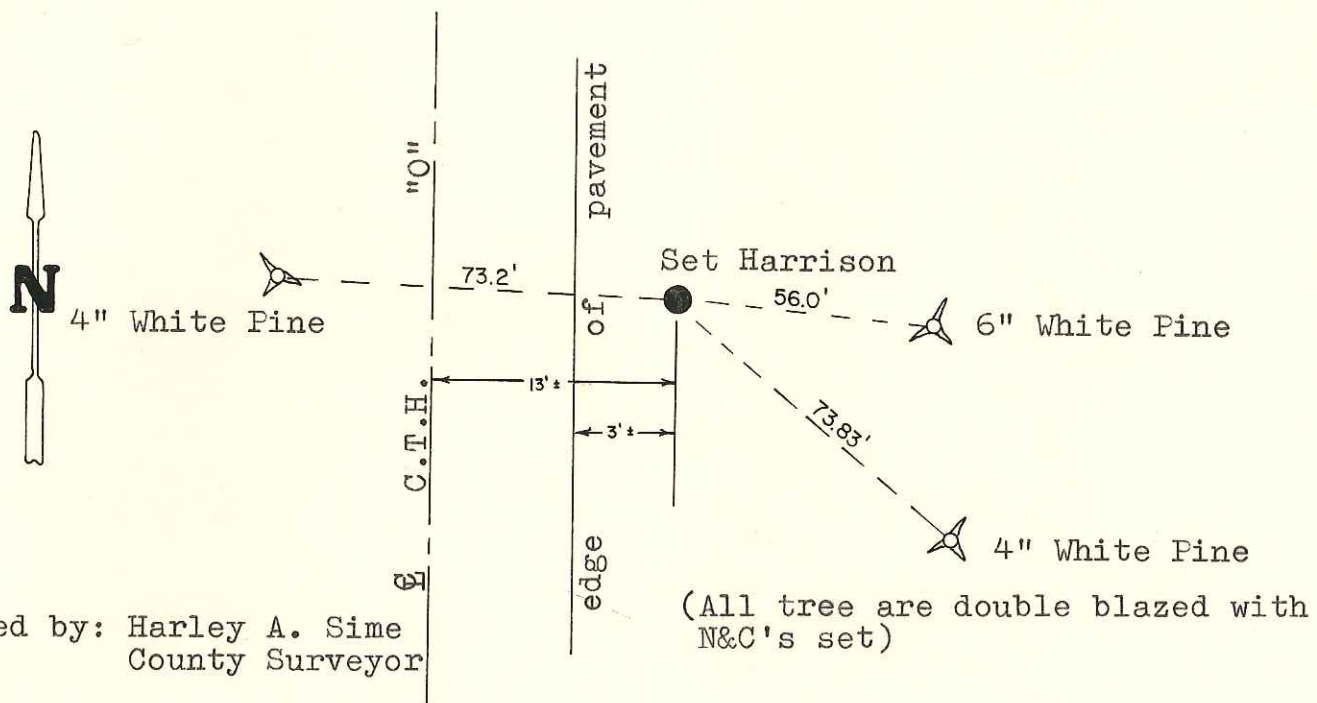
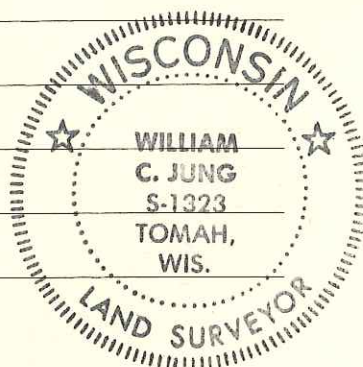
Set on line between section corners and at proportionate distances to the original government notes.

Description of corner and witness monuments, references and accessories used to perpetuate the original or re-established location of this corner:

Witnesses to corner location:

G. Dechant

C. Pietz



Approved by: Harley A. Sime
County Surveyor

(All tree are double blazed with N&C's set)

SURVEY CONTROL ORDER

Horizontal	_____
Vertical	_____

WISCONSIN COORDINATE SYSTEM

Corner	East (X)	North (Y)	Elevation (Z)	Zone
Control Sta. Name				

City, Village or Town Lincoln
County of Monroe

COUNTY SURVEYOR FORM NO. 1