

U.S. PUBLIC LAND CORNER MAINTENANCE

Corner ID : SE Sec.4, T19N-R1W

21901040000

DATE	CREW	MONUMENT TYPE -----
April 23, 2014	Zachariah P. Dechant Gary L. Dechant	Harrison Monument destroyed during road construction Reset corner from previous surveys in area and from only remaining tie, 6" White Pine S60W, 69.75'. Reset with 3/4"x18" hexagon iron bar, drove down 12" below road surface, set Railroad spike over iron bar. Falls 4' east traveled centerline


References:

- 1) Set 3/4"x24" hexagon iron bar, down 8", 4' SW 10" White Pine
- 2) Set 3/4"x24" hexagon iron bar, down 8", 4' N of 6" Maple
- 3) Set 3/4"x24" hex iron bar, down 4" on section line
- 4) Set 3/4"x24" hex iron bar, down 4", SE corner of riprap west of road

Bearing	Distance
S45E	104.34'
S46W	76.20'
West	33.00'
N56W	42.33'

COORDINATES:

Gary L. Dechant



April 23, 2014

21901040000

(PAGE 2)

I, Gary L. Dechant, do hereby certify that on the 28th day of October 19__, I found (evidence) (XXXXXXXXXX) of the NE corner of Section 9, T19 N, R1 W Fourth Principal Meridian, and I re-established said corner according to the Wisconsin Statutes as shown and described hereon.

Dated this 3rd day of Nov. 1987.

Gary L. Dechant

Registered Land Surveyor, 1744 Title

History of corner establishment since Original Government Survey

Description of corner evidence found:

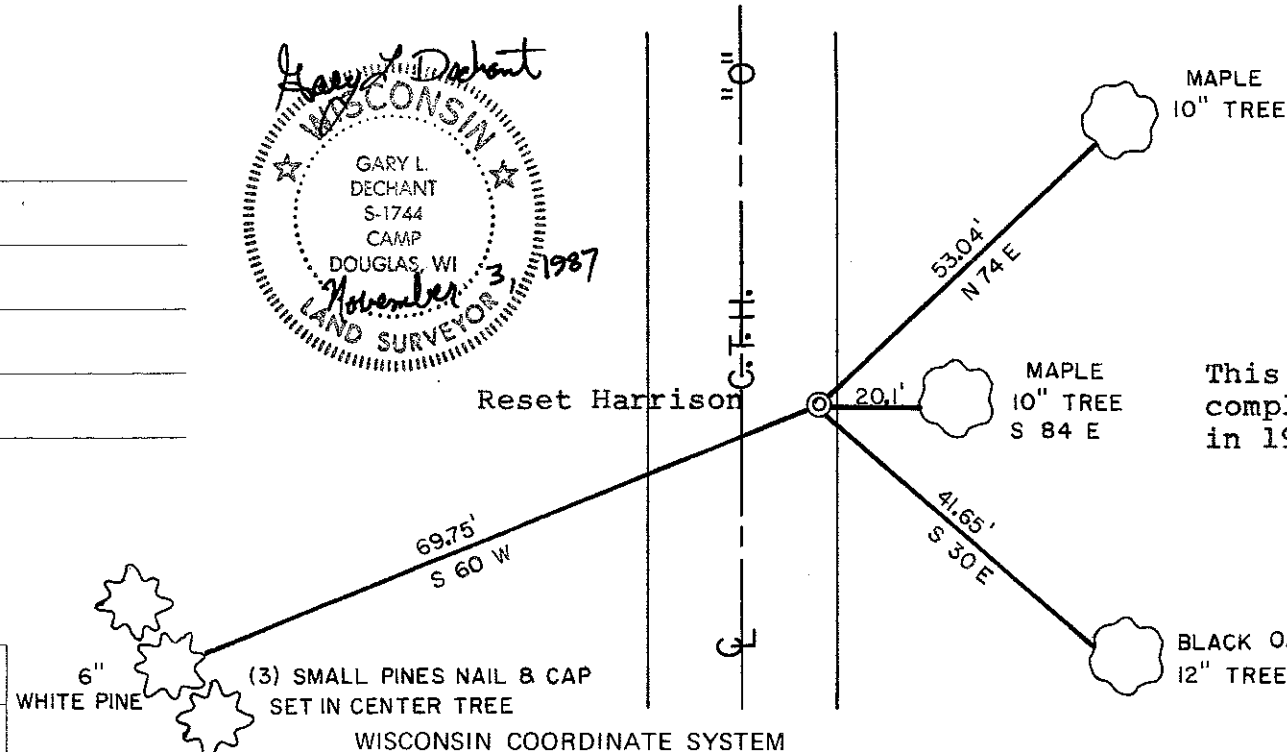
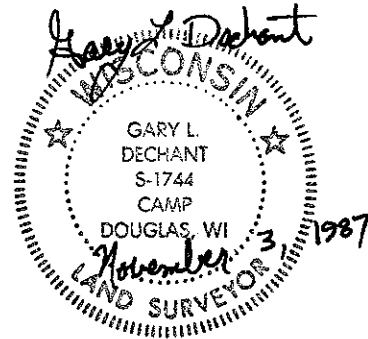
George Baker, Monroe County Highway Commissioner, contacted our office and stated highway repair was needed in this area and asked us to remove the Harrison Marker at this corner. We removed the existing Harrison and reset it from existing bearing trees of the October 1975 survey notes by William C. Jung, after road repair was completed.

Description of corner and witness monuments, references and accessories used to perpetuate the original or re-established location of this corner:

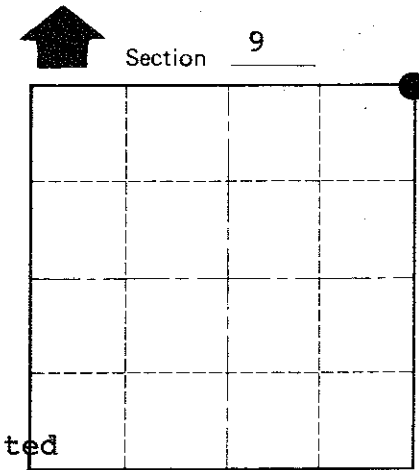
Witnesses to corner location:

David E. Madison

Timoty S. Frederick



This tree is not yet completely dead as stated in 1975 survey.



T 19 N R 1 W WISCONSIN

SURVEY CONTROL ORDER

Horizontal

Vertical

(3) SMALL PINES NAIL & CAP SET IN CENTER TREE

WISCONSIN COORDINATE SYSTEM

Table with 5 columns: Corner, East (X), North (Y), Elevation (Z), Zone. Row 1: Control Sta. Name.

All bearing trees existing

City, Village or Town Lincoln

County of Monroe

COUNTY SURVEYOR FORM NO. 1