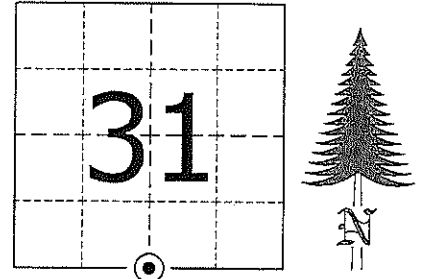


JACKSON COUNTY - U.S. PUBLIC LAND SURVEY MONUMENT RECORD

TYPE OF MONUMENT: Cast Iron Harrison Monument
 REFERENCED FOR SURVEY RECORDED IN CSM# _____ OR CSR# _____
 SURVEYOR'S FILE# OR PROJECT# Fieldbook: T20N-R1W, Pg. 18 - 19
 DRAWN BY: Ethan Remus
 WITNESS: Ethan Remus

CORNER VOL. 15, PAGE 2466
 CORNER# 22001310020
 SECTION 31, T 20 N, R 1W
 51/4 CORNER

GEOGRAPHIC LOCATION: NAD 83 (91) WISCRS- Jackson County
 COUNTY COORDINATE SYSTEM
 (TO BE ASSIGNED BY COUNTY)
 LATT: 44°09'37.10804" N
 LONG: 90°32'47.04744" W
 N = 48247.6673
 E = 166762.7834



LOCATION
(INDICATE W/ MONUMENT SYMBOL)

BASIS FOR MONUMENT LOCATION:

Please describe if this is a found, obliterated or lost corner. Give a complete history of the corner listing the vol. & page, dates, surveyor and description of found monument. Please list all parole testimony and who provided it as well as other witness' of recovery. Please describe the best way to reach this corner. Indicate how obstructed this monument might be for GPS observations. Continue on backside if necessary.

* James Freeman set a post for the quarter corner as part of the original Township Line survey in 1845. He referenced two bearing trees, a 10" Pine N79°W - 151.14', and a 14" White Oak S72°W - 123.42'.

* D.A. Blencoe used this corner to reestablish the SW corner of the Township for his resurvey of South Millston around 1936. His notes on this corner are difficult to understand. It is my interpretation that he found a stone 3.8' South and a bedrail 16.25' East and 4.95' South of his calculated position. He notes that these were said to have been set by a McNutt (local resident?). He set a hard sandstone, 19" x 19" x 5-1/2", at the corner. He notes it is on the South side of an octagon post in a mound of earth with pits E-W. (Blencoe's South Millston Fieldbook on Pg. 59)

* Harley Sime visited this corner in 1980. He found the bedrail as referenced by Blencoe, but could not find the stone at the corner. He reestablished the corner using the distances noted by Blencoe from the bedrail. He set a Harrison monument at the corner and referenced it to three bearing trees. He notes the corner is in the East edge of a road. (See previous tie sheet)

* In December of 2015, I found Sime's Harrison monument in excellent condition, down 17" below the ground, just off the East edge of a sand road. I found Sime's bearing trees as depicted below. I found the bedrail as referenced by Blencoe, in good condition, up 10" above ground. I found a 3/4" round iron bar to the East with a Monroe Co. witness sign 18" South. I do not know where this iron bar came from. It appears to have been set at the intersection of the East road R/W line and the section line East. I accepted Sime's Harrison as the quarter corner and drove a 7' steel witness sign post 9' East. I drove three rebar for additional references as depicted below. The corner is open for GPS.

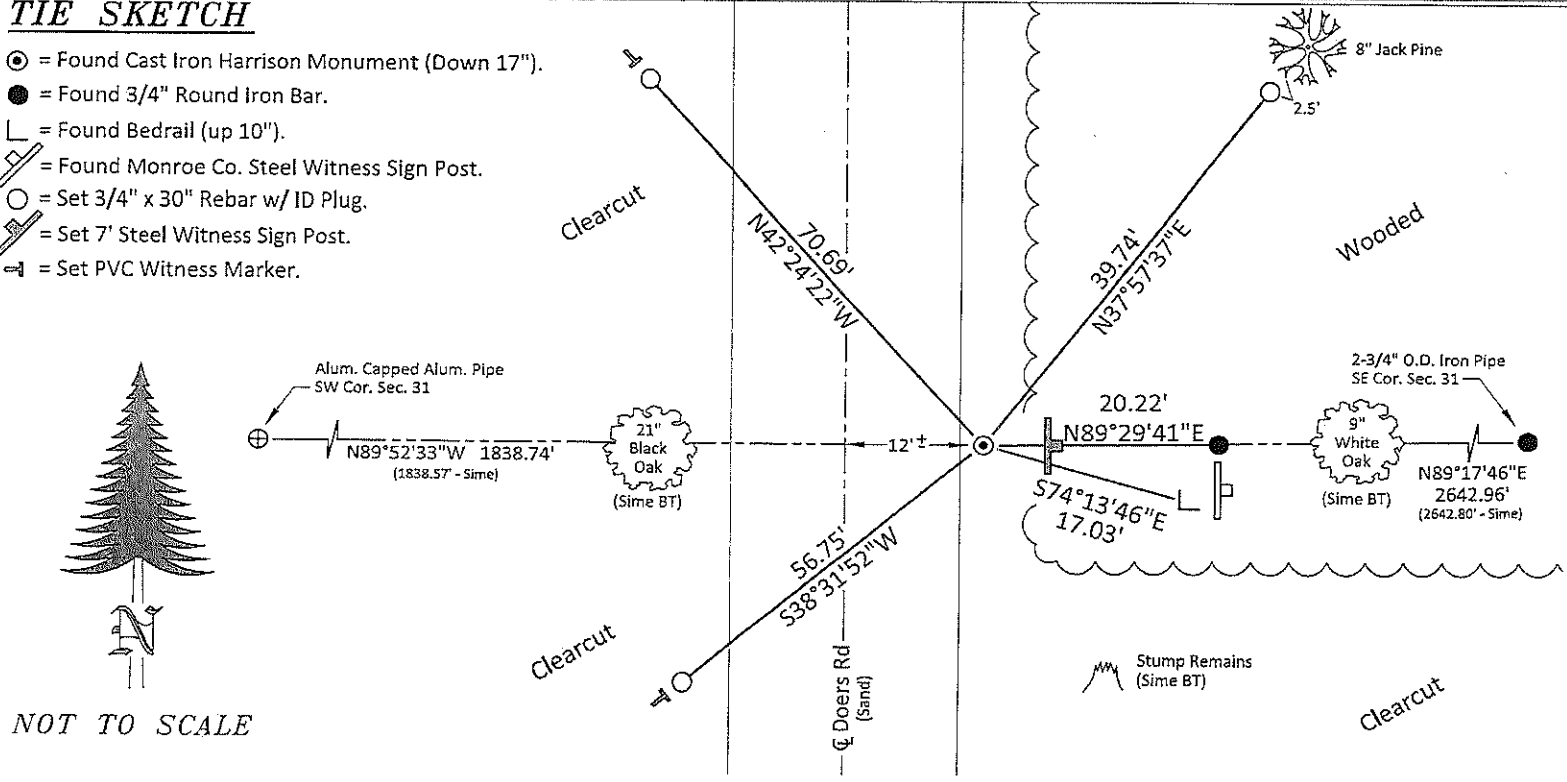
ETHAN D. REMUS
S-3075
BLACK RIVER FALLS, WI
LAND SURVEYOR

CERTIFIED CORRECT AND COMPLETE TO THE BEST OF MY KNOWLEDGE AND BELIEF:

Ethan D. Remus
Professional Land Surveyor
DATE: March 22, 2016

TIE SKETCH

- ⊙ = Found Cast Iron Harrison Monument (Down 17").
- = Found 3/4" Round Iron Bar.
- └ = Found Bedrail (up 10").
- ⊕ = Found Monroe Co. Steel Witness Sign Post.
- = Set 3/4" x 30" Rebar w/ ID Plug.
- ⊚ = Set 7' Steel Witness Sign Post.
- ⇨ = Set PVC Witness Marker.



NOT TO SCALE

CERTIFICATE

CERTIFIED LAND CORNER

No. 12

22001312020

I, Harley A. Sime, do hereby certify that on the 2nd day of May, 1980, I found (evidence) (~~no evidence~~) of the N¹/₄ corner of Section 6, T 19 N, R 1 W Fourth Principal Meridian, and I re-established said corner according to the Wisconsin Statutes as shown and described hereon.

History of corner establishment since Original Government Survey

Blencoe set a stone at this corner and a bedrail 16' East and 5' South of corner.

Description of corner evidence found:

Found Blencoe's bedrail, but could not find stone. Set corner by given distances and direction from Blencoe's notes off of his bedrail.

Dated this 5th day of Jan. 1981.

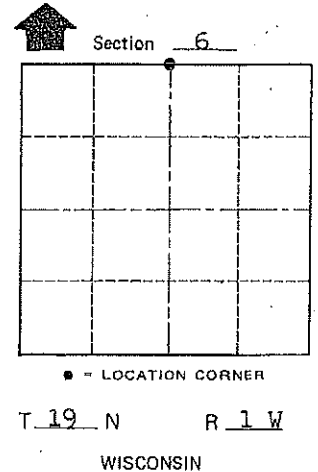
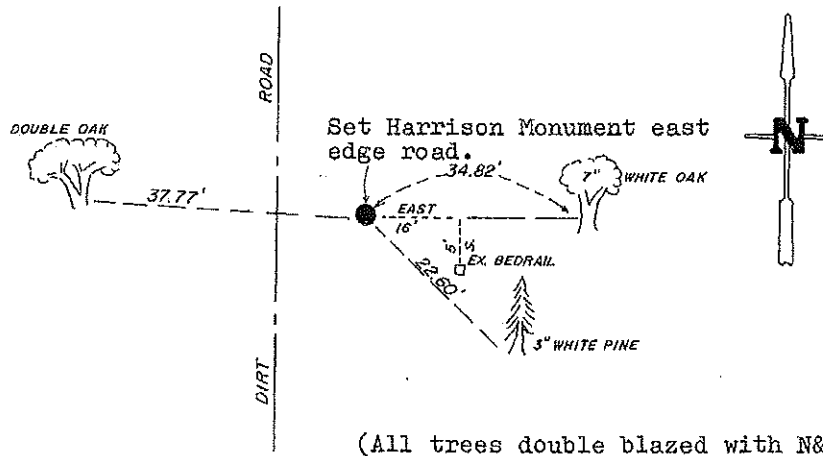
Approved: HARLEY A. SIME
MONROE CO. SURVEYOR

COUNTY SURVEYOR FORM NO. 1

Description of corner and witness monuments, references and accessories used to perpetuate the original or re-established location of this corner:

Witnesses to corner location:

G. Dechant
T. Tormoen
B. Meyer



(All trees double blazed with N&C's set)

SURVEY CONTROL ORDER

Horizontal	_____
Vertical	_____

WISCONSIN COORDINATE SYSTEM

Corner	East (X)	North (Y)	Elevation (Z)	Zone
Control Sta. Name				

City, Village or Town Lincoln
County of Monroe