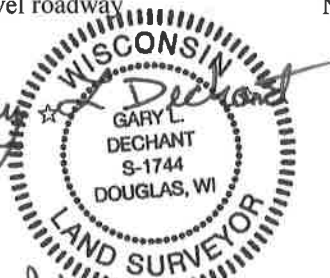


**U.S. PUBLIC LAND CORNER  
MAINTENANCE**

# 59

Corner ID: W1/4 Sec.13, T19N-R1W  
21901142000

| <u>DATE</u>                                                                                                | <u>CREW</u>                             | <u>MONUMENT INFO</u>                                                                                                                          | <u>Compass Bearing</u> | <u>Distance</u> |
|------------------------------------------------------------------------------------------------------------|-----------------------------------------|-----------------------------------------------------------------------------------------------------------------------------------------------|------------------------|-----------------|
| July 16, 2020                                                                                              | Zachariah P. Dechant<br>Gary L. Dechant | Set nail over Harrison, 2' east of center line of<br>CTH "N", on line with gravel roadway to the west<br>All previous ties gone or destroyed. |                        |                 |
| 1) Set 3/4"x24" round iron bar, down 6", 14' east of center line CTH "N"                                   |                                         |                                                                                                                                               | N10E                   | 50.67'          |
| 2) Set 2' section of T post, down 6", 13' east of center line of CTH "N"                                   |                                         |                                                                                                                                               | S18E                   | 41.82           |
| 3) Set 2' section of T post, down 6" in center of dike, 33' west of CTH "N"<br>36' south of gravel roadway |                                         |                                                                                                                                               | SW                     | 49.72'          |
| 4) Set 2' section of T post, down 6", 11' north of gravel roadway                                          |                                         |                                                                                                                                               | N80W                   | 57.31'          |

*Gary L. Dechant*  
  
*July 28, 2020*

Pg. 2

I, Garold A. Sime, do hereby certify that on the 22nd day of August 1986, I found (evidence) (~~not found~~) of the W/4 corner of Section 13, T 19 N, R 1 W Fourth Principal Meridian, and I re-established said corner according to the Wisconsin Statutes as shown and described hereon.

Dated this 29th day of Dec. 1986.

Garold A. Sime  
Deputy County Surveyor  
Title

History of corner establishment since Original Government Survey

\*See previous land corner record

Description of corner evidence found:

Found Harrison Monument with top broke off and previous ties gone. Established new ties of corner

See Reverse Side For Maintenance

Description of corner and witness monuments, references and accessories used to perpetuate the original or re-established location of this corner:

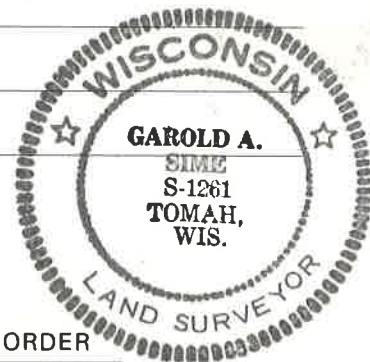
Ex. Harrison Monument at corner

Witnesses to corner location:

Garold A. Sime, R.L.S.

Dallas Wilhite

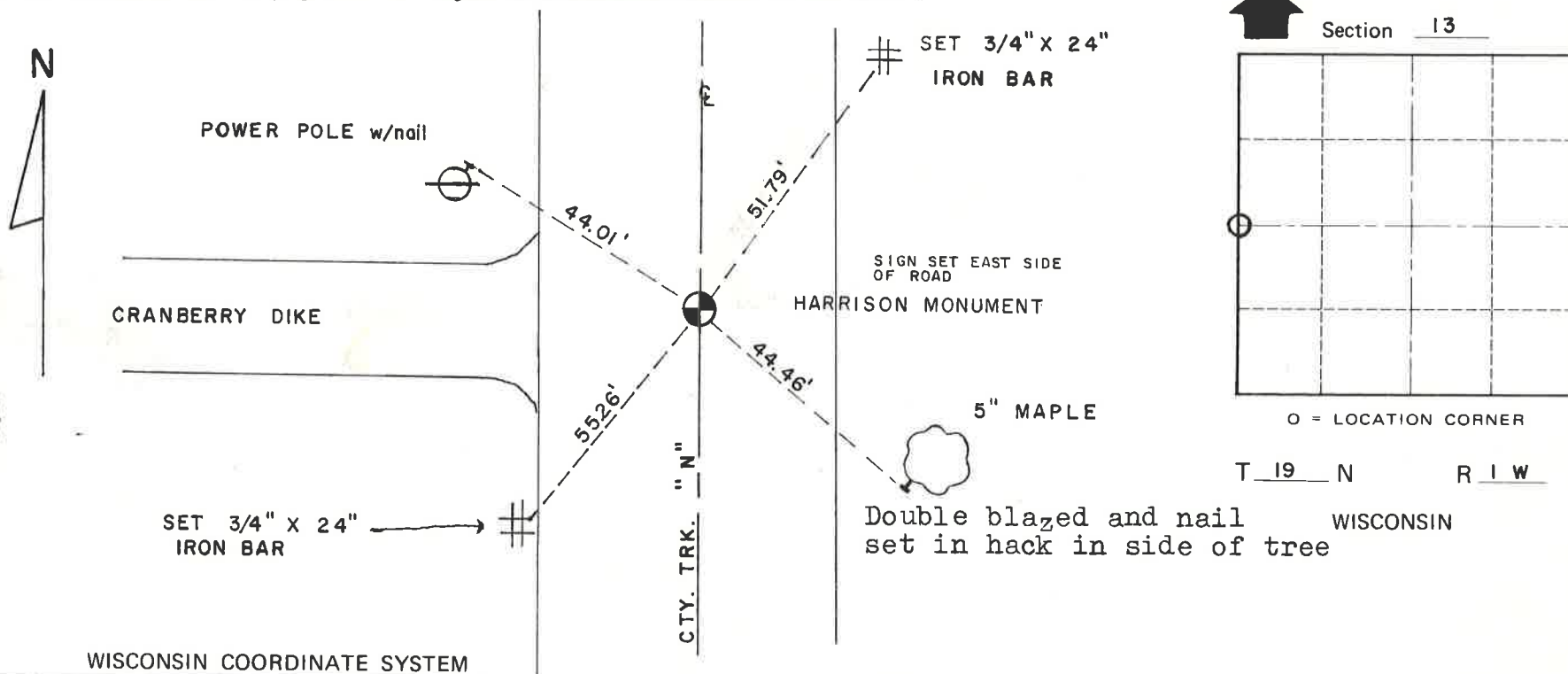
Bryan Meyer



SURVEY CONTROL ORDER

|            |       |
|------------|-------|
| Horizontal | _____ |
| Vertical   | _____ |

| Corner            | East (X) | North (Y) | Elevation (Z) | Zone |
|-------------------|----------|-----------|---------------|------|
| Control Sta. Name |          |           |               |      |



City or Town Lincoln

County of Monroe

COUNTY SURVEYOR FORM NO. 1

*PS. 1*

I, Harley A. Sime, do hereby certify that on the 1st day of October 1975, I found (evidence) ~~(no evidence)~~ of the East 1/4 corner of Section 14, T. 19 N, R. 1 W Fourth Principal Meridian, and I re-established said corner according to the Wisconsin Statutes as shown and described hereon.

Dated this 2nd day of March 1976.

History of original corner establishment:

**See Reverse Side  
For Maintenance**

Description of corner evidence found:

**Found a 3/4"x24" iron bar, set and used by D. Marten and F. Zietlow in previous surveys. Removed the bar and replaced it with a Harrison marker.**

County Surveyor **Approved: HARLEY A. SIME**  
Title **MONROE CO. SURVEYOR**

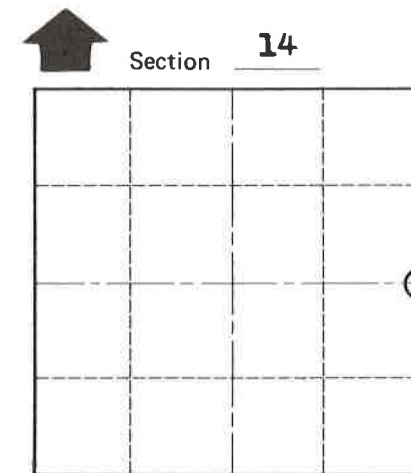
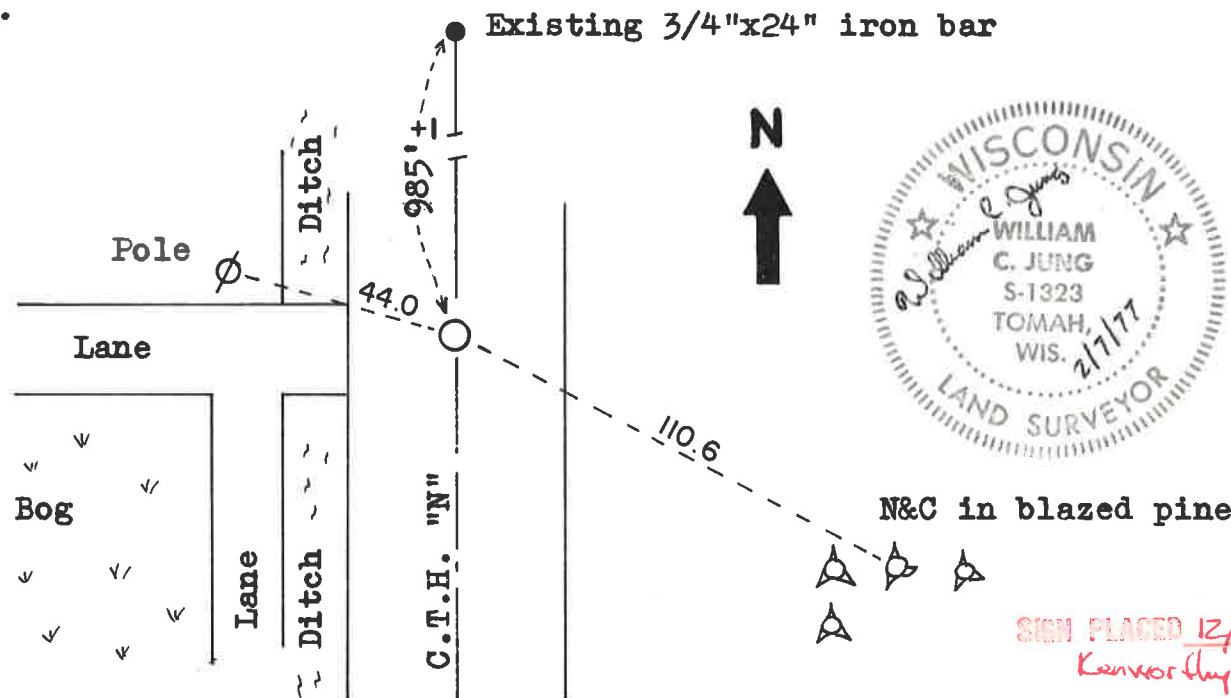
Description of corner and witness monuments, references and accessories used to perpetuate the original or re-established location of this corner:

**Set a Harrison in the road, down 1".**

Witnesses to corner location:

W.C. Jung-Chief *W.C. Jung*

A. Lueck



T 19 N R 1 W  
WISCONSIN

COUNTY SURVEYOR FORM NO. 1

SURVEY CONTROL ORDER

|            |       |
|------------|-------|
| Horizontal | _____ |
| Vertical   | _____ |

| WISCONSIN COORDINATE SYSTEM |          |           |               |      |
|-----------------------------|----------|-----------|---------------|------|
| Corner                      | East (X) | North (Y) | Elevation (Z) | Zone |
| Control Sta. Name           |          |           |               |      |

City, Village or Town Lincoln  
County of Monroe