

U.S. LAND CORNER MAINTENANCE

Corner ID : SE Sec.14 , T19N-R1W
21901140000

<u>DATE</u>	<u>CREW</u>	<u>MONUMENT TYPE</u> -----
June 13, 2013	Zachariah P.Dechant Gary L. Dechant	Existing Harrison at road intersection

References:

Set 1" iron pipe 8' SW of 20" white pine
Set 1" iron pipe in centerline dike, down 6"

Bearing
N43E
S43 W

Distance
66.13'
82.89'

NOTE: Harrison and 1" iron pipe set on straight line.



CERTIFICATE

CERTIFIED LAND CORNER

No. 63

21901140000

I, William C. Jung, do hereby certify that on the 18th day of November 19 77, I found (evidence) (~~no evidence~~) of the N.E. corner of Section 23, T 19 N, R 1 W Fourth Principal Meridian, and I re-established said corner according to the Wisconsin Statutes as shown and described hereon.

Dated this 25th day of Jan. 19 79.

William C. Jung, R.L.S. 1323
Crew Chief, County Surveyor's
Title Office

History of original corner establishment:

Holden shows an iron pipe at this corner in his notes of Jan. of 1902.

Description of corner evidence found:

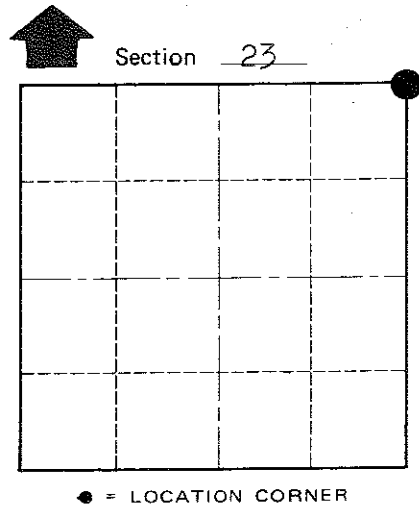
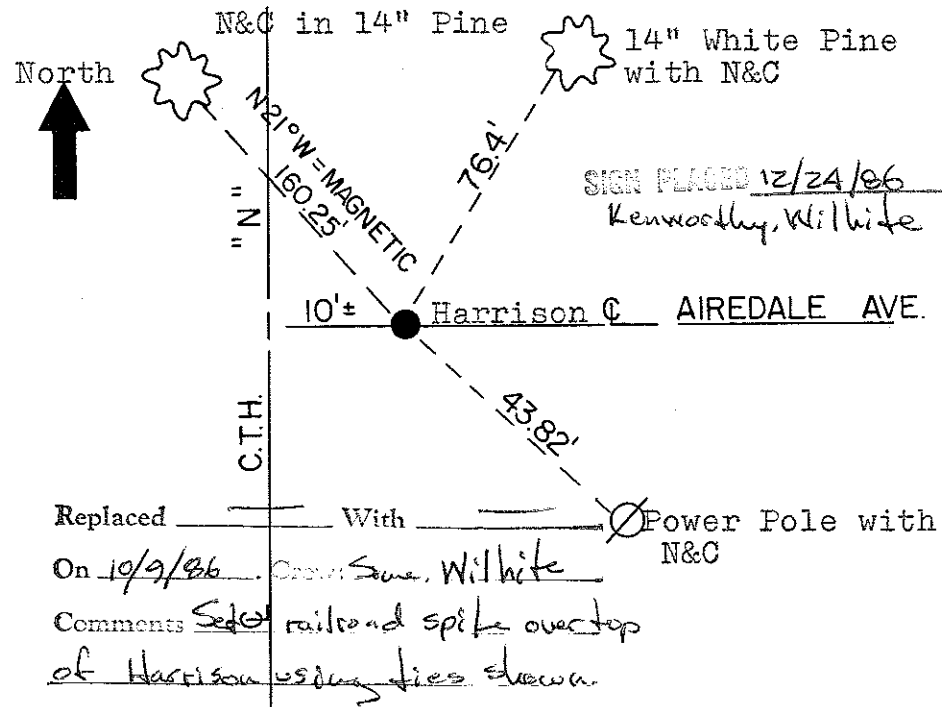
Found a 1" x 24" iron pipe down about 18". It was bent over. Set a 1" x 24" iron pipe in its place.

Replaced iron pipe with Harrison on May 26, 1978.

Description of corner and witness monuments, references and accessories used to perpetuate the original or re-established location of this corner:

Witnesses to corner location:

W. Jung
C. Pietz
G. Dechant



T 19 N R 1 W
WISCONSIN

Approved: Harley Sime
County Surveyor

SURVEY CONTROL ORDER	
Horizontal	_____
Vertical	_____

WISCONSIN COORDINATE SYSTEM				
Corner	East (X)	North (Y)	Elevation (Z)	Zone
Control Sta. Name				

City, Village or Town Lincoln
County of Monroe

COUNTY SURVEYOR FORM NO. 1