


**U.S. PUBLIC LAND CORNER
MAINTENANCE**

61

**Corner ID: SE Sec.13, T19N-R1W
21901130000**

<u>DATE</u>	<u>CREW</u>	<u>MONUMENT INFO</u>
July 31, 2020	Zachariah P. Dechant Gary L. Dechant	Found Harrison, top broke off, 14' west of fence corner, 1' south and 1' east of west end of gate, 10' east of east bank of north-south ditch. All previous ties gone, lots of ditching and dirt movement since last visit.
		<u>Compass Bearing</u> <u>Distance</u>
		1) Set 2' section of steel T post in center of dike N68E 90.95'
		2) Set 2' section of T' post at center of dike intersection S70E 85.10'
		3) Set 2' section of T post, 3' north of wood post of east-west fence N84W 64.55'
		4) Set 2' section of T post N40W 74.18'

Gary

August 4, 2020

I, Gary L. Dechant, do hereby certify that on the 8th day of November 19 86, I found ~~(evidence)~~ (no evidence) of the SE corner of Section 13, T19 N, R 1 W Fourth Principal Meridian, and I re-established said corner according to the Wisconsin Statutes as shown and described hereon.

Dated his 25th day of Nov. 19 86.

Gary L. Dechant
Registered Land Surveyor, S-1744
Title

History of corner establishment since Original Government Survey

Fred Holden was here in Jan. of 1902.

**See Reverse Side
For Maintenance**

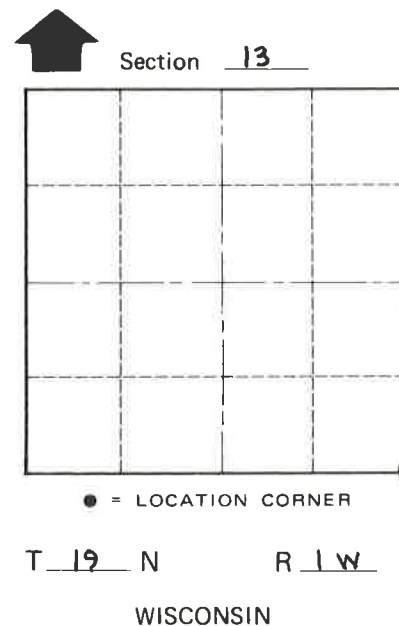
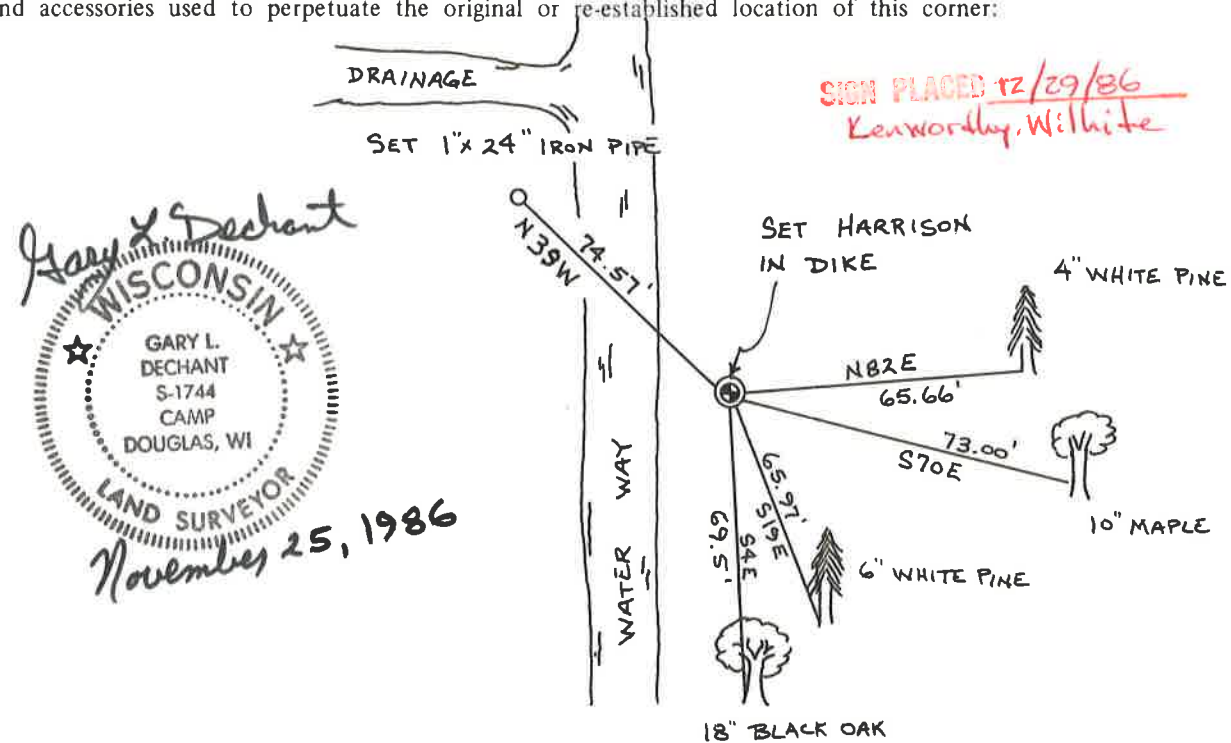
Description of corner evidence found:

Set on line and at a prorated distance between the SE corner of Section 24 and the NE corner of Section 13. The NE corner of said Section 13 though not yet set, is to be set by G. Sime. Received needed information from G. Sime concerning the location of the NE corner of Section 13 in order to finish my survey.

Description of corner and witness monuments, references and accessories used to perpetuate the original or re-established location of this corner:

Witnesses to corner location:

Gary L. Dechant



SURVEY CONTROL ORDER

Horizontal	_____
Vertical	_____

WISCONSIN COORDINATE SYSTEM

Corner	East (X)	North (Y)	Elevation (Z)	Zone
Control Sta. Name				

City, Village or Town LINCOLN
County of MONROE

COUNTY SURVEYOR FORM NO. 1