

41

**U.S. PUBLIC LAND CORNER
MAINTENANCE**

**Corner ID : SE Sec. 12, T19N-R1W
21901120000**

DATE	CREW	MONUMENT TYPE -----
May 26, 2016	Zachariah P.Dechant Gary L. Dechant	Found mag nail. Replaced mag nail with 3/4"x24" hexagon iron bar. Drove hex bar down 12". Set Railroad spike over iron bar. On south edge pavement of CTH "EW"

References:

	<u>Bearing</u>	<u>Distance</u>
1) Set 3/4"x24" round iron bar, down 6", 23' north of "EW"	N32E	38.78'
2) Set 3/4"x24" round iron bar, down 6", middle of roadway to cranberry beds	S20E	43.65"
3) Set 3/4"x24" round iron bar, down 6", middle of roadway to cranberry beds	S32W	110.89'
4) Set 3/4"x24" round iron bar, down 6", at center of gate north of "EW"	N20W	50.64'

3/4"hexagon iron bar(SE 12) and reference markers set on straight lines.



I, Garold A. Sime, do hereby certify that on the 18th day of December 1986, I found ~~(evidence)~~ (no evidence) of the NE corner of Section 13, T 19 N, R 1 W Fourth Principal Meridian, and I re-established said corner according to the Wisconsin Statutes as shown and described hereon.

Dated this 29th day of Dec. 1986.

Garold A. Sime
Deputy County Surveyor
Title

History of corner establishment since Original Government Survey

Kennedy was at this corner in Feb. 1937

Description of corner evidence found:

I established this corner on line with the centerline of C.T.H. "E" projected east and at a distance between the NW corner of Section 13 and the NE corner of Sec. 18-T19N-R1E prorated to the distance given by Kennedy between said corners

**See Reverse Side
For Maintenance**

COUNTY SURVEYOR FORM NO. 1

Description of corner and witness monuments, references and accessories used to perpetuate the original or re-established location of this corner:

Set 1 1/4" x 15" round iron bar at corner **N**

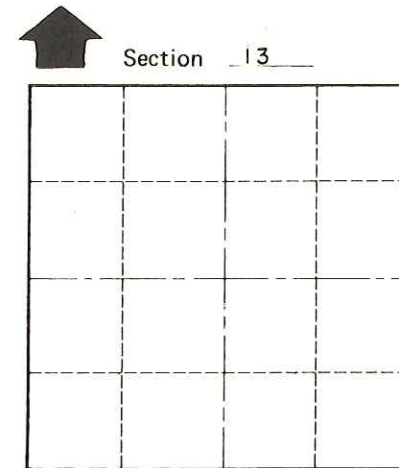
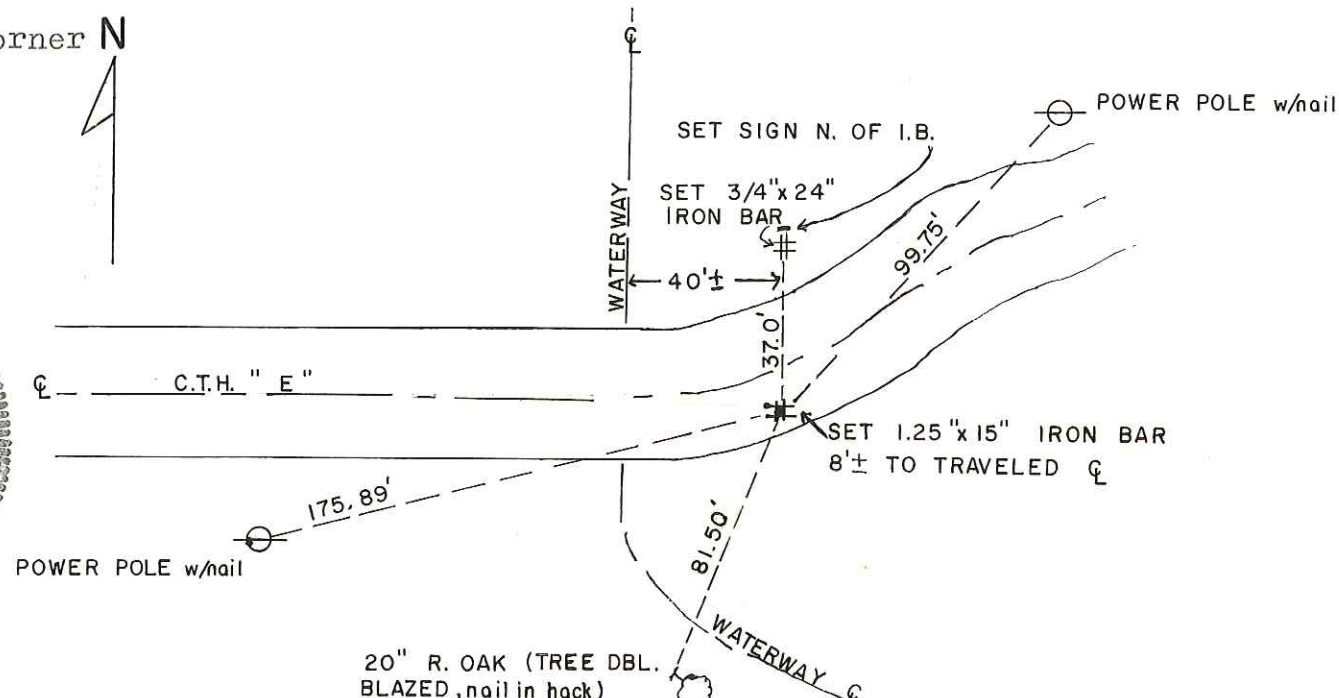
Witnesses to corner location:

Garold A. Sime, R.L.S.

Eric Jensen

Dallas Wilhite

John Kenworthy



O = LOCATION CORNER

T 19 N R 1 W

WISCONSIN

SURVEY CONTROL ORDER

Horizontal	_____
Vertical	_____

WISCONSIN COORDINATE SYSTEM

Corner	East (X)	North (Y)	Elevation (Z)	Zone
Control Sta. Name				

20" R. OAK (TREE DBL. BLAZED, nail in hack)

City, Village or Town Lincoln

County of Monroe