

**U.S. PUBLIC LAND CORNER
MAINTENANCE**

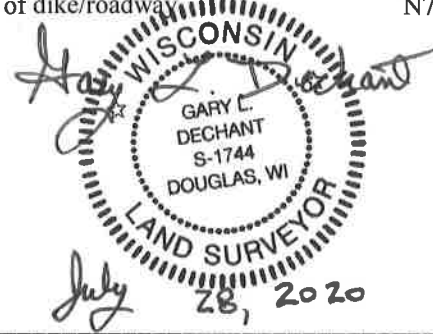
39

**Corner ID: E1/4 Sec.11, T19N-R1W
21901112000**

<u>DATE</u>	<u>CREW</u>	<u>MONUMENT INFO</u>
July 15, 2020	Zachariah P. Dechant Gary L. Dechant	Corner of record and all ties destroyed. Reset corner from previous survey in Section 12 shown on section summary dated January 31, 1987. Set 1' spike as corner on South bank of cranberry bed.

<u>Compass Bearing</u>	<u>Distance</u>
------------------------	-----------------

- | | | |
|--|-------|--------|
| 1) Set 3/4"x24" round iron bar, south on section line | South | 7.12' |
| 2) Set 2' section of T post, center of dike | S60E | 38.64' |
| 3) Set 2' section of T post, at PI of cranberry bed gravel roadway | S31W | 49.30' |
| 4) Set 2' section of T post, down 6", 16' west of dike/roadway | N70W | 46.36' |



I, William C. Jung, do hereby certify that on the 9th day of July 1980, I found (evidence) ~~(no evidence)~~ of the E 1/4 corner of Section 11, T 19 N, R 1 W Fourth Principal Meridian, and I re-established said corner according to the Wisconsin Statutes as shown and described hereon.

Dated this 19th day of Jan. 1981.

William C. Jung

William C. Jung, R.L.S. 1323
Title

History of corner establishment since Original Government Survey

No known recorded history since the original government survey.

Description of corner evidence found:

Found an unrecorded pipe at this corner. After field work and computations, it fit conditions well and was accepted as the corner. Was this corner set by Jimmy Carroll? It fits the East line of the section very well.

See Reverse Side For Maintenance

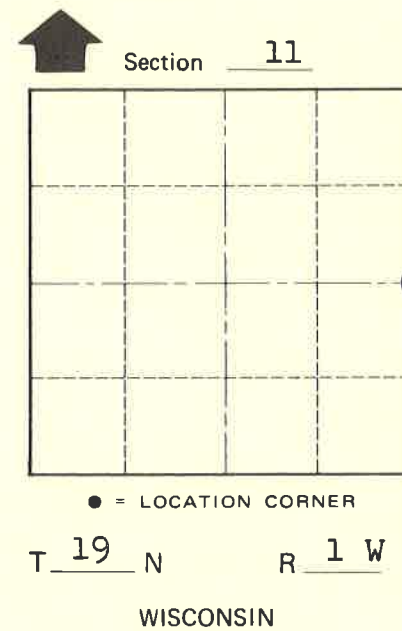
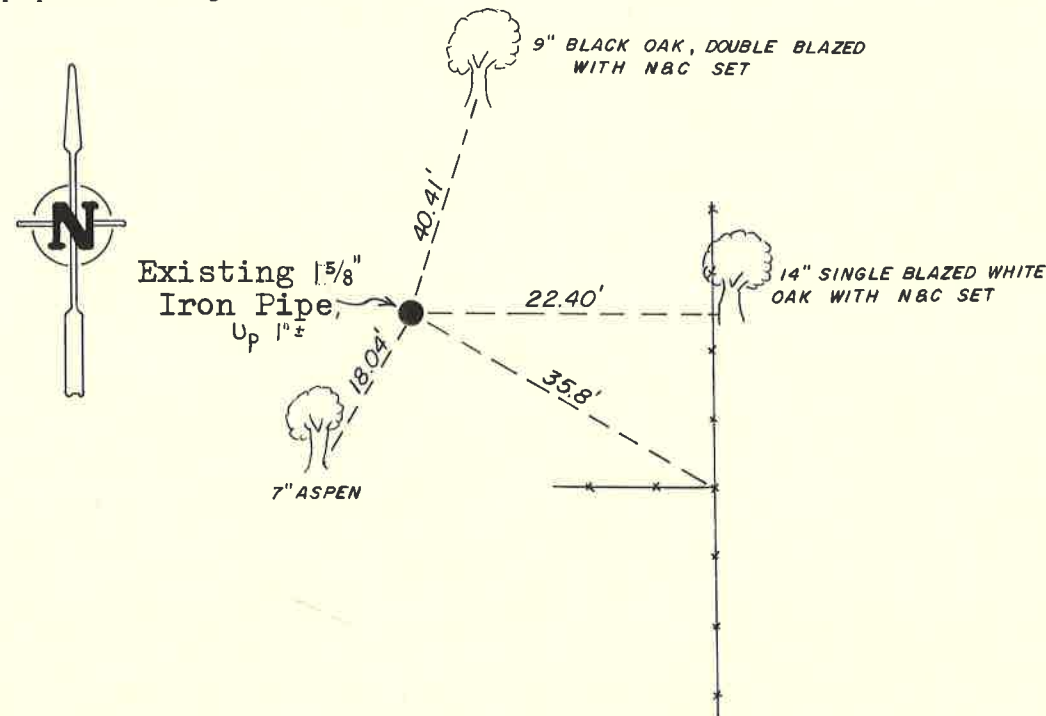
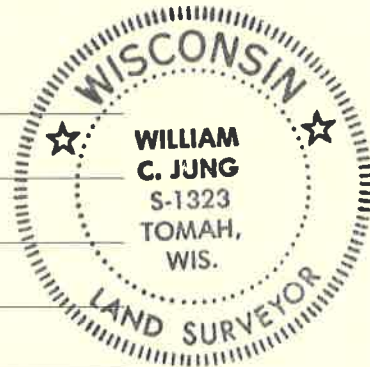
Description of corner and witness monuments, references and accessories used to perpetuate the original or re-established location of this corner:

Witnesses to corner location:

W. Jung

G. Dechant

C. Dade



**Approved: HARLEY A. SIME
MONROE CO. SURVEYOR**

SURVEY CONTROL ORDER

Horizontal _____
Vertical _____

WISCONSIN COORDINATE SYSTEM

Corner	East (X)	North (Y)	Elevation (Z)	Zone
Control Sta. Name				

City, Village or Town Lincoln
County of Monroe

COUNTY SURVEYOR FORM NO. 1