

# 46

**U.S. PUBLIC LAND CORNER  
MAINTENANCE**

**Corner ID :** S1/4 Sec. 10, T19N-R1W

**21901100020**

<u>DATE</u>	<u>CREW</u>	<u>MONUMENT TYPE -----</u>
May 26, 2016	Zachariah P.Dechant Gary L. Dechant	Replaced bent 1/4" round iron bar with 1/4"x18" iron pipe. Drove pipe down 12" in CTH "EW"

References:

	<u>Bearing</u>	<u>Distance</u>
1) Existing 1" iron pipe, lowered 6"	N18E	39.97' (40.07)
2) Set 3/4"x3' iron pipe, 2' north of fence	S24E	47.80'
3) Existing 3/4" round iron bar 3' north of fence	S17W	46.62' (46.54)
4) Set 3/4"x24"round iron bar, down 6", 4' east of 8" Maple	N24W	56.41

1/4" iron pipe and reference markers 2 & 4 set on straight lines.



I, Harley A. Sime, do hereby certify that on the 1st day of October 1975, I found ~~evidence~~ (no evidence) of the South 1/4 corner of Section 10, T 19 N, R 1 W Fourth Principal Meridian, and I re-established said corner according to the Wisconsin Statutes as shown and described hereon.

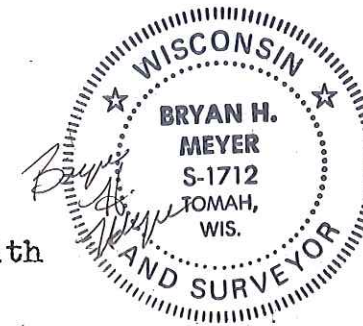
Dated this 2nd day of March 19 76.

History of original corner establishment:  
Since this corner was monumented by Harley Sime in October of 1975, this corner has been used in numerous surveys. The County Surveyor's Office was contacted by Norb Smith, Monroe County Highway Commissioner in the spring of 1992. He informed us that this portion of C.T.H. "E" was to be upgraded and repaved. The Harrison marker was removed July 7, 1992.

Description of corner evidence found:

Set the corner on line between the section corners and on line with existing line fence to the South.

UPDATE: Following construction, this corner was reset with a 1 1/4"x30" round iron bar in the new hot-mix paving. This corner was reset using the two iron pipes shown. Did not verify any of the other ties. (The two pipes shown were set at the time the Harrison was removed.)



Bryan H. Meyer  
H. A. Sime and Associates  
P. O. Box 705  
Tomah, Wisconsin 54660  
Phone: (608)-372-5392

County Surveyor  
Title

Description of corner and witness monuments, references and accessories used to perpetuate the original or re-established location of this corner:

Set a Harrison marker in the road, down 1".

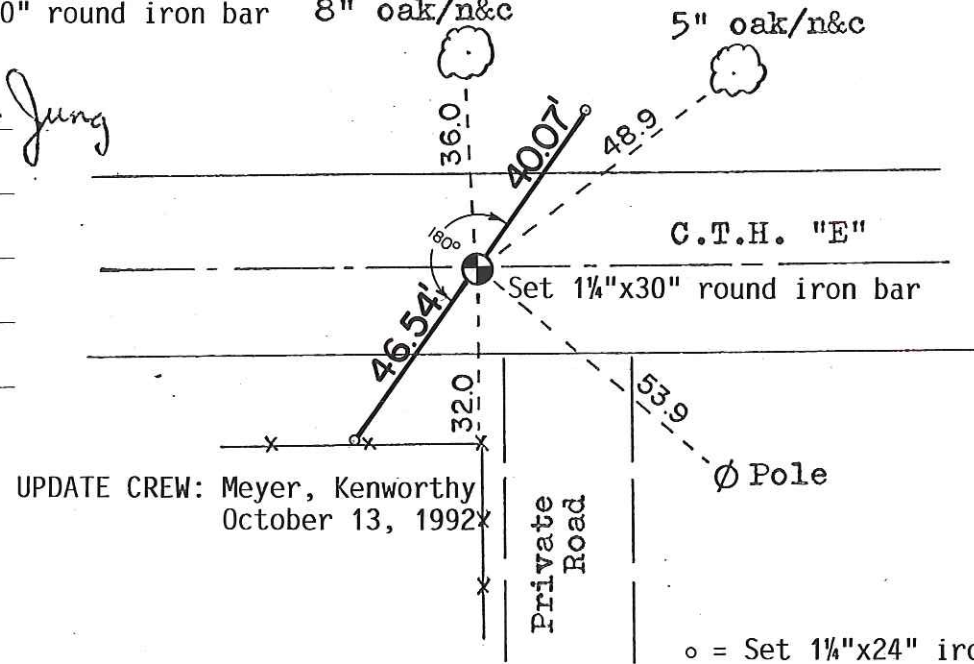
UPDATE: Removed Harrison; set 1 1/4"x30" round iron bar 8" oak/n&c

Witnesses to corner location:

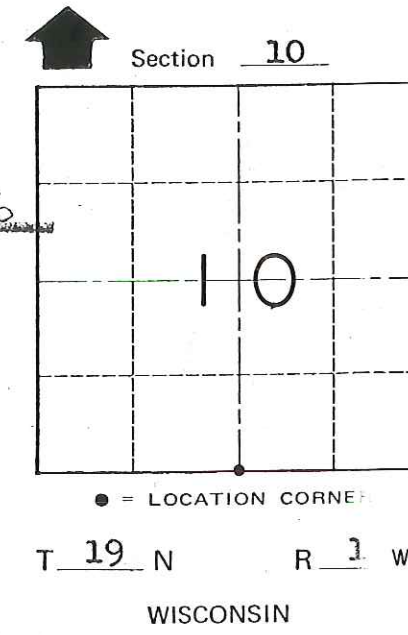
W.C. Jung-Crew Chief *W.C. Jung*

A. Lueck

**See Reverse Side  
For Maintenance**



UPDATE CREW: Meyer, Kenworthy  
October 13, 1992



SURVEY CONTROL ORDER

Horizontal	_____
Vertical	_____

WISCONSIN COORDINATE SYSTEM

Corner	East (X)	North (Y)	Elevation (Z)	Zone
Control Sta. Name				

City, Village or Town Lincoln  
County of Monroe

COUNTY SURVEYOR FORM NO. 1



I, Harley A. Sime, do hereby certify that on the 1st day of October 1975, I found ~~(evidence)~~ (no evidence) of the South 1/4 corner of Section 10, T 19 N, R 1 W Fourth Principal Meridian, and I re-established said corner according to the Wisconsin Statutes as shown and described hereon.

Dated this 2nd day of March 1976.

History of original corner establishment:

**See Reverse Side  
For Maintenance**

Description of corner evidence found:

**Set the corner on line between the section corners and on line with the existing line fence to the South.**

County Surveyor **Approved: HARLEY A. SIME**  
Title **MONROE CO. SURVEYOR**

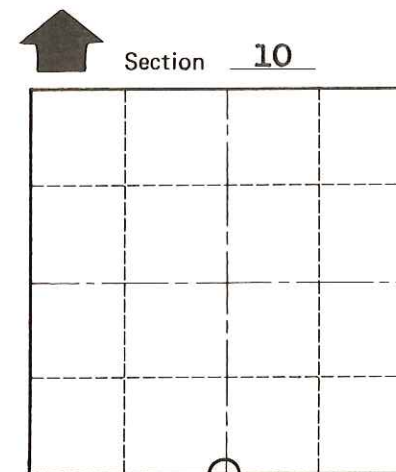
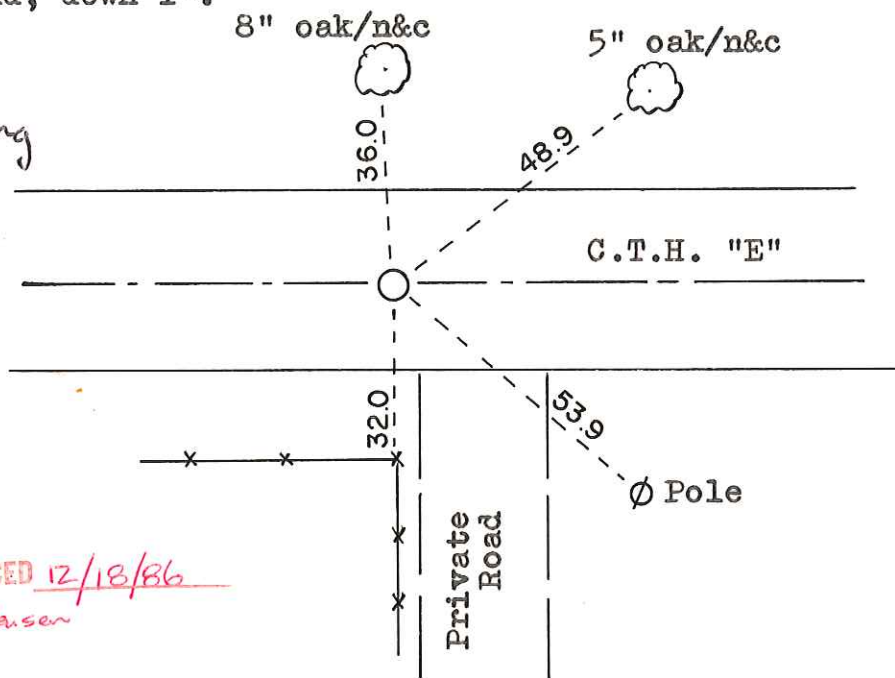
Description of corner and witness monuments, references and accessories used to perpetuate the original or re-established location of this corner:

**Set a Harrison marker in the road, down 1".**

Witnesses to corner location:

W.C. Jung-Chief *W.C. Jung*

A. Lueck



O = LOCATION CORNER  
T 19 N R 1 W  
WISCONSIN

SURVEY CONTROL ORDER

Horizontal	_____
Vertical	_____

WISCONSIN COORDINATE SYSTEM

Corner	East (X)	North (Y)	Elevation (Z)	Zone
Control Sta. Name				

City, Village or Town Lincoln

County of Monroe

COUNTY SURVEYOR FORM NO. 1