

45

**U.S. PUBLIC LAND CORNER
MAINTENANCE**

**Corner ID : SE Sec. 10, T19N-R1W
21901100000**

DATE	CREW	MONUMENT TYPE -----
May 25, 2016	Zachariah P. Dechant Gary L. Dechant	Existing 1/4" iron pipe center of CTH "EW" In line with fence to north

References:

	<u>Bearing</u>	<u>Distance</u>
1) Set 3/4"x24" round iron bar, down 6", 6' west of 3" White Pine	N26E	60.38'
2) Set 3/4"x24" round iron bar, down 6", 6' north of 16" Scorch Pine	S14E	55.50'
3) Set 3/4"x24" round iron bar, down 6"	S26W	51.25'
4) Set 3/4"x24" round iron bar, down 6"	N14W	47.65'

1/4" iron pipe and reference markers set on straight lines.



I, Harley A. Sime, do hereby certify that on the 1st day of October 1975, I found (evidence) ~~no evidence~~ of the Southeast corner of Section 10, T 19 N, R 1 W, Fourth Principal Meridian, and I re-established said corner according to the Wisconsin Statutes as shown and described hereon.

Dated this 2nd day of March 1976.

County Surveyor
Title

History of original corner establishment:
Since this corner was monumented by Harley Sime in October of 1975, this corner has been used in numerous surveys. The County Surveyor's Office was contacted by Norb Smith, Monroe County Highway Commissioner in the Spring of 1992. He informed us that this portion of C.T.H. "E" was to be upgraded and repaved. The Harrison marker was removed July 7, 1992
Description of corner evidence found:

Found a large nail, set and used in a previous survey by F. Zietlow. Removed the nail and replaced it with a Harrison marker. Zietlow set this corner by best available field evidence.

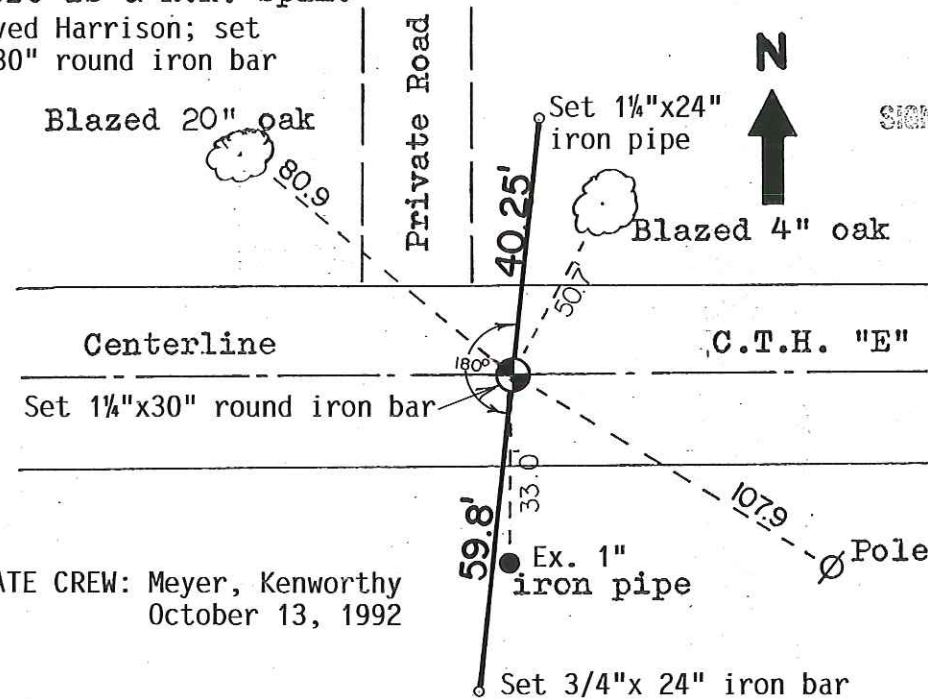
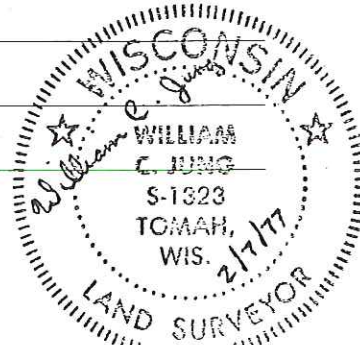
UPDATE: Following construction, this corner was reset with a 1/4"x30" round iron bar in the new hot-mix paving. This corner was reset using the 1/4" iron pipe and the 3/4" iron bar shown (these two monuments were set at the time the Harrison was removed). Did not verify the other tie distances.

Description of corner and witness monuments, references and accessories used to perpetuate the original or re-established location of this corner:

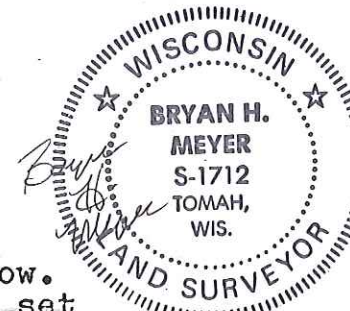
Set a Harrison marker in the road. There is a R.R. spike hole 1.93 feet to the West. UPDATE: Removed Harrison; set 1/4"x30" round iron bar

Witnesses to corner location:

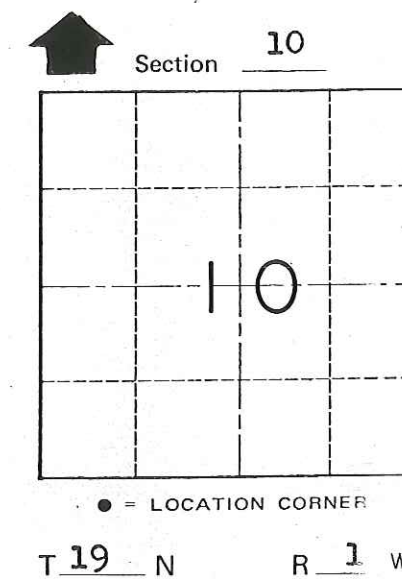
W.C. Jung-Crew Chief *W.C. Jung*
A. Lueck



UPDATE CREW: Meyer, Kenworthy
October 13, 1992



Bryan H. Meyer
H. A. Sime and Associates
P. O. Box 705
Tomah, Wisconsin 54660
Phone: (608)-372-5392



See Reverse Side
For Maintenance

SURVEY CONTROL ORDER

Horizontal _____
Vertical _____

WISCONSIN COORDINATE SYSTEM

Corner	East (X)	North (Y)	Elevation (Z)	Zone
Control Sta. Name				

City, Village or Town Lincoln
County of Monroe

COUNTY SURVEYOR FORM NO. 1

I, Harley A. Sime, do hereby certify that on the 1st day of October 1975, I found (evidence) (~~no evidence~~) of the Southeast corner of Section 10, T 19 N, R 1 W, Fourth Principal Meridian, and I re-established said corner according to the Wisconsin Statutes as shown and described hereon.

Dated this 2nd day of March 1976.

History of original corner establishment:

Description of corner evidence found:

**See Reverse Side
For Maintenance**

Found a large nail, set and used in a previous survey by F. Zietlow. Removed the nail and replaced it with a Harrison marker. Zietlow set this corner by best available field evidence.

County Surveyor

Title **Approved: HARLEY A. SIME**
MONROE CO. SURVEYOR

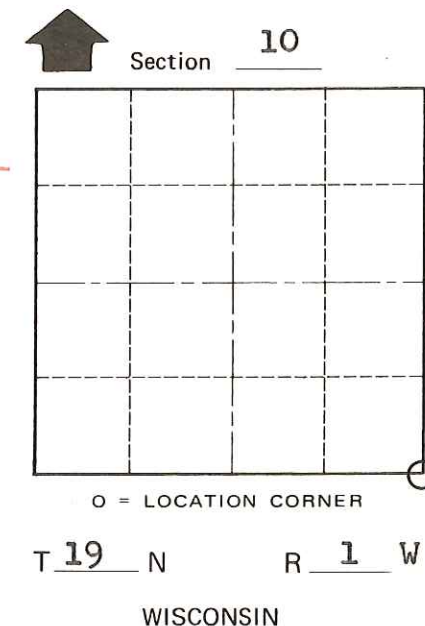
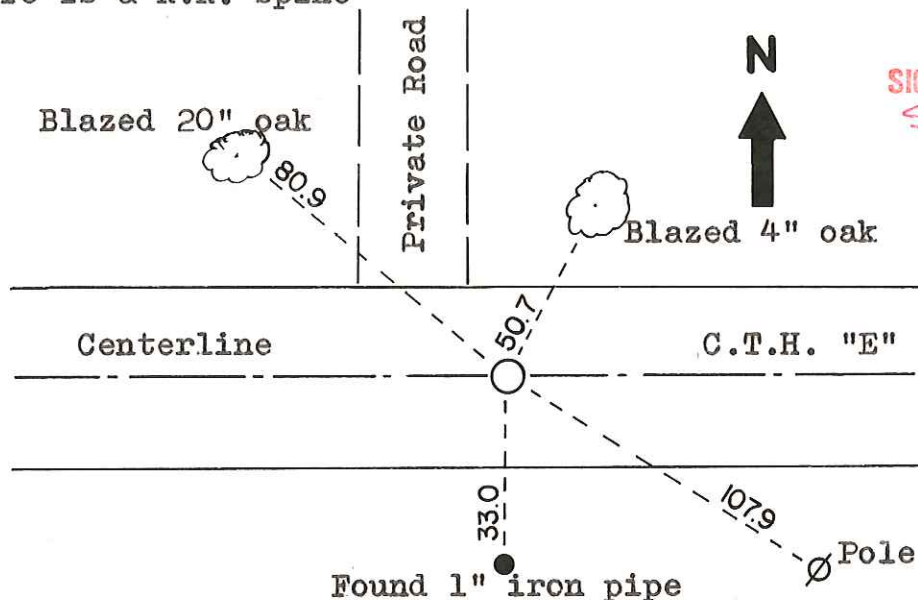
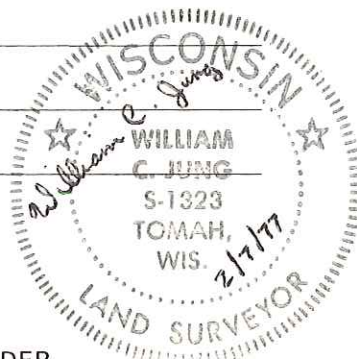
Description of corner and witness monuments, references and accessories used to perpetuate the original or re-established location of this corner:

Set a Harrison marker in the road. There is a R.R. spike hole 1.93 feet to the West.

Witnesses to corner location:

W.C. Jung-Chief *W.C. Jung*

A. Lueck



SURVEY CONTROL ORDER

Horizontal	_____
Vertical	_____

WISCONSIN COORDINATE SYSTEM

Corner	East (X)	North (Y)	Elevation (Z)	Zone
Control Sta. Name				

City, Village or Town Lincoln

County of Monroe

COUNTY SURVEYOR FORM NO. 1