

47

U.S. PUBLIC LAND CORNER MAINTENANCE

Corner ID : SE Sec.9, T19N-R1W

21901090000

DATE	CREW	MONUMENT TYPE -----
April 23, 2014	Zachariah P.Dechant Gary L. Dechant	Corner destroyed. 1 1/4" iron pipe 79.11 south only reference remaining. Reset from remaining reference corner and previous surveys & NE & E 1/4 Sec. 9. 9' west & 28' north of street intersection. Reset with 12" spike

References:

	<u>Bearing</u>	<u>Distance</u>
1) Existing 3/4" round iron bar on edge of woods, drove down 4"	N41E	132.61'
2) Set 3/4"x24' hex iron bar, 2' north of high woven wire fence 45' east of middle of gate	S38E	72.97'
3) Existing 1 1/4" iron pipe, 20' south of woven wire fence in drive	South	79.11'
4) Set 3/4"x24" hex iron bar 2' north of high woven wire fence 59' west of middle of gate	S41W	83.79'
5) Set 3/4"x24" hex iron bar, down 4", between two 8" Spruce	N38W	55.94

COORDINATES:

NOTE: Reference markers 1 & 4 and 2 & 5 and Harrison set on straight lines



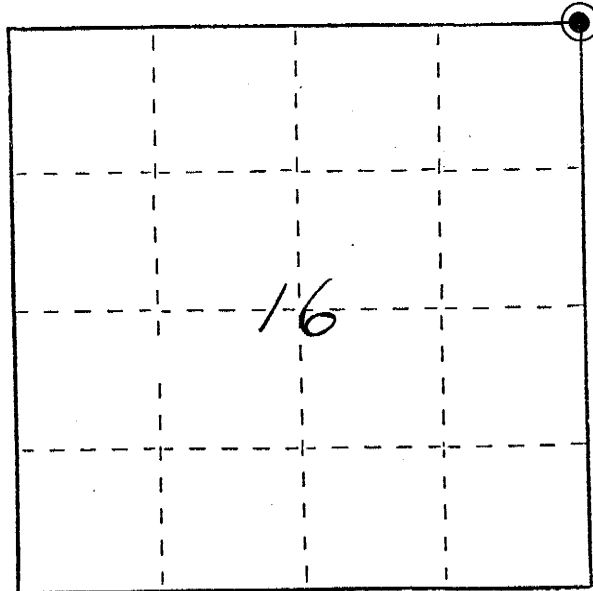
U. S. PUBLIC LAND SURVEY MONUMENT RECORD

INSTRUCTIONS: This record shall show the location of the corner and shall include all of the following nine elements (a through i).

- (a) Identify the corner by reference to the U.S. public land survey system.

⊙ = Corner monument restored.

Northeast corner of Section 16, T19N, R1W, Fourth Principal Meridian, Town of Lincoln, Monroe County, Wisconsin.

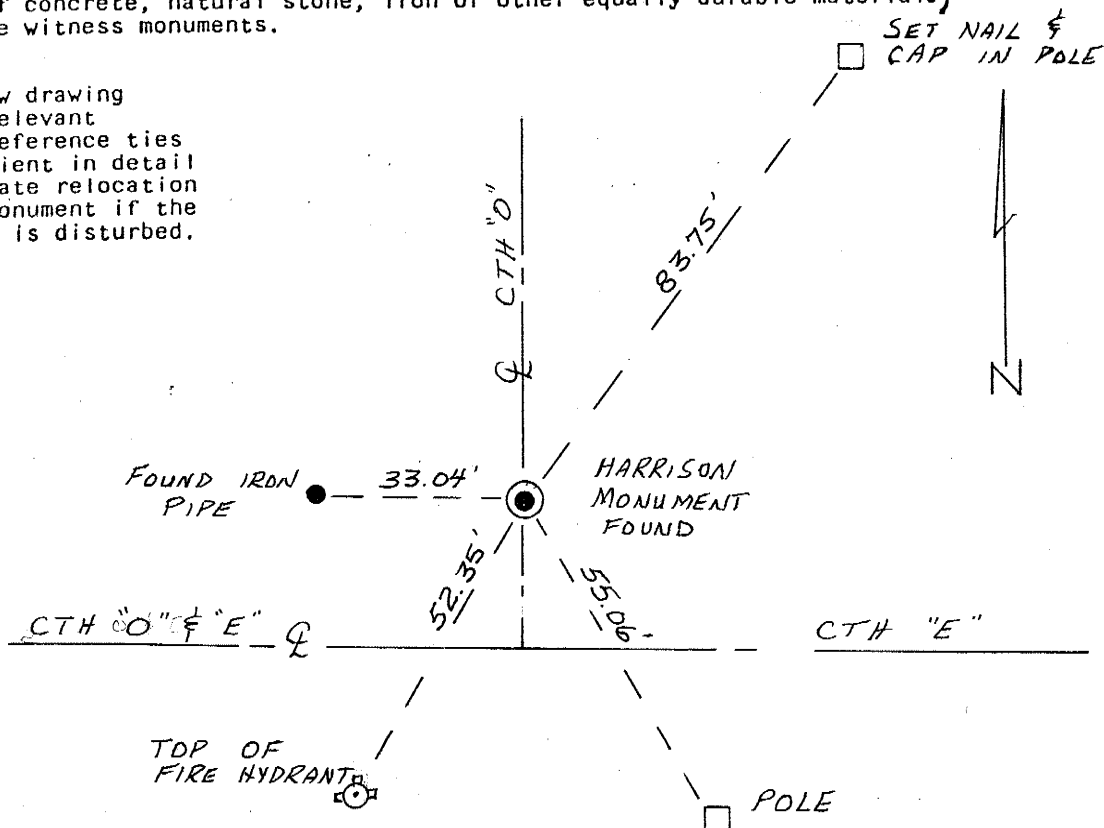


- (b) Describe any record evidence, monument evidence, occupational evidence, testimonial evidence or any other material evidence you considered, and whether the monument was found or placed.

The Harrison monument at this corner and three witness monuments were found on March 30, 1993 by Michael L. Deems. (See previous Certified Land Corner record by Harley A. Sime dated March 2, 11976). One additional witness monument was set as shown below.

- (c) In the plan view drawing below, provide reference ties to at least 4 witness monuments, or, if the location is within a municipality, to at least 2 witness monuments. (Witness monuments shall be made of concrete, natural stone, iron or other equally durable material.) Describe witness monuments.

- (d) Show a plan view drawing depicting the relevant monuments and reference ties which is sufficient in detail to enable accurate relocation of the corner monument if the corner monument is disturbed. Indicate north.



21901090000

(e) Describe any material discrepancy between the location of the corner as restored or reestablished and the location of that corner as previously restored or reestablished by distance and direction. Show the discrepancy on the plan view drawing under (d), above. Show the distances between the corner as previously restored or reestablished and (1) the corner as restored or reestablished, and (2) to at least 2 of the witness monuments shown on the drawing in (d), above.

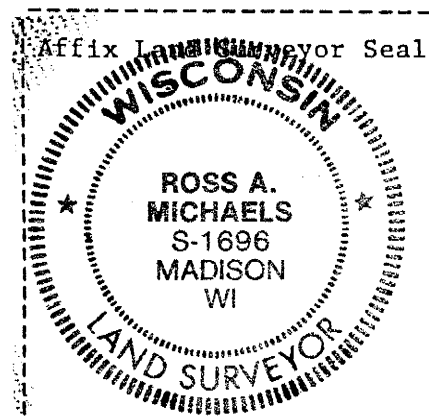
No known discrepancies.

(f) Was the corner restored through acceptance of (1) an obliterated evidence location, or, (2) a found perpetuated location?

A found perpetuated location.

(g&h) Was the corner reestablished through lost corner proportionate methods? If so, show the method, including the directions and distances to other public land survey corners used as evidence or used for proportioning in determining the corner location?

Not a lost corner.



(i) I, Ross A. Michaels
(type or print name) certify that the corner location shown on this record was determined by me or under my direction and control and that this U.S. Public Land Survey Monument Record is correct and complete to the best of my knowledge and belief.

Ross A. Michaels

Oct. 22, 1993

See New Sheet

I, Harley A. Sime, do hereby certify that on the 1st day of October 1975, I found (evidence) (~~no evidence~~) of the Southeast corner of Section 9, T 19 N, R 1 W Fourth Principal Meridian, and I re-established said corner according to the Wisconsin Statutes as shown and described hereon.

History of original corner establishment:

The January, 1894 Plat of Warrens, shows this corner as a 4x4 oak post. The old R.R. R/W maps also make reference to this corner.

Description of corner evidence found:

Found a 1" iron pipe that had been used in several previous surveys. Removed the pipe and replaced it with a Harrison marker.

This corner as set fits the old plat and the R.R. maps very well.

Set a nail and cap over the top of the marker in November of 1977.

Dated this 2nd day of March 19 76.

County Surveyor

Title

(Sheet updated on January 11, 1978.)

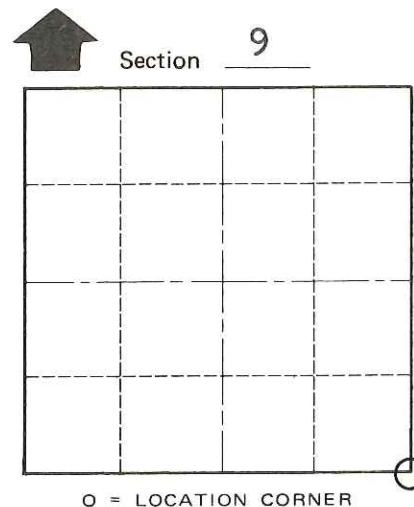
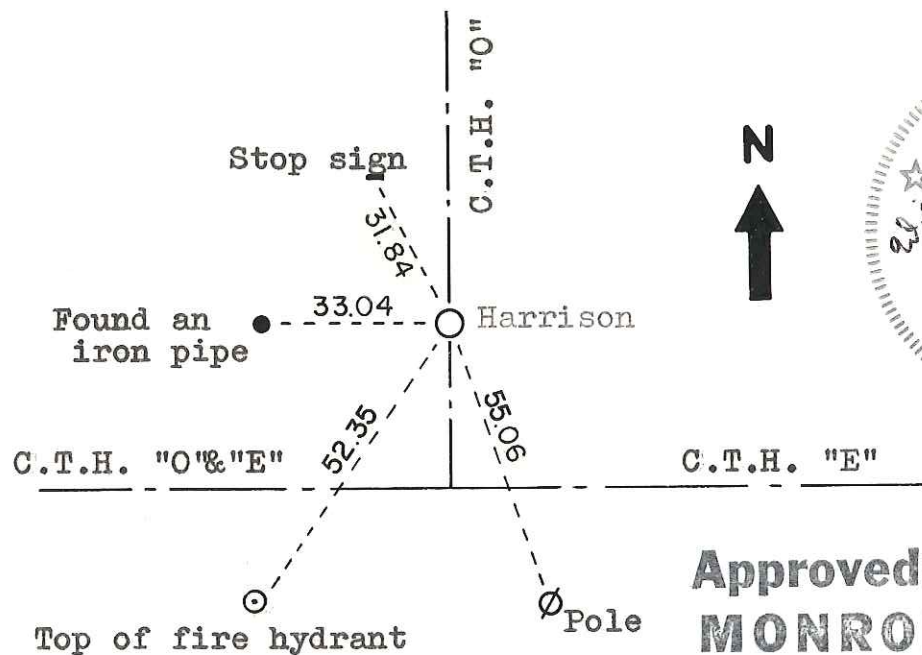
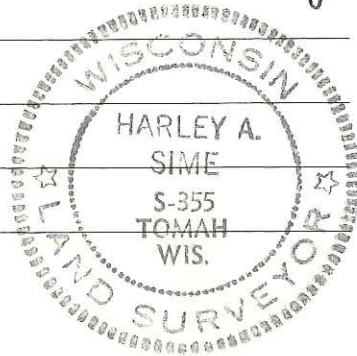
Description of corner and witness monuments, references and accessories used to perpetuate the original or re-established location of this corner:

Set a Harrison in the road, down 6".

Witnesses to corner location:

W.C. Jung-Chief *W.C. Jung*

A. Lueck



O = LOCATION CORNER

T 19 N R 1 W

**Approved: HARLEY A. SIME
MONROE CO. SURVEYOR**

WISCONSIN

SURVEY CONTROL ORDER

Horizontal	_____
Vertical	_____

WISCONSIN COORDINATE SYSTEM

Corner	East (X)	North (Y)	Elevation (Z)	Zone
Control Sta. Name				

City, Village or Town Lincoln

County of Monroe

COUNTY SURVEYOR FORM NO. 1

I, Harley A. Sime, do hereby certify that on the 1st day of October 1975, I found (evidence) ~~of the~~ Southeast corner of Section 9, T 19 N, R 1 W Fourth Principal Meridian, and I re-established said corner according to the Wisconsin Statutes as shown and described hereon.

Dated this 2nd day of March 1976.

County Surveyor

Title

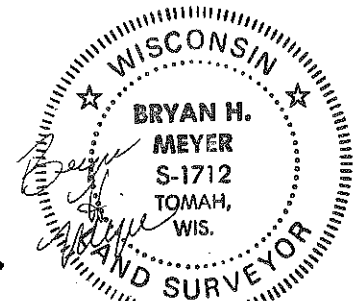
History of original corner establishment:

The January, 1894 Plat of Warrens, shows this corner as a 4x4 oak post. The old R.R. R/W maps also make reference to this corner. UPDATE: The County Surveyor's Office was contacted by Norb Smith, Monroe County Highway Commissioner, that this portion of C.T.H. "E" was to be upgraded and repaved. The Harrison marker was removed July 7, 1992.

Description of corner evidence found:

Found a 1" iron pipe that had been used in several previous surveys. Removed the pipe and replaced it with a Harrison marker.

This corner as set fits the old plat and the R.R. maps very well. UPDATE: Following construction, this corner was reset with a 1 1/4"x30" round iron bar in the new hot-mix paving. This corner was reset using the nail & cap and the 1 1/4" iron pipe shown. Did not verify any of the other ties or distances to them. (The nail and cap and the 1 1/4" iron pipe shown were set at the time the Harrison



Bryan H. Meyer
H. A. Sime and Associates
P. O. Box 705
Tomah, Wisconsin 54660
Phone: (608)-372-5392

(Sheet updated on January 11, 1978, was removed).

Description of corner and witness monuments, references and accessories used to perpetuate the original or re-established location of this corner:

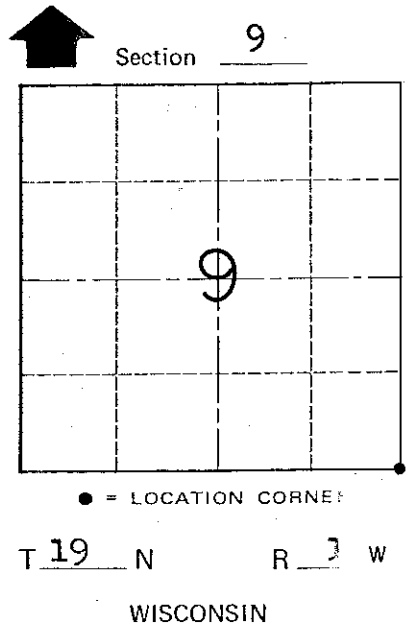
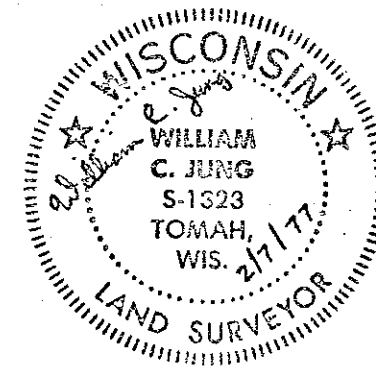
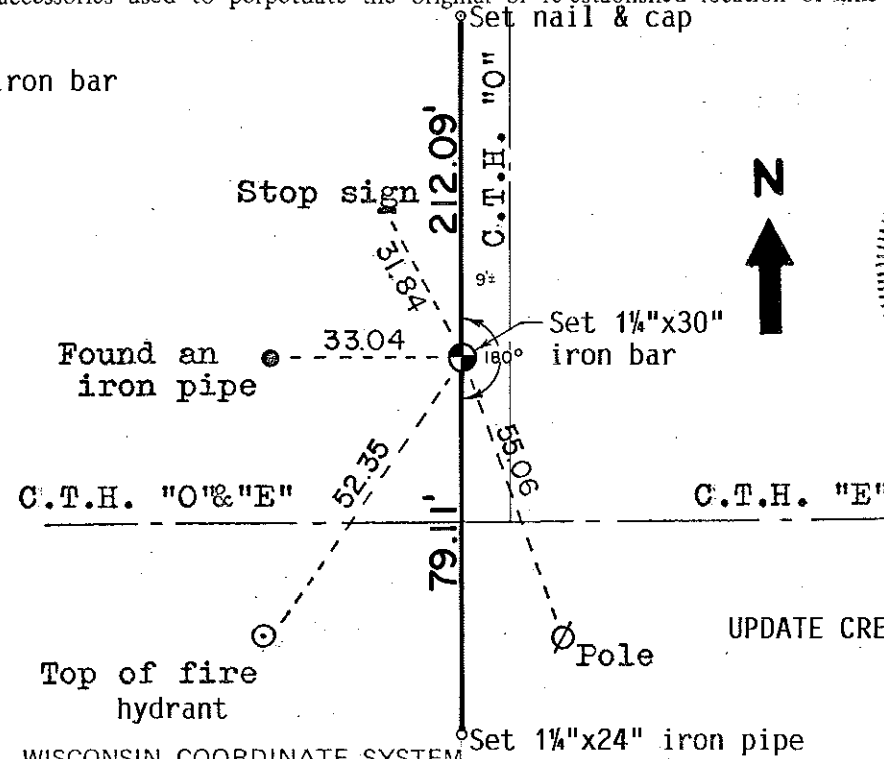
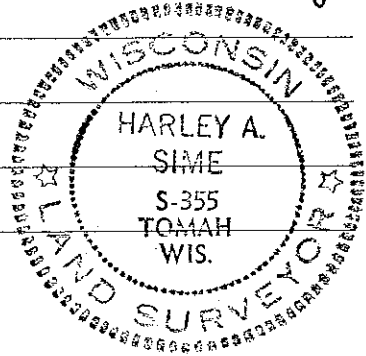
Set a Harrison in the road, down 6".

*UPDATE: Removed Harrison; set 1 1/4"x30" round iron bar

Witnesses to corner location:

W.C. Jung-Crew Chief *W.C. Jung*

A. Lueck



UPDATE CREW: Meyer, Kenworthy
October 13, 1992

SURVEY CONTROL ORDER

Horizontal	_____
Vertical	_____

WISCONSIN COORDINATE SYSTEM

Corner	East (X)	North (Y)	Elevation (Z)	Zone
Control Sta. Name				

~~City, Village or Town~~ Lincoln
County of Monroe

COUNTY SURVEYOR FORM NO. 1