

84

**U.S. PUBLIC LAND CORNER
MAINTENANCE**

**Corner ID : S1/4 Sec. 23, T19N-R1W
21901230020**

<u>DATE</u>	<u>CREW</u>	<u>MONUMENT TYPE</u> -----
June 1, 2018	Zachariah P. Dechant Gary L. Dechant	Existing 3" iron pipe 39' east of Bronco Road & 51' north of Colorado Ave. On west edge of reservoir, under water. Set survey sign 1' west. Power pole to SW only remaining tie.

References:

	<u>Bearing</u>	<u>Distance</u>
1) Set 3/4"x 24" round iron bar, down 6", 17' north of Colorado Ave	SE	38.95'
2) Set 3/4"x24" round iron bar, down 6", 15' south of road intersection	SW	68.15'
3) Set 3/4"x24" round iron bar, down 6", 22' west of Bronco Rd, 2' north of stop sign	West	59.89'
4) Set 3/4"x24" round iron bar, down 6", 26' east of Bronc Road	NW	35.40'



CERTIFICATE

CERTIFIED LAND CORNER

No. 84

I, William C. Jung, do hereby certify that on the 26th day of May 1978, I found ~~(evidence)~~ (no evidence) of the S 1/4 corner of Section 23, T 19 N, R 1 W, Fourth Principal Meridian, and I re-established said corner according to the Wisconsin Statutes as shown and described hereon.

Dated this 12th day of Dec. 1978.
William C. Jung, R.L.S. 1323
Crew Chief, County Surveyor's
Title Office

History of original corner establishment:

Fred Holden shows this corner in his notes of Jan. 1901 and Jan. 1902.

Description of corner evidence found:

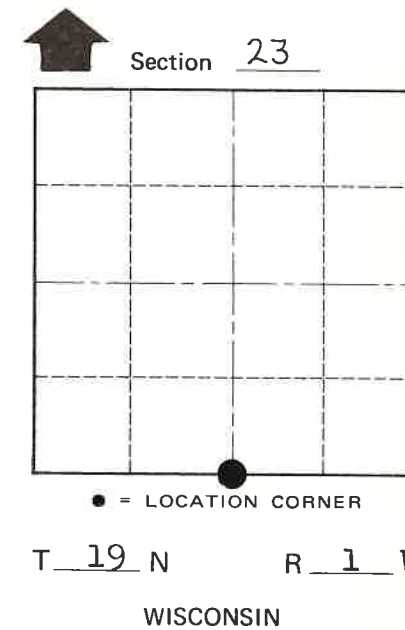
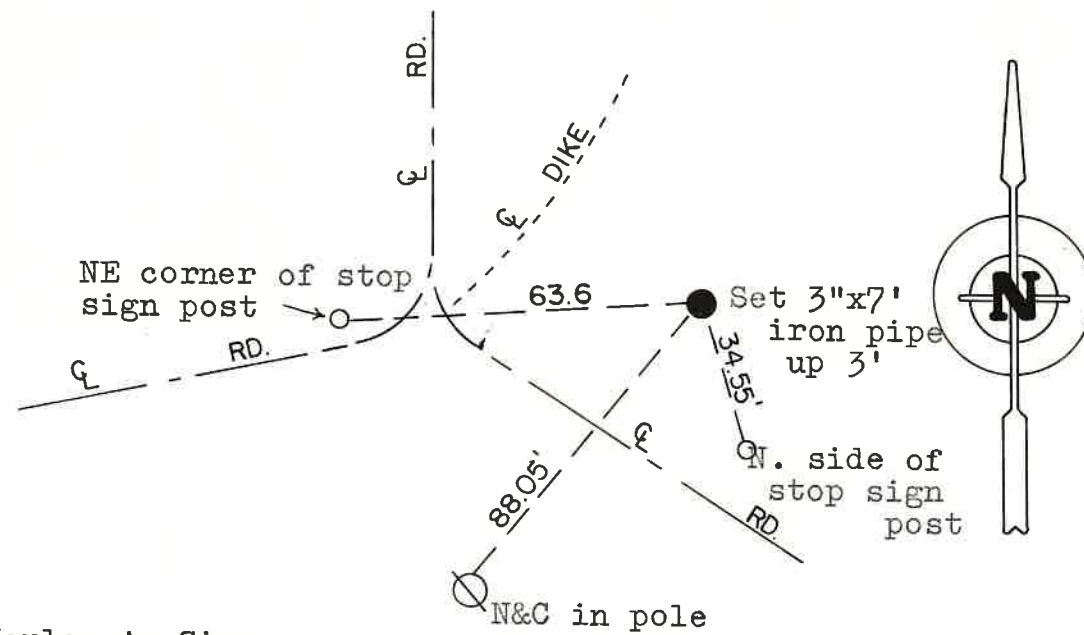
Set the corner on line between the SW corner and the S 1/16 SW, and at a distance from the S 1/16 SW equal to the distance between the S 1/16 SW and SW corner.

See Reverse Side For Maintenance

Description of corner and witness monuments, references and accessories used to perpetuate the original or re-established location of this corner:

Witnesses to corner location:

W. Jung
G. Dechant



COUNTY SURVEYOR FORM NO. 1

SURVEY CONTROL ORDER

Horizontal _____
Vertical _____

Approved by: Harley A. Sime
County Surveyor

WISCONSIN COORDINATE SYSTEM

Corner	East (X)	North (Y)	Elevation (Z)	Zone
Control Sta. Name				

City, Village or Town Lincoln
County of Monroe