

# U.S. LAND CORNER MAINTENANCE

Corner ID : SE Sec.23 , T19N-R1W  
21901230000

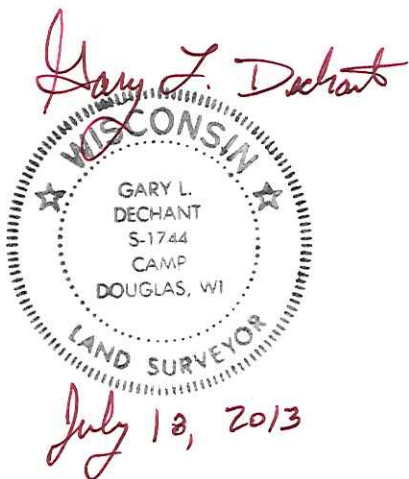
<u>DATE</u>	<u>CREW</u>	<u>MONUMENT TYPE</u> -----
June 13, 2013	Zachariah P.Dechant Gary L. Dechant	Existing Harrison in road intersection, down 12" Set mag nails 1' north & 1' west

References:

Set 1" iron pipe 2' south Tele & power ped  
Set 1" iron pipe down 6" 20' west of west vent pipe of mound system  
Set 3/4" 3/4"x24" hexagon iron bar down 8" in middle of sign posts

Bearing  
N36W  
S24E  
N34E

Distance  
53.56'  
65.97'  
73.54'



CERTIFICATE

CERTIFIED LAND CORNER

No. 83

21901230000

I, William C. Jung, do hereby certify that on the 18th day of November 1977, I found (evidence) (no evidence) of the S.E. corner of Section 23, T 19 N, R 1 W, Fourth Principal Meridian, and I re-established said corner according to the Wisconsin Statutes as shown and described hereon.

History of original corner establishment:

In his notes of Jan. 1901, June 1901, and Jan. 1902, Holden shows a plow share at this corner.

Description of corner evidence found:

Found an iron pipe by a plow share. Removed both and set a Harrison Monument.

Dated this 23rd day of Nov. 1977.

William C. Jung, R.L.S. 1323

Crew Chief, County Surveyor's Title Office

Description of corner and witness monuments, references and accessories used to perpetuate the original or re-established location of this corner:

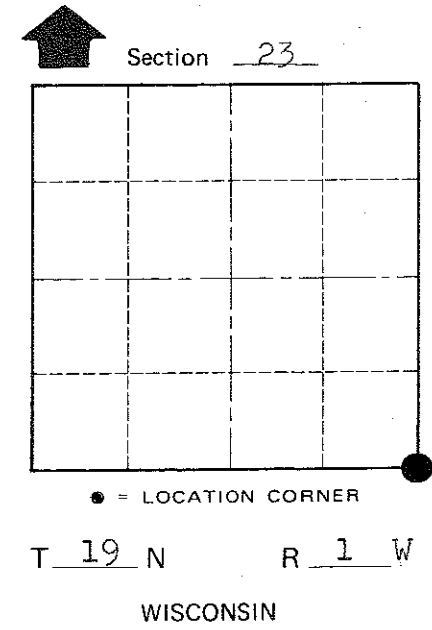
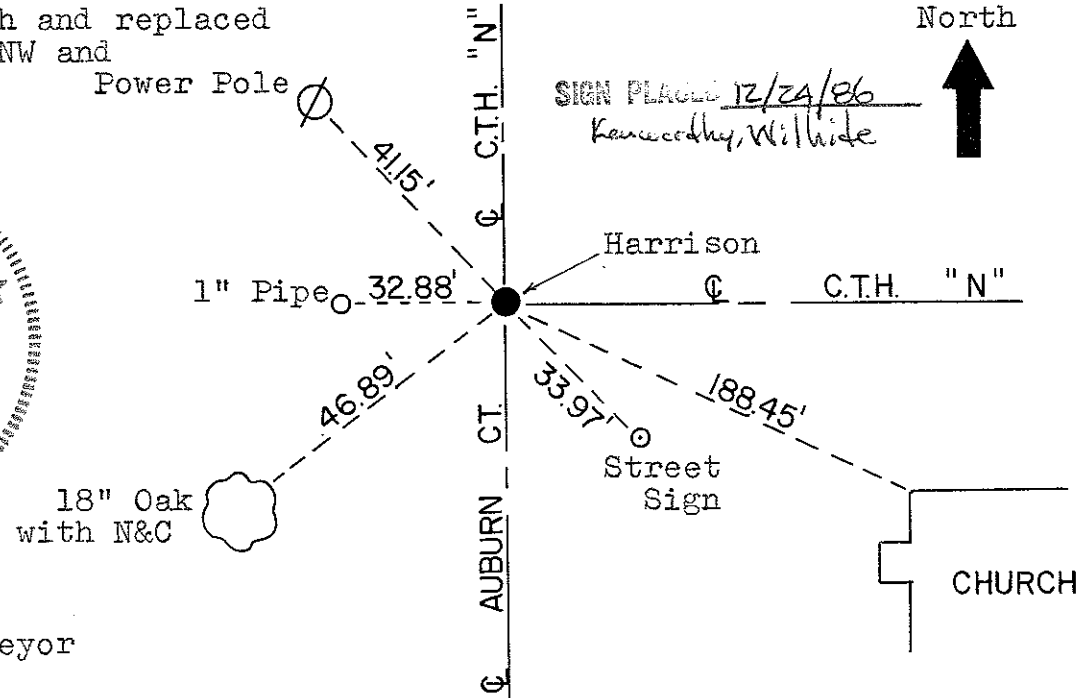
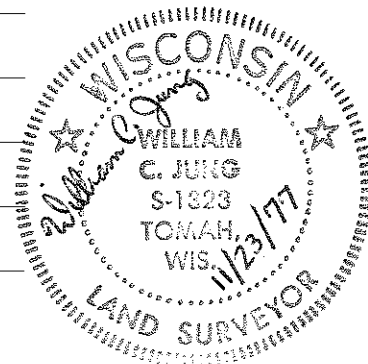
Found iron pipe by plow share, removed both and replaced with Harrison Monument. N&C set 3' to the NW and

Witnesses to corner location: SW of corner.

W. Jung

C. Pietz

G. Dechant



Approved: Harley Sime, County Surveyor

Table with 2 rows: SURVEY CONTROL ORDER, Horizontal, Vertical.

Table with 5 columns: Corner, Control Sta. Name, East (X), North (Y), Elevation (Z), Zone.

City, Village or Town: Lincoln; County of: Monroe

COUNTY SURVEYOR FORM NO. 1