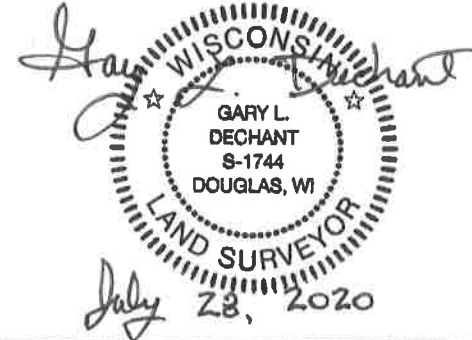


**U.S. PUBLIC LAND CORNER  
MAINTENANCE**

**# 78**

**Corner ID: E1/4 Sec.22, T19N-R1W  
21901222000**

<u>DATE</u>	<u>CREW</u>	<u>MONUMENT INFO</u>	<u>Compass Bearing</u>	<u>Distance</u>
July 20, 2020	Zachariah P. Dechant Gary L. Dechant	Found Harrison intact, 6' NE of center of single railroad track, on line with downed fence to the east, 250' SE of south edge of pond west of railroad/railroad crossing both east & west		
1)	Set 2' section of T post, 6' NE of railroad r/w fence, 6' SE of double 12" Maple		N48E	49.32
2)	Set 2' section of T post, 7' NE of railroad r/w fence		S71E	91.51'
3)	Set 2' section of T post, 3' SE of existing cut off telegraph pole		S18E	74.00'
4)	Set 2' section of T post, 4' easterly of old telegraph pole mile sign #166 Pole is leaning northeasterly		N60W	73.50'

*Gary L. Dechant*  
  
*July 28, 2020*

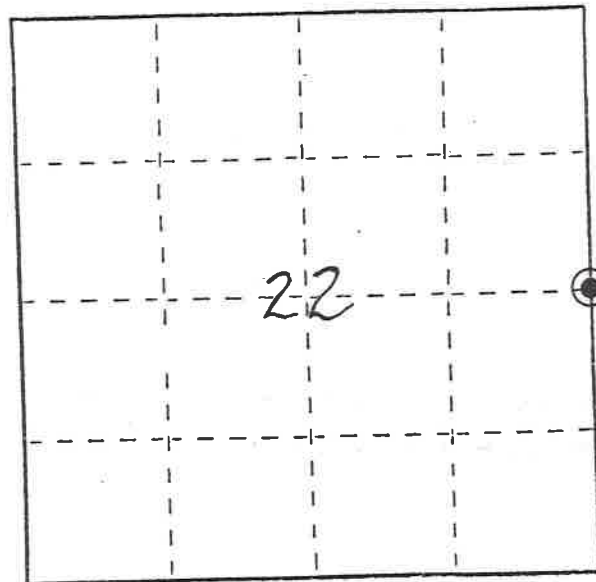
U. S. PUBLIC LAND SURVEY MONUMENT RECORD

INSTRUCTIONS :

This record shall show the location of the corner and shall include all of the following nine elements (a through i).

- (a) Identify the corner by reference to the U.S. public land survey system.
- ⊙ = Corner monument restored.

East 1/4 corner of Section 22, T19N, R1W, Fourth Principal Meridian, Town of Lincoln, Monroe County, Wisconsin.



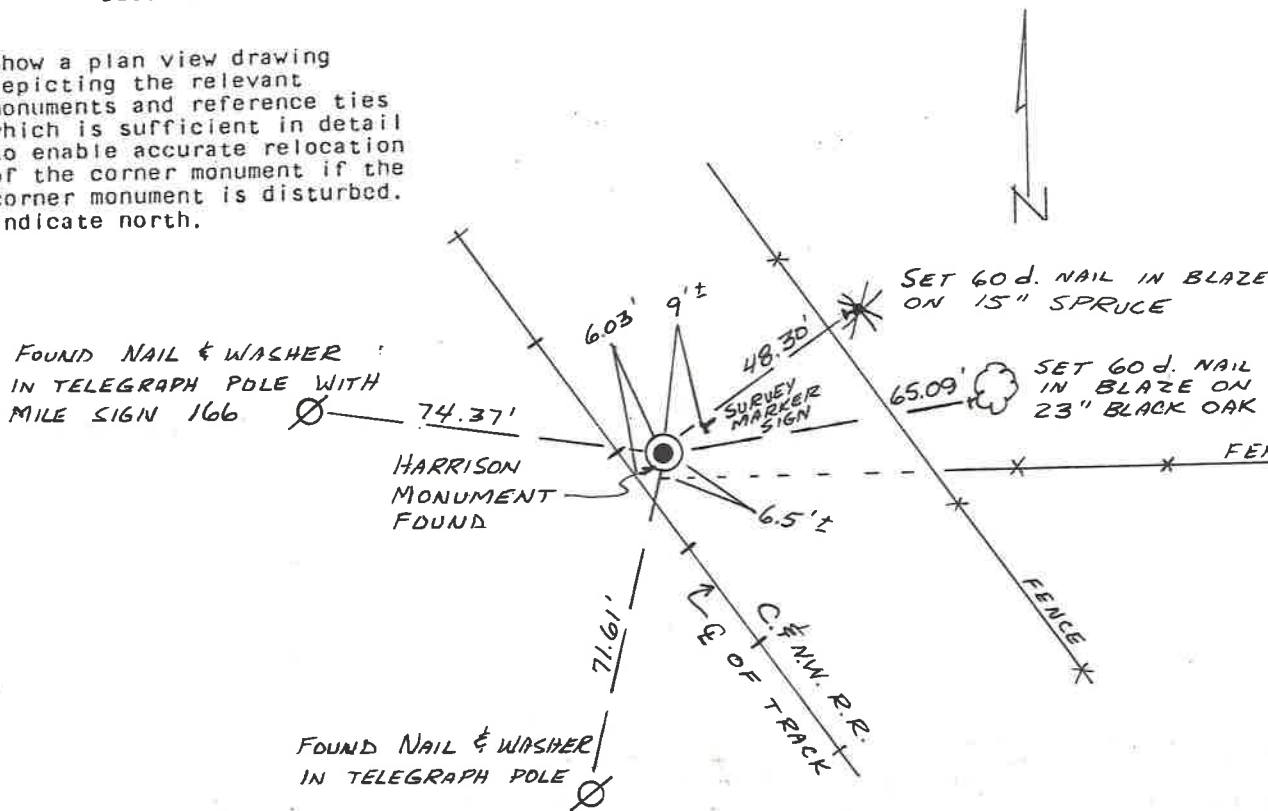
**See Reverse Side For Maintenance**

- (b) Describe any record evidence, monument evidence, occupational evidence, testimonial evidence or any other material evidence you considered, and whether the monument was found or placed.

The Harrison monument at this corner and two witness monuments were found on April 19, 1993 by Daniel M. Murray. (See previous Certified Land Corner record by Mark R. Heidecke dated May 22, 1979). Two additional ties were added as shown below.

- (c) In the plan view drawing below, provide reference ties to at least 4 witness monuments, or, if the location is within a municipality, to at least 2 witness monuments. (Witness monuments shall be made of concrete, natural stone, iron or other equally durable material.) Describe witness monuments.

- (d) Show a plan view drawing depicting the relevant monuments and reference ties which is sufficient in detail to enable accurate relocation of the corner monument if the corner monument is disturbed. Indicate north.



21901222000

(e) Describe any material discrepancy between the location of the corner as restored or reestablished and the location of that corner as previously restored or reestablished by distance and direction. Show the discrepancy on the plan view drawing under (d), above. Show the distances between the corner as previously restored or reestablished and (1) the corner as restored or reestablished, and (2) to at least 2 of the witness monuments shown on the drawing in (d), above.

No known discrepancies.

(f) Was the corner restored through acceptance of (1) an obliterated evidence location, or, (2) a found, perpetuated location?

A found perpetuated location.

(g&h) Was the corner reestablished through lost corner proportionate methods? If so, show the method, including the directions and distances to other public land survey corners used as evidence or used for proportioning in determining the corner location?

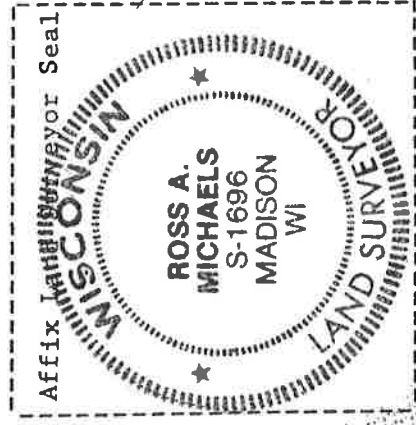
Not a lost corner.

(i) I, Ross A. Michaels (type or print name) certify that the corner location shown on this record was determined by me or under my direction and control and that this U.S. Public Land Survey Monument Record is correct and complete to the best of my knowledge and belief.

Ross A. Michaels Oct. 22, 1993

Signature

Date



I, Mark R. Heidecke, do hereby certify that on the 14 day of March 1979, I found ~~(evidence)~~ (no evidence) of the East 1/4 corner of Section 22, T 19 N, R 1 W, Fourth Principal Meridian, and I re-established said corner according to the Wisconsin Statutes as shown and described hereon.

Dated this 22 day of May 1979.

*Mark R. Heidecke*

Registered Land Surveyor  
Title



History of original corner establishment:

Fred Holden surveyed in the area early in the 1900's, but none of his monuments along the East line of Sec. 22, nor along the East and West Quarter line of Sec. 22 were found.

Description of corner evidence found:

A Harrison monument was set at this corner half way and on a straight line between existing Harrison monuments at the Northeast and Southeast section corners. This location fits both a fence to the East at this location and an old fence to the East at the E 1/16 Corner of the SE 1/4 of Sec. 22.

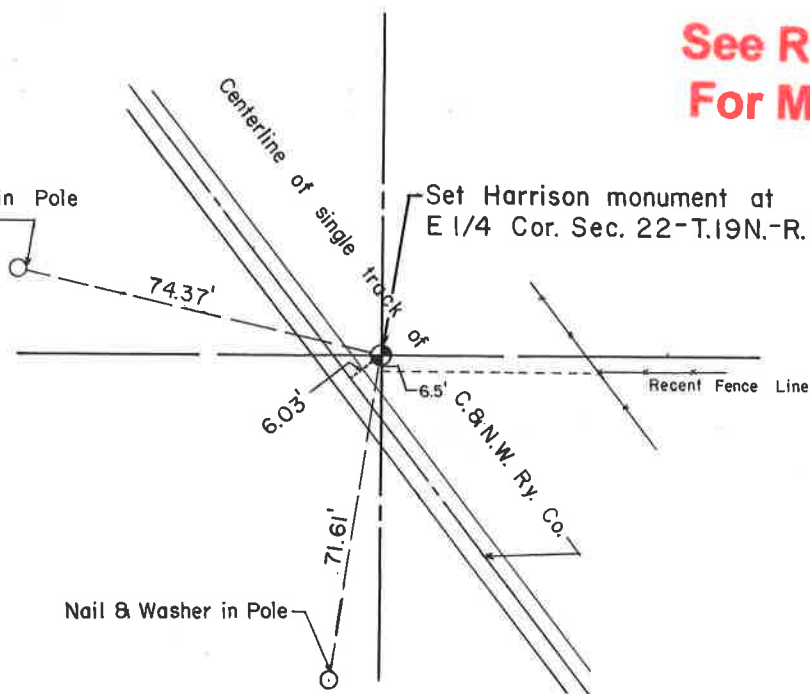
Description of corner and witness monuments, references and accessories used to perpetuate the original or re-established location of this corner:

Witnesses to corner location:

- M. Heidecke
- L. Feddersen
- M. Johnson

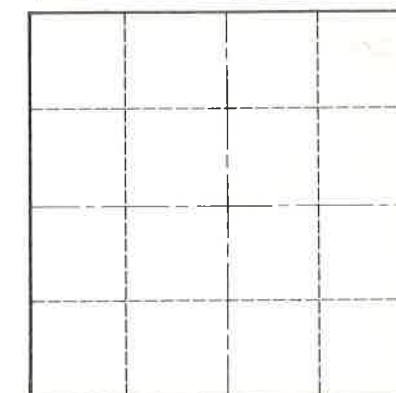
COUNTY SURVEYOR FORM NO. 1

Nail & Washer in Pole  
Mile Post 166



**See Reverse Side For Maintenance**

Section 22



O = LOCATION CORNER

T 19 N R 1 W

WISCONSIN

SURVEY CONTROL ORDER

Horizontal	_____
Vertical	_____

WISCONSIN COORDINATE SYSTEM

Corner	East (X)	North (Y)	Elevation (Z)	Zone
Control Sta. Name				

~~City of Lincoln~~ Town of Lincoln

County of Monroe