

Stock No. 26273

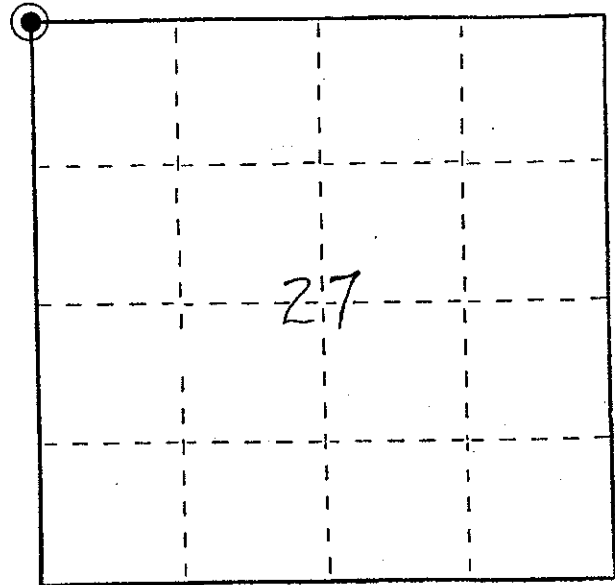
U. S. PUBLIC LAND SURVEY MONUMENT RECORD

INSTRUCTIONS: This record shall show the location of the corner and shall include all of the following nine elements (a through i).

- (a) Identify the corner by reference to the U.S. public land survey system.

● = Corner monument restored.

Northwest corner of Section 27, T19N, R1W, Fourth Principal Meridian, Town of Lincoln, Monroe County, Wisconsin.

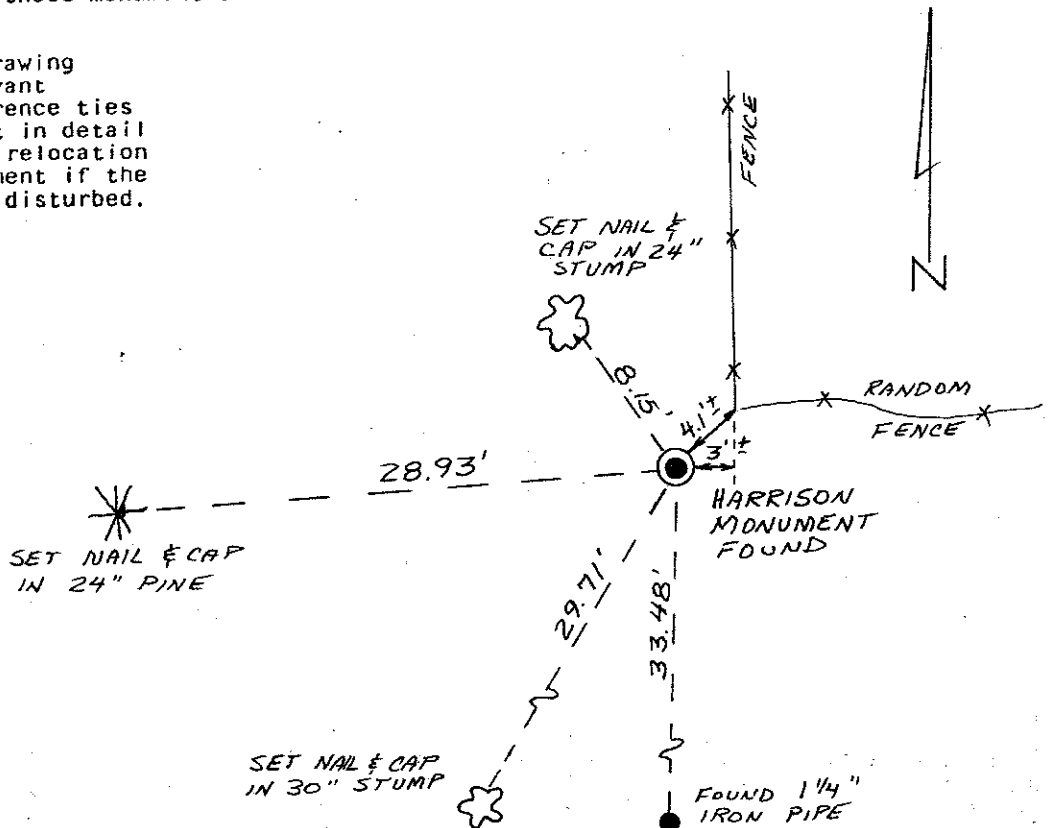


- (b) Describe any record evidence, monument evidence, occupational evidence, testimonial evidence or any other material evidence you considered, and whether the monument was found or placed.

The Harrison monument at this corner and one previous witness monument were found on March 30, 1993 by Michael L. Deems. (See previous Certified Land Corner record by Douglas J. Malliet dated May 19, 1978). Three additional tie points were added as shown below.

- (c) In the plan view drawing below, provide reference ties to at least 4 witness monuments, or, if the location is within a municipality, to at least 2 witness monuments. (Witness monuments shall be made of concrete, natural stone, iron or other equally durable material.) Describe witness monuments.

- (d) Show a plan view drawing depicting the relevant monuments and reference ties which is sufficient in detail to enable accurate relocation of the corner monument if the corner monument is disturbed. Indicate north.



21901210000

(e) Describe any material discrepancy between the location of the corner as restored or reestablished and the location of that corner as previously restored or reestablished by distance and direction. Show the discrepancy on the plan view drawing under (d), above. Show the distances between the corner as previously restored or reestablished and (1) the corner as restored or reestablished, and (2) to at least 2 of the witness monuments shown on the drawing in (d), above.

No known discrepancies.

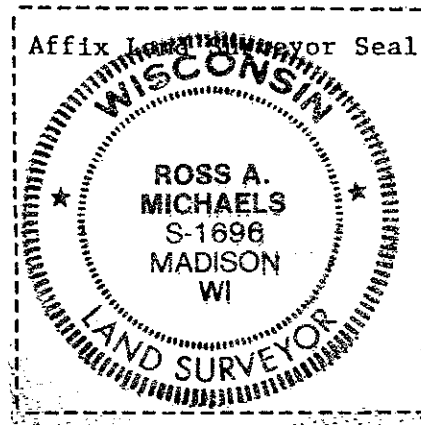
(f) Was the corner restored through acceptance of (1) an obliterated evidence location, or, (2) a found perpetuated location?

A found perpetuated location.

(g&h) Was the corner reestablished through lost corner proportionate methods? If so, show the method, including the directions and distances to other public land survey corners used as evidence or used for proportioning in determining the corner location?

Not a lost corner.

(i) I, Ross A. Michaels
(type or print name) certify that the corner location shown on this record was determined by me or under my direction and control and that this U.S. Public Land Survey Monument Record is correct and complete to the best of my knowledge and belief.
Ross A. Michaels Oct. 23, 1993



CERTIFICATE

CERTIFIED LAND CORNER

No. 87

I, Douglas J. Malliet, do hereby certify that on the 19th day of April 19 78, I found (evidence) (~~XXXXXXXX~~) of the Northwest corner of Section 27, T19 N, R1 W, Fourth Principal Meridian, and I re-established said corner according to the Wisconsin Statutes as shown and described hereon.

Dated this 19th day of May 1978.

Douglas J. Malliet

REGISTERED LAND SURVEYOR, S-1266
Title

History of original corner establishment:

No recorded history of corner perpetuation since original U.S. Government Survey. Two unrecorded iron pipes were found to the South, as shown below

Description of corner evidence found:

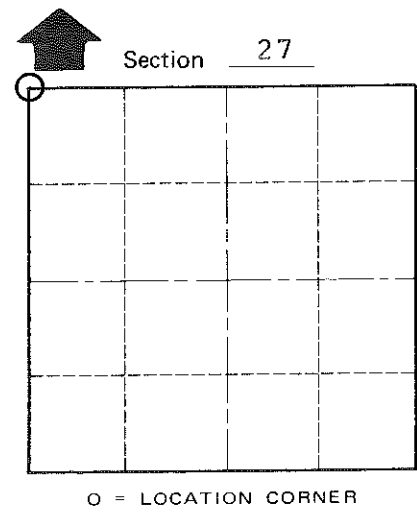
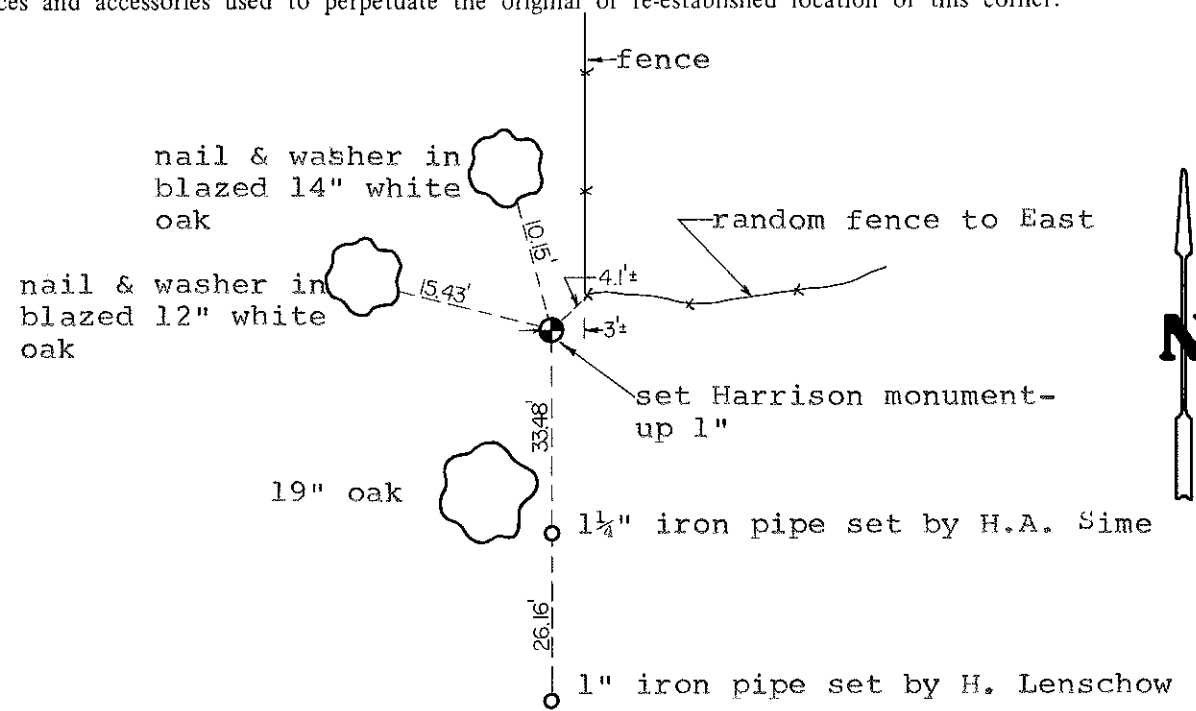
This corner was established on line between an existing Harrison at the NW corner of Sec. 22 and the computed location of the W $\frac{1}{2}$ corner of Sec. 27, and half-way between the W $\frac{1}{2}$ corner of Sec. 27 and the W $\frac{1}{2}$ corner of Sec. 22. This location agrees with the Government distances and a fence corner at this location fairly well. This corner location also appears to agree with a forty fence to the North. However, an occupied fourth fence corner at the W1/16NW does not agree with this corner location or any other information obtained in relation to the establishment of the NW corner of Sec. 27

Description of corner and witness monuments, references and accessories used to perpetuate the original or re-established location of this corner:

Witnesses to corner location:

Douglas J. Malliet

Lawrence A. Feddersen



T 19 N R 1 W
WISCONSIN

COUNTY SURVEYOR FORM NO. 1

SURVEY CONTROL ORDER

Horizontal	_____
Vertical	_____

WISCONSIN COORDINATE SYSTEM

Corner	East (X)	North (Y)	Elevation (Z)	Zone
Control Sta. Name				

City, Village or Town of LINCOLN

County of MONROE