

CERTIFICATE

CERTIFIED LAND CORNER

No. 76

21901202000

I, Garold A. Sime, do hereby certify that on the 25th day of October 19 77, I found (evidence) (no evidence) of the E 1/4 corner of Section 20, T19 N, R 1 W, Fourth Principal Meridian, and I re-established said corner according to the Wisconsin Statutes as shown and described hereon.

History of original corner establishment:

A.S. Ingalls, County Surveyor, was at this corner on April 25, 1873.

Description of corner evidence found:

Found an existing iron pipe used in previous surveys and accepted same as being the corner.

Dated this 17th day of Nov. 1977.

Garold A. Sime, R.L.S. 1261

Crew Chief, County Surveyor's  
Office

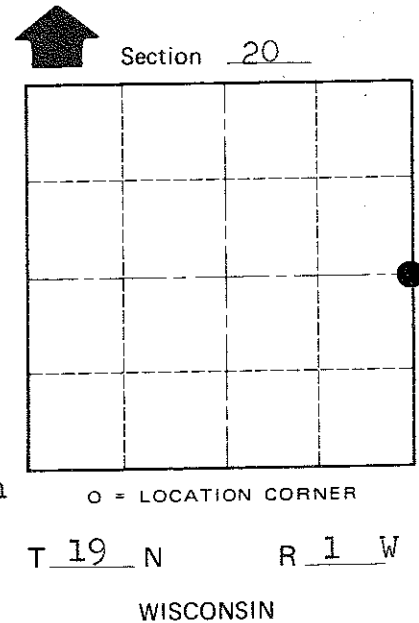
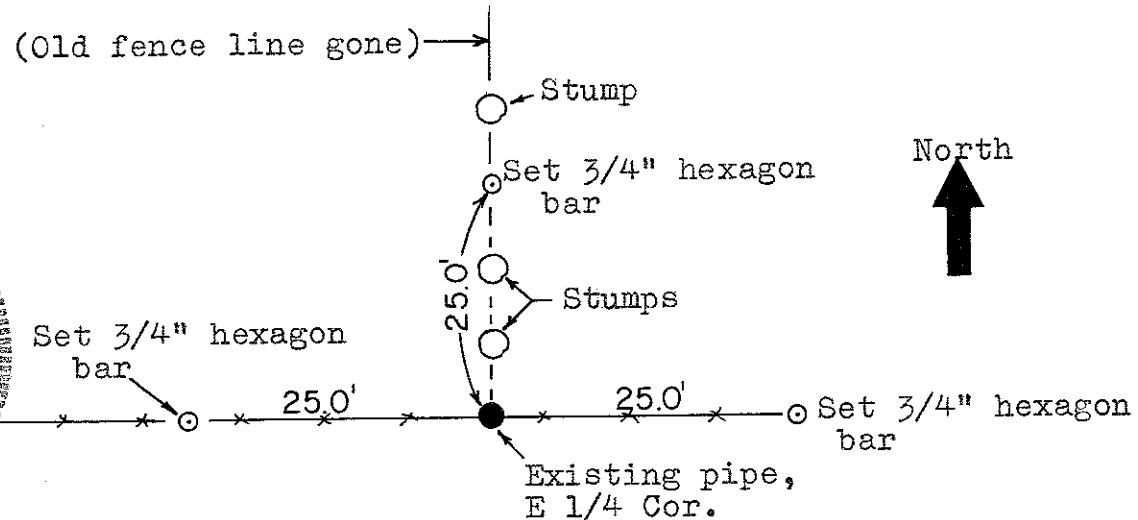
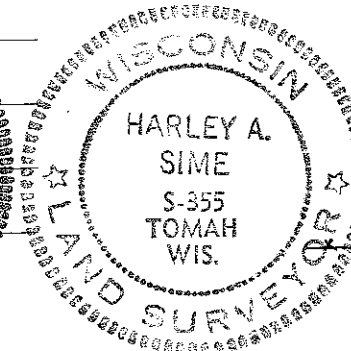
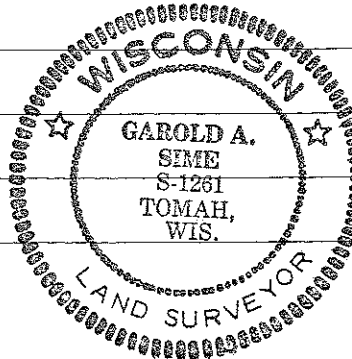
COUNTY SURVEYOR FORM NO. 1

Description of corner and witness monuments, references and accessories used to perpetuate the original or re-established location of this corner:  
Found a 2"x30" iron pipe at a long occupied fence corner.

Witnesses to corner location:

G. A. Sime Garold A. Sime R.L.S.

C. Pietz



Section 20  
T 19 N R 1 W  
WISCONSIN

SURVEY CONTROL ORDER

Approved: Harley Sime  
County Surveyor

Horizontal	_____
Vertical	_____
Corner	_____
Control Sta. Name	_____

WISCONSIN COORDINATE SYSTEM

Corner	East (X)	North (Y)	Elevation (Z)	Zone
Control Sta. Name				

City, Village or Town Lincoln  
County of Monroe