

CERTIFICATE

CERTIFIED LAND CORNER

No. 90

21901200020

I, Garold A. Sime, do hereby certify that on the 25th day of October 1977, I found (evidence) (no evidence) of the S 1/4 corner of Section 20, T 19 N, R 1 W Fourth Principal Meridian, and I re-established said corner according to the Wisconsin Statutes as shown and described hereon.

History of original corner establishment:

Dated this 15th day of Nov. 1977.

Description of corner evidence found:

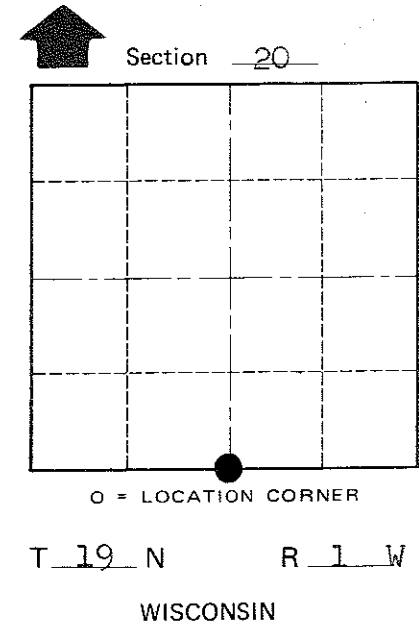
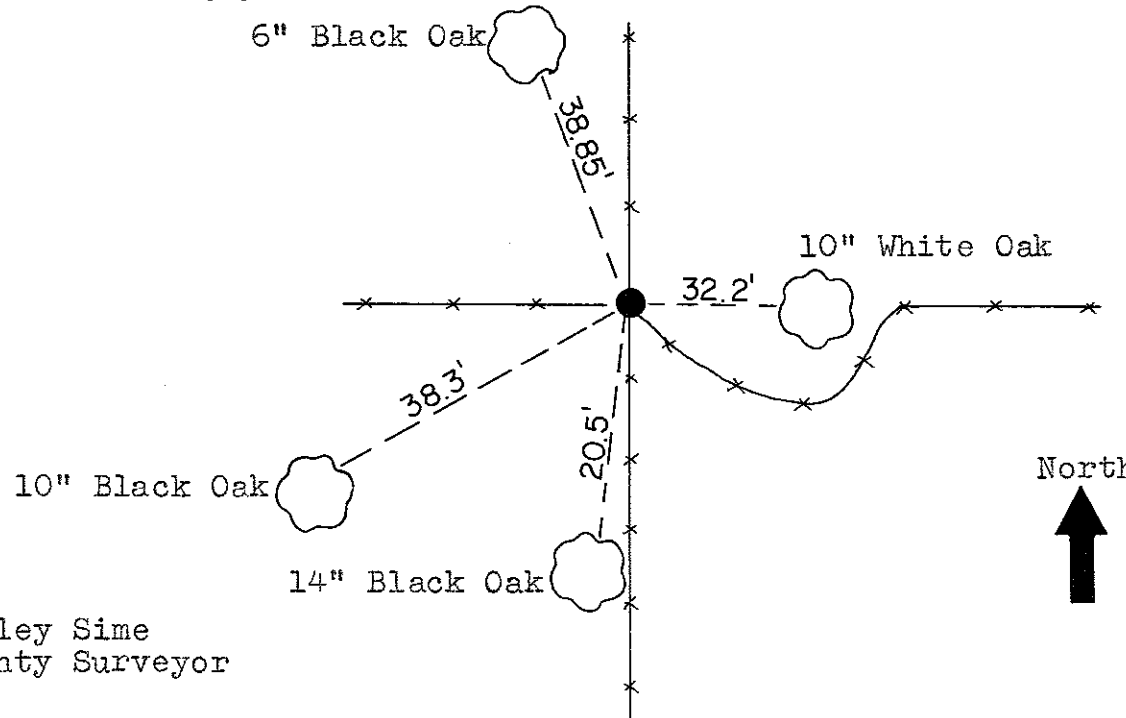
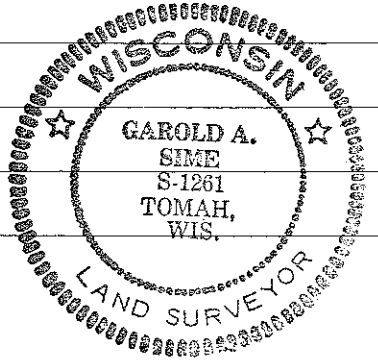
Accepted occupied fence corner as the S 1/4 corner, set Harrison Monument at intersection of fence lines.

Garold A. Sime, R.L.S. 1261
Crew Chief, County Surveyor's
Title Office

Description of corner and witness monuments, references and accessories used to perpetuate the original or re-established location of this corner:

Witnesses to corner location:

G. A. Sime Garold A. Sime R.L.S.
C. Pietz



Approved: Harley Sime
County Surveyor

SURVEY CONTROL ORDER

Horizontal	_____
Vertical	_____

WISCONSIN COORDINATE SYSTEM

Corner	East (X)	North (Y)	Elevation (Z)	Zone
Control Sta. Name				

City, Village or Town Lincoln
County of Monroe

COUNTY SURVEYOR FORM NO. 1