


**U.S. PUBLIC LAND CORNER
MAINTENANCE**

89

**Corner ID: SE Sec.20, T19N-R1W
21901200000**

<u>DATE</u>	<u>CREW</u>	<u>MONUMENT INFO</u>	
August 12, 2020	Zachariah P. Dechant Gary L. Dechant	Found Harrison intact, down 12", 3' east of power line, 31' west of center of Cobblestone Road, sign 1' north	
		<u>Compass Bearing</u>	<u>Distance</u>
1) Set 2' section of steel T post, down 6", 10' west center of Road		N56E	24.51'
2) Set 2' section of T' post, down 6", 11' west center of road		SE	22.47'
3) Set 2' section of T post, down 6", 6' NE of 10" Ash		S72W	16.25'
4) Set 2' section of T post, down 6", 6' SE of double 8" Ash		N70W	37.30'

Gary L. Dechant

August 22, 2020

CERTIFICATE

UPDATED
CERTIFIED LAND CORNER

No. 89
Page 2



I, Bryan H. Meyer, do hereby certify that on the 21st day of October 1991, I found (evidence) ~~no evidence~~ of the Southeast corner of Section 20, T 19 N, R 1 W Fourth Principal Meridian, and I re-established said corner according to the Wisconsin Statutes as shown and described hereon.

Dated this 23rd day of Oct. 1991.

Bryan H. Meyer

Deputy County Surveyor

History of corner establishment since Original Government Survey

Gary Sime established this corner in October 1977 and set a cast iron Harrison marker.

Description of corner evidence found:

I found Sime's Harrison, now down 6", with a sign on the West side of it. The 24" White Oak that Sime shows is broken off and is now a rotting stump. Obtained additional ties as shown below.

**See Reverse Side
For Maintenance**

H. A. Sime and Associates
P. O. Box 705
Tomah, Wisconsin 54660
Phone: (608)-372-5392

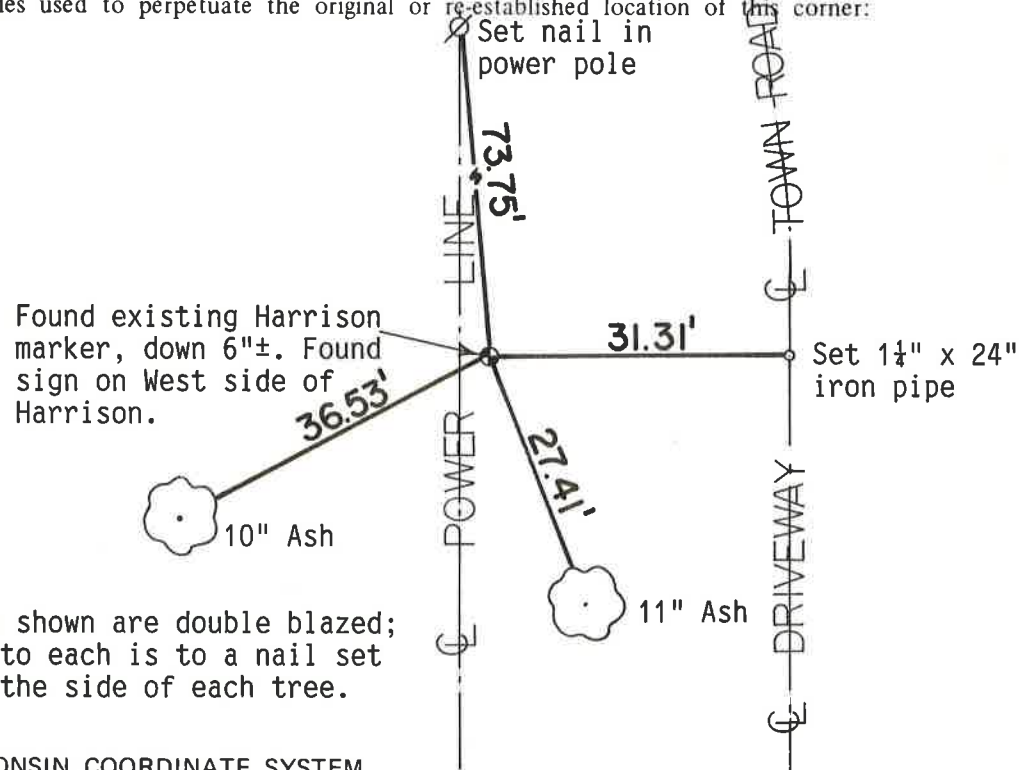
COUNTY SURVEYOR FORM NO. 1

Description of corner and witness monuments, references and accessories used to perpetuate the original or re-established location of this corner:

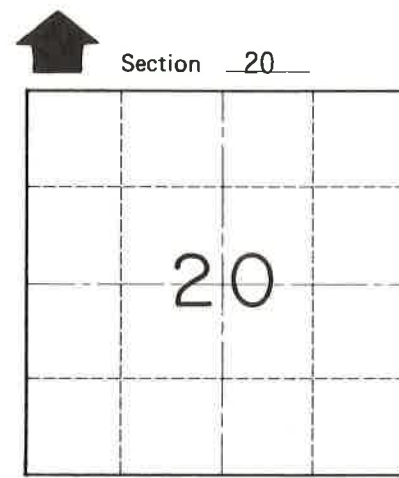
Crew: Meyer, Kenworthy
Date: October 21, 1991 - 3:00 p. m.
Weather: Sunny, 65°±
Witnesses to corner location:

John Kenworthy

Bryan H. Meyer



The Ash trees shown are double blazed; the distance to each is to a nail set in a hack in the side of each tree.



T 19 N R 1 W
WISCONSIN

SURVEY CONTROL ORDER

Horizontal	_____
Vertical	_____

WISCONSIN COORDINATE SYSTEM

Corner	East (X)	North (Y)	Elevation (Z)	Zone
Control Sta. Name				

City, Village or Town of Lincoln
County of Monroe

I, Garold A. Sime, do hereby certify that on the 25th day of October 1977, I found (evidence) (no evidence) of the S.E. corner of Section 20, T. 19 N, R. 1 W, Fourth Principal Meridian, and I re-established said corner according to the Wisconsin Statutes as shown and described hereon.

Dated this 15th day of Nov. 1977.

Garold A. Sime, R.L.S. 1261
Crew Chief, County Surveyor's
Office

History of original corner establishment:

**See Reverse Side
For Maintenance**

Description of corner evidence found:

Used the projection of fence lines to establish corner, after establishing same I found the White Oak mentioned below. This MAY have been the original Bearing Tree, but Mr. Hoag didn't know anything about the tree, the distance to the tree fit within 2' more or less of the original tie. For economical reasons I left the corner where I originally established same. Due to the terrain in area the distance the corner would move if it was ever found that the tree was the original bearing tree the difference would be minimal.

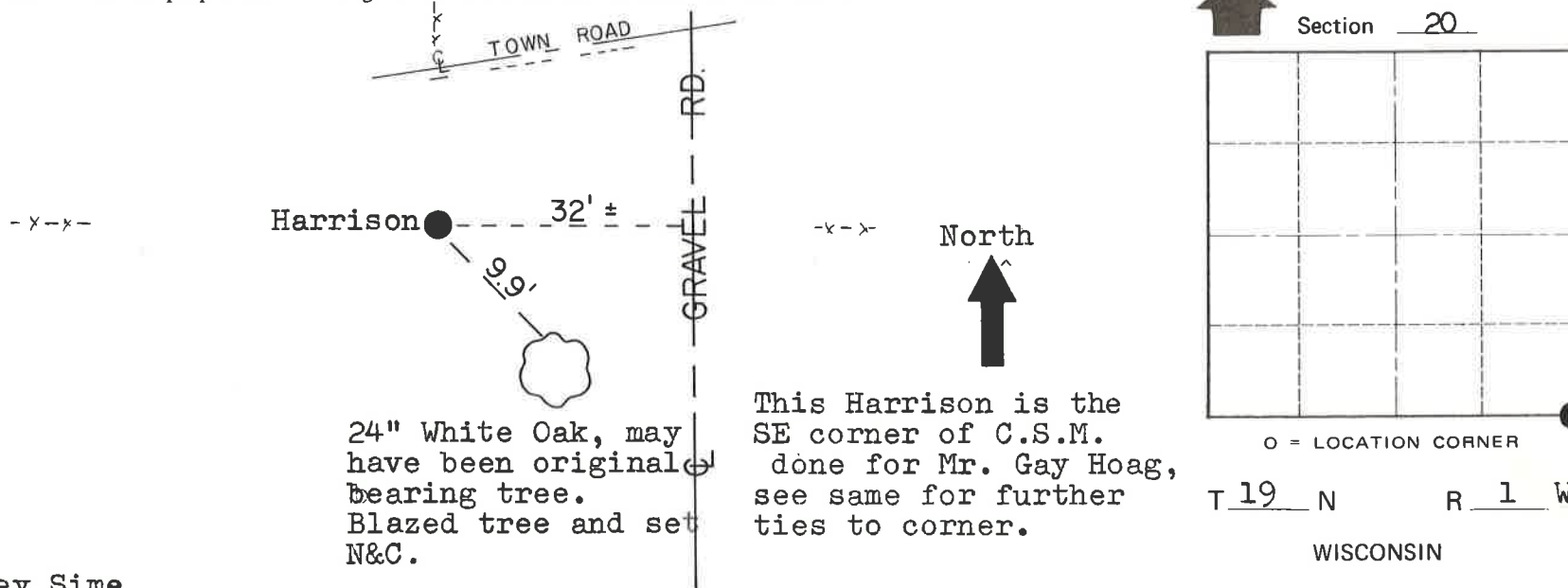
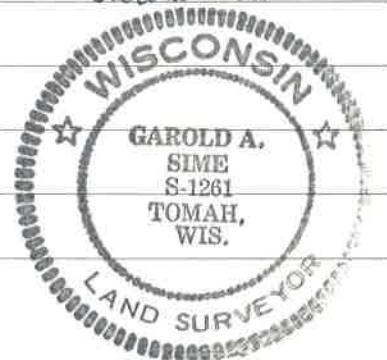
Description of corner and witness monuments, references and accessories used to perpetuate the original or re-established location of this corner:

Set Harrison, up 2"

Witnesses to corner location:

G. A. Sime Garold A. Sime R.L.S.

C. Pietz



24" White Oak, may have been original bearing tree. Blazed tree and set N&C.

This Harrison is the SE corner of C.S.M. done for Mr. Gay Hoag, see same for further ties to corner.

Approved: Harley Sime
County Surveyor

SURVEY CONTROL ORDER

Horizontal	_____
Vertical	_____

WISCONSIN COORDINATE SYSTEM

Corner	East (X)	North (Y)	Elevation (Z)	Zone
Control Sta. Name				

City, Village or Town Lincoln

County of Monroe

COUNTY SURVEYOR FORM NO. 1