

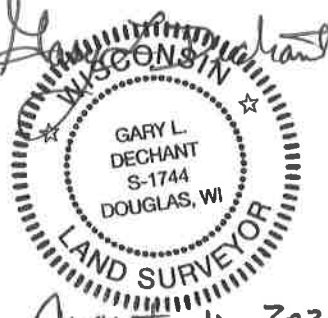
**U.S. PUBLIC LAND CORNER
MAINTENANCE**

75

**Corner ID: E1/4 Sec.19, T19N-R1W
21901192000**

<u>DATE</u>	<u>CREW</u>	<u>MONUMENT INFO</u>
August 5, 2020	Zachariah P. Dechant Gary L. Dechant	Corner is 1" iron pipe, 36' south of power line, set new sign 1/2' north. Existing 2" reference pipe 16.5' south with two large pines between pipes

	<u>Compass Bearing</u>	<u>Distance</u>
1) Set 2' section of steel T post, down 10" in filed	N50E	38.88'
2) Set 2' section of T' post, down 6"	S25E	31.65'
3) Set 2' section of T post, down 6"	S12W	23.47'
4) Set 2' section of T post, down 10" in field	N20W	27.36'

Zachariah P. Dechant

August 11, 2020

I, H. A. Sime, do hereby certify that on the 23rd day of April 1973 I found (evidence) ~~found~~ of the East 1/4 corner of Section 19, T 19 N, R 1 W Fourth Principal Meridian, and I re-established said corner according to the Wisconsin Statutes as shown and described hereon.

Dated this 20th day of March 1981.

Harley A. Sime, R.L.S. 355

County Surveyor

Title

History of corner establishment since Original Government Survey

A. S. Ingalls, County Surveyor, was at this corner on the 21st and 25th days of April, 1873.

Description of corner evidence found:

Set the corner 1320 feet East of an existing forty fence and 16.5 feet North of an existing reference iron pipe. This fits very well the half mile distance South to the section corner.

This corner was set by Duane Marten on April 23, 1973.

See Reverse Side For Maintenance

Description of corner and witness monuments, references and accessories used to perpetuate the original or re-established location of this corner:

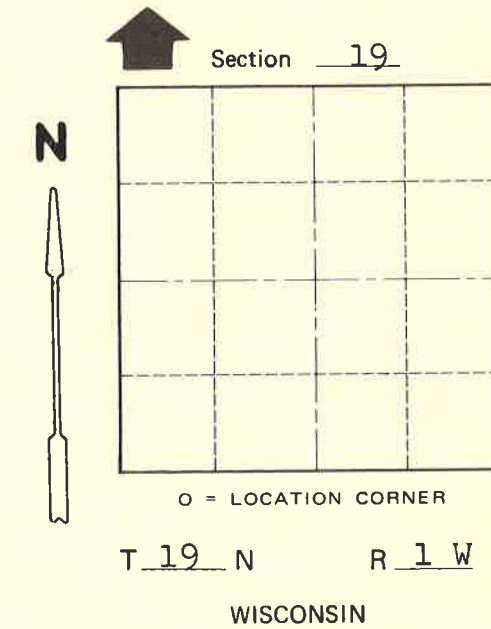
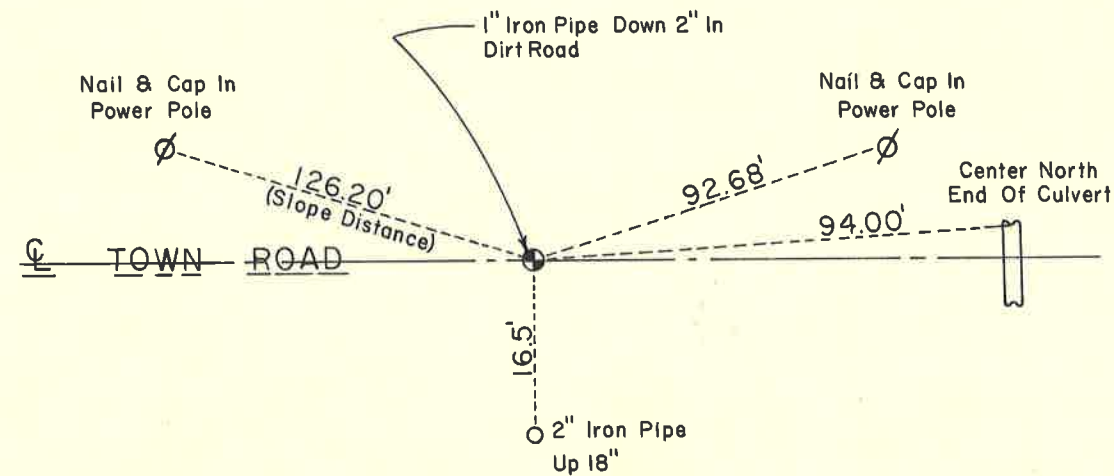
Witnesses to corner location:

D. Marten - R.L.S. 1029

J. Felber

G. Dechant 3-16-1981

B. Meyer



**Approved: HARLEY A. SIME
MONROE CO. SURVEYOR**

SURVEY CONTROL ORDER

Horizontal	_____
Vertical	_____

WISCONSIN COORDINATE SYSTEM

Corner	East (X)	North (Y)	Elevation (Z)	Zone
Control Sta. Name				

~~Village~~ Town Lincoln
County of Monroe
Wisconsin

COUNTY SURVEYOR FORM NO. 1