

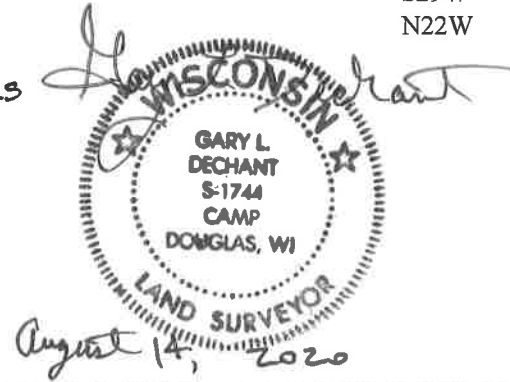
**U.S. PUBLIC LAND CORNER
MAINTENANCE**

92

**Corner ID: N1/4 Sec.30, T19N-R1W
21901190020**

<u>DATE</u>	<u>CREW</u>	<u>MONUMENT INFO</u>		
August 6, 2020	Zachariah P. Dechant Gary L. Dechant	Found Harrison center of cinder Ave, top broke off, down 6", fence running north. All previous ties gone.		
			<u>Compass Bearing</u>	<u>Distance</u>
		1) Set 2' section of steel T post, down 6", in field	N29E	38.36'
		2) Set 2' section of T' post, down 6" in center of field entrance	S22E	18.37'
		3) Set 2' section of T post, down 10" in field	S29W	37.29'
		4) Set 2' section of T post, down 6", in pasture	N22W	38.63'

HARRISON & REFERENCE MARKERS
SET ON STRAIGHT LINES.



I, Garold A. Sime, do hereby certify that on the 25th day of July 19 78, I found (evidence) (~~no evidence~~) of the N¹/₄ corner of Section 30, T 19 N, R 1 W Fourth Principal Meridian, and I re-established said corner according to the Wisconsin Statutes as shown and described hereon.

Dated this 11th day of Jan. 19 79.

Garold A. Sime, R.L.S. 1261

County Surveyor's Office

History of original corner establishment:

A. S. Ingalls was at this corner in April of 1873.

Description of corner evidence found:

Replaced existing iron pipe with Harrison Monument.

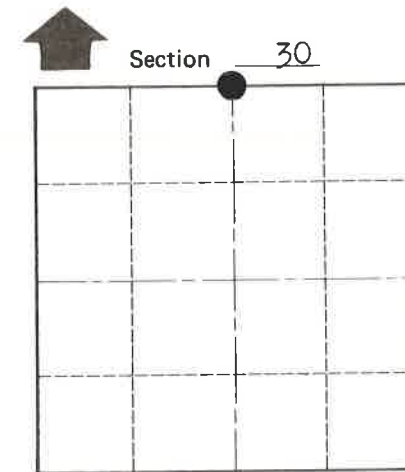
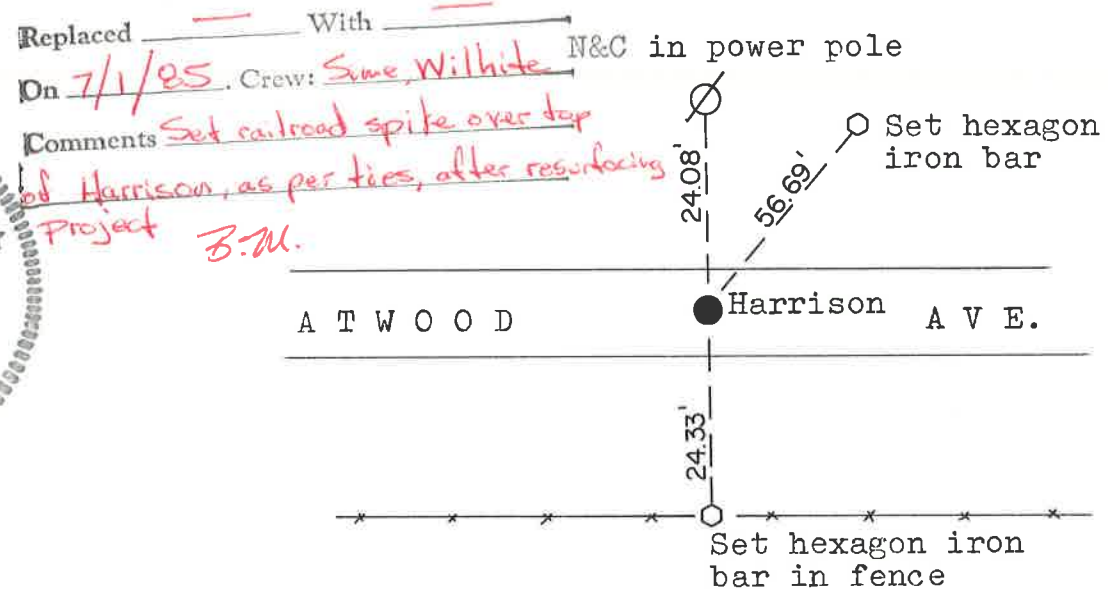
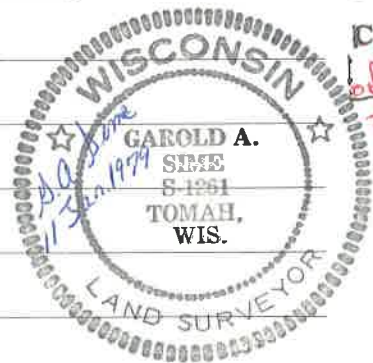
See Reverse Side For Maintenance

Description of corner and witness monuments, references and accessories used to perpetuate the original or re-established location of this corner:

Witnesses to corner location:

D. Dade

B. Meyer



● = LOCATION CORNER
T 19 N R 1 W
WISCONSIN

SURVEY CONTROL ORDER

Horizontal _____

Vertical _____

Approved by: Harley A. Sime
County Surveyor

WISCONSIN COORDINATE SYSTEM

Corner	East (X)	North (Y)	Elevation (Z)	Zone
Control Sta. Name				

City, Village or Town Lincoln

County of Monroe

COUNTY SURVEYOR FORM NO. 1