

21901190000

I, Harley A. Sime, do hereby certify that on the 23rd day of April 1973, I found evidence of the Southeast corner of Section 19, T 19 N, R 1 W Fourth Principal Meridian, and I re-established said corner according to the Wisconsin Statutes as shown and described hereon.

Dated this 7th day of Feb. 1977.

Harley A. Sime, R.L.S. 355

County Surveyor

Title

History of original corner establishment:

No known recorded history since the original government survey.

Description of corner evidence found:

Set a 3/4"x24" iron bar at an old fence corner.

Accepted the fence corner as the best available evidence.

Duane Marten set this iron bar.

Description of corner and witness monuments, references and accessories used to perpetuate the original or re-established location of this corner:

The corner is a 3/4"x24" iron bar.

NOTE: Trees Double Blazed With Nail & Caps Set

Witnesses to corner location:

D. Marten-R.L.S. 1029

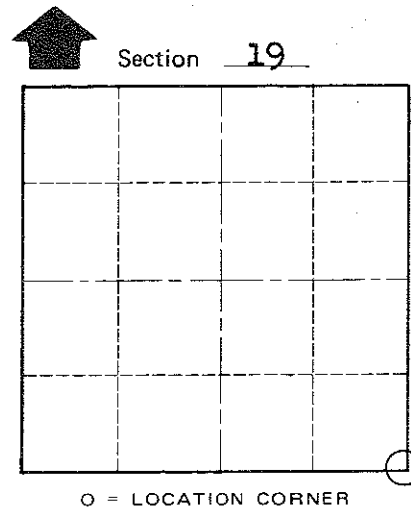
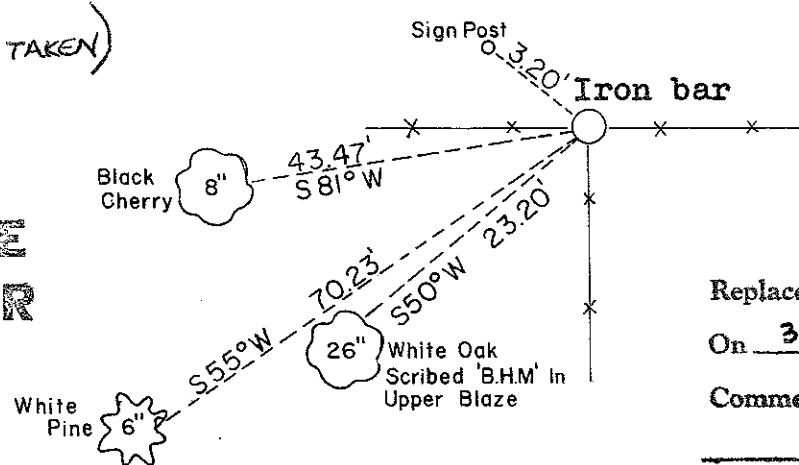
J. Felber

G. Dechant 3-18-1981 (TIES TAKEN)

B. Meyer

COUNTY SURVEYOR FORM NO. 1

Approved: **HARLEY A. SIME**  
**MONROE CO. SURVEYOR**



Replaced 1.B. With Harrison  
On 3/22/82 Crew: Fang Dechant, Meyer  
Comments None

T 19 N R 1 W  
WISCONSIN

SURVEY CONTROL ORDER

Horizontal	_____
Vertical	_____

WISCONSIN COORDINATE SYSTEM

Corner	East (X)	North (Y)	Elevation (Z)	Zone
Control Sta. Name				

City, Village or Town Lincoln  
County of Monroe