

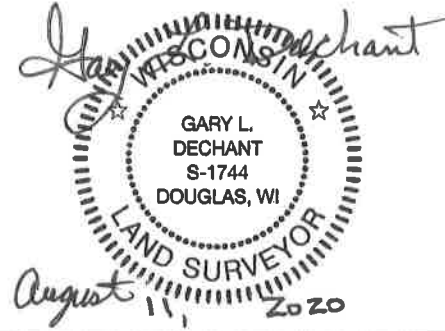
**U.S. PUBLIC LAND CORNER  
MAINTENANCE**

# 55

**Corner ID:** E1/4 Sec.18, T19N-R1W  
**21901182000**

<u>DATE</u>	<u>CREW</u>	<u>MONUMENT INFO</u>
August 5, 2020	Zachariah P. Dechant Gary L. Dechant	Found Railroad spike 5' east of center of Blarney Road and 133 south of center of CTH "EW"

	<u>Compass Bearing</u>	<u>Distance</u>
1) Existing 3/4" round iron bar on section line	South	157.96'
2) Set 2' section of T' post, 2' north of NE corner of porch	S54W	65.00'
3) Existing 3/4" round iron bar on forty line	West	146.31'
4) Set 2' section of T post, down 6", 5' SE of SE corner of sign	N68W	61.27'



I, William C. Jung, do hereby certify that on the 13th day of June 1979, I found (evidence) (no evidence) of the East 1/4 corner of Section 18, T19 N, R 1 W Fourth Principal Meridian, and I re-established said corner according to the Wisconsin Statutes as shown and described hereon.

History of corner establishment since Original Government Survey  
 A.S. Ingalls was at this corner in April of 1873. Fred Holden was at this corner in May of 1902. Harley Sime found a stone at this corner in the Spring of 1963. (This stone may have been destroyed in the interstate construction phase). Marten reset this corner with an iron bar in July of 1971 using Holden's old bearing trees. Marten used this corner again in a August, 1972 survey and in a May, 1973 survey.

Description of corner evidence found:

Dated this 5th day of Feb. 1981.

Found the corner of record, removed the iron bar and replaced it with a Harrison marker.

*William C. Jung*

William C. Jung, R.L.S. 1323  
Title

**See Reverse Side  
 For Maintenance**

**Approved: HARLEY A. SIME  
 MONROE CO. SURVEYOR**

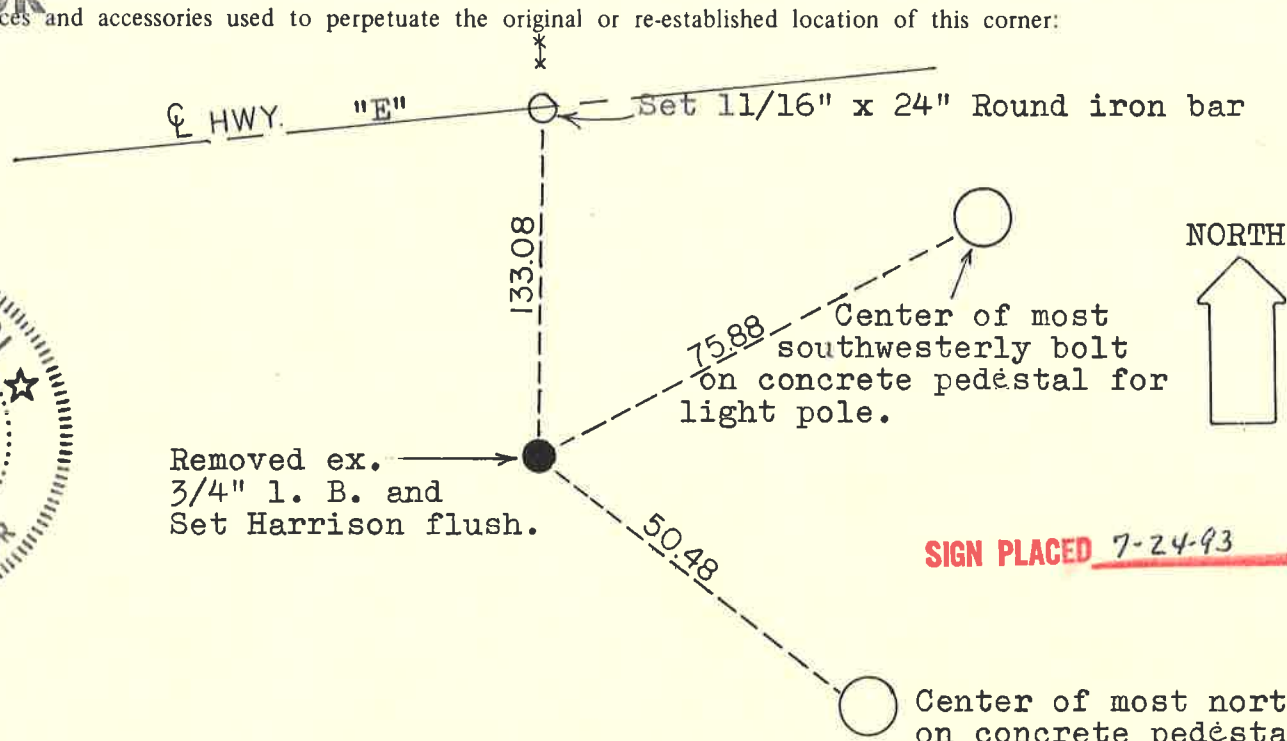
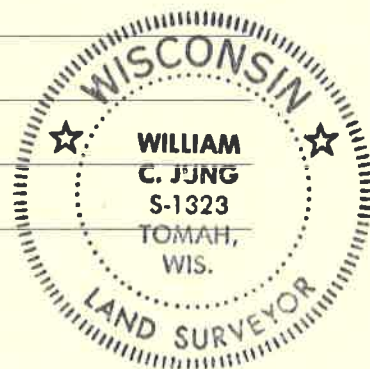
Description of corner and witness monuments, references and accessories used to perpetuate the original or re-established location of this corner:

Witnesses to corner location:

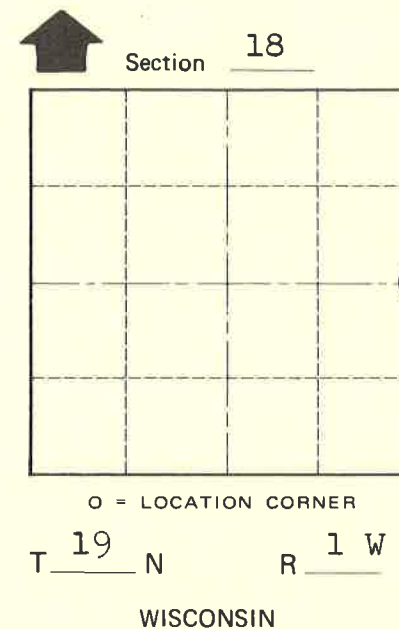
W. Jung

D. Dade

T. Webb



**SIGN PLACED 7-24-83**



SURVEY CONTROL ORDER

Horizontal	_____
Vertical	_____

WISCONSIN COORDINATE SYSTEM

Corner	East (X)	North (Y)	Elevation (Z)	Zone
Control Sta. Name				

City, Village or Town Lincoln  
 County of Monroe

COUNTY SURVEYOR FORM NO. 1