

21901170020

I, Garold A. Sime, do hereby certify that on the 20th day of November 1980, I found (evidence) (~~evidence~~) of the South 1/4 corner of Section 17, T 19 N, R 1 W Fourth Principal Meridian, and I re-established said corner according to the Wisconsin Statutes as shown and described hereon.

Dated this 10th day of March 1981.

Garold A. Sime

Garold A. Sime, R.L.S. 1261
Title

History of corner establishment since Original Government Survey

A.S. Ingalls was at this corner in April of 1873.

Description of corner evidence found:

Set 3/4" hexagon iron bar in fence corner. The 6" White Oak bearing tree called for to the SW of the S1/4 corner, per the Original Government Survey, I could not find. The 24" White Oak shown below has scars as though it has been blazed at one time or another. It is the opinion of this surveyor that the bearing given for the 6" White Oak was in error and that the SW bearing given should have been NW. I set corner using the NW bearing and the distance given.

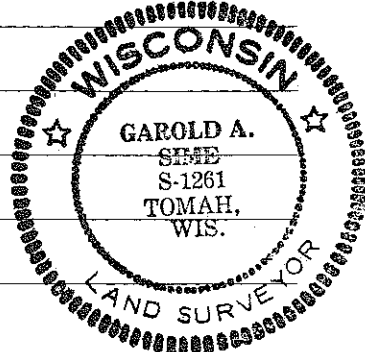
Description of corner and witness monuments, references and accessories used to perpetuate the original or re-established location of this corner:

Approved: **HARLEY A. SIME**
MONROE CO. SURVEYOR

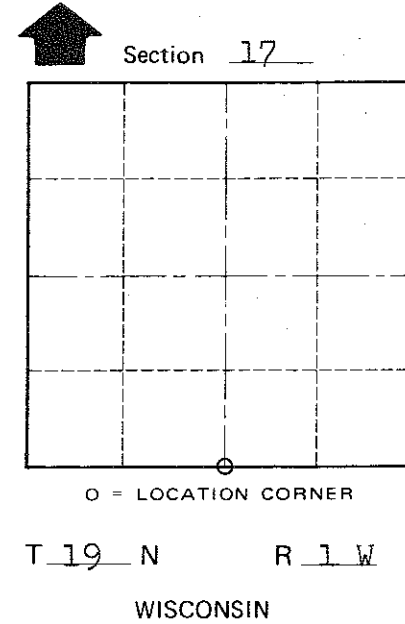
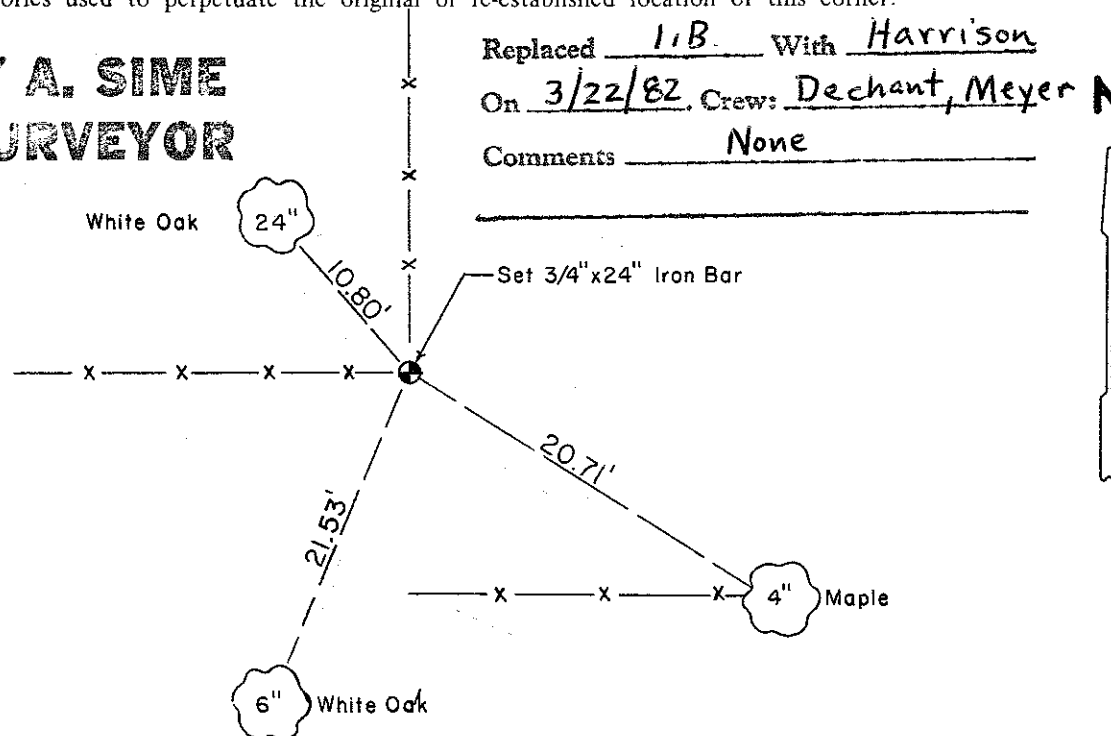
Witnesses to corner location:

Dechant

Meyer



Replaced 1.B. With Harrison
On 3/22/82 Crew: Dechant, Meyer N
Comments None



COUNTY SURVEYOR FORM NO. 1

SURVEY CONTROL ORDER

Horizontal _____
Vertical _____

WISCONSIN COORDINATE SYSTEM

Corner	East (X)	North (Y)	Elevation (Z)	Zone
Control Sta. Name				

~~City, Village or~~ Town Lincoln
County of Monroe
Wisconsin