

66

**U.S. PUBLIC LAND CORNER
MAINTENANCE**

Corner ID : S1/4 Sec. 15, T19N-R1W

21901150020

<u>DATE</u>	<u>CREW</u>	<u>MONUMENT TYPE -----</u>
March 3, 2016	Zachariah P.Dechant Gary L. Dechant	Existing Harrison, top broke off, down 10", 1' south of Broadway Ave, 52' west of driveway F.N. 25555 Broadway

References:

	<u>Bearing</u>	<u>Distance</u>
1) Set 3/4"x24" iron bar, down 6"	N39E	42.89'
2) Set 3/4"x24" iron bar, down 6", 9' east of 8" White Pine	S23E	40.13'
3) Set 3/4"x24" iron bar, down 6, top of dike of cranberry bed	S39W	62.13'
4) Sett 3/4"x24" iron bar, down 6"	N23W	34.56'

Harrison and Reference markers set on straight lines.



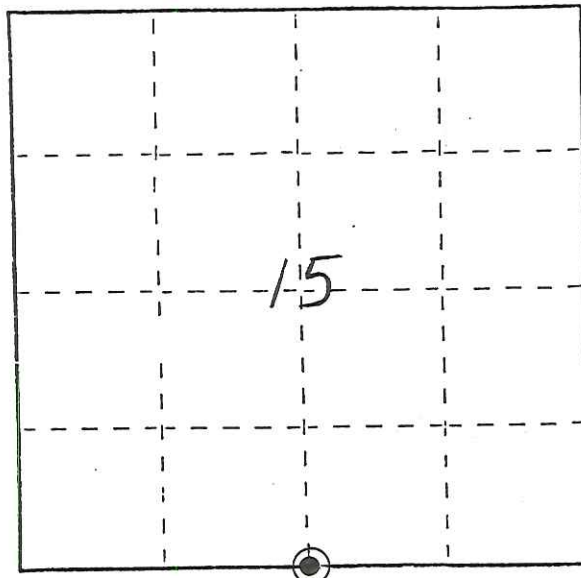
U. S. PUBLIC LAND SURVEY MONUMENT RECORD

INSTRUCTIONS: This record shall show the location of the corner and shall include all of the following nine elements (a through i).

- (a) Identify the corner by reference to the U.S. public land survey system.
- ⊙ = Corner monument restored.

South 1/4 corner of Section 15, T19N, R1W, Fourth Principal Meridian, Town of Lincoln, Monroe County, Wisconsin.

See Reverse Side For Maintenance

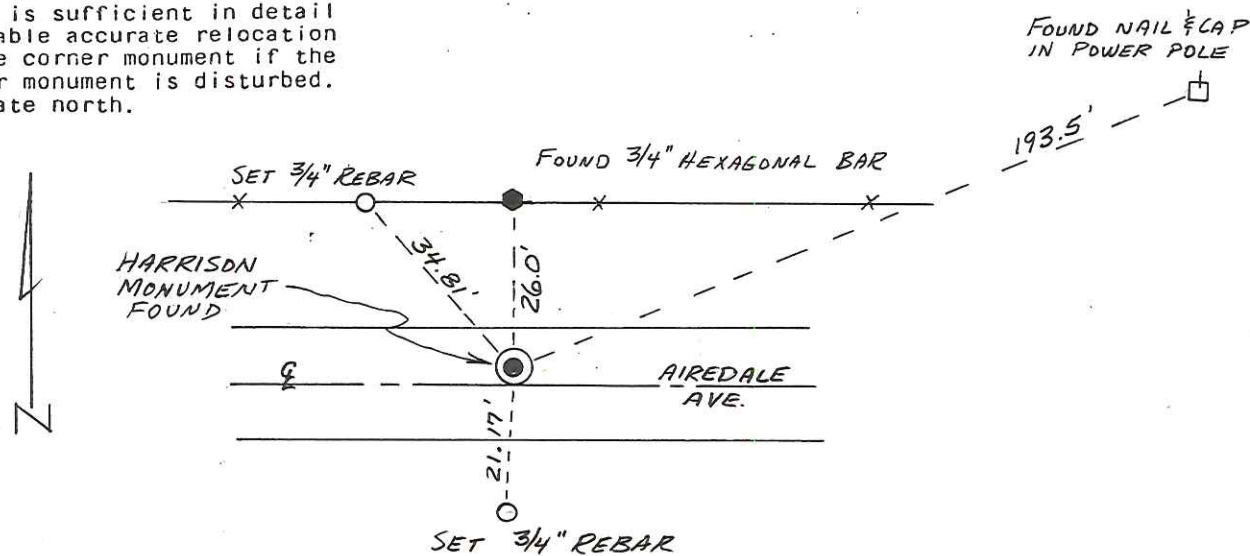


- (b) Describe any record evidence, monument evidence, occupational evidence, testimonial evidence or any other material evidence you considered, and whether the monument was found or placed.

The Harrison monument at this corner and two witness monuments were found on March 30, 1993 by Michael L. Deems. (See previous Certified Land Corner record by Harley A. Sime dated March 2, 1976). Two additional witness monuments were set as shown below.

- (c) In the plan view drawing below, provide reference ties to at least 4 witness monuments, or, if the location is within a municipality, to at least 2 witness monuments. (Witness monuments shall be made of concrete, natural stone, iron or other equally durable material.) Describe witness monuments.

- (d) Show a plan view drawing depicting the relevant monuments and reference ties which is sufficient in detail to enable accurate relocation of the corner monument if the corner monument is disturbed. Indicate north.



21901150020

66

I, Harley A. Sime, do hereby certify that on the _____ day of November 19 75, I found ~~(evidence)~~ (no evidence) of the South 1/4 corner of Section 15, T 19 N, R 1 W Fourth Principal Meridian, and I re-established said corner according to the Wisconsin Statutes as shown and described hereon.

Dated this 2nd day of March 1976.

History of original corner establishment:

Henry Schroeder surveyed along the North line of Section 22 in June of 1893.

Description of corner evidence found:

Except for the road, there was no evidence at this corner. Set the corner on line between the section corners and at a distance from the S.E. corner that is double the distance from the S.E. corner to the occupied forty corner at the S1/16-SE1/4-Sec. 15.

County Surveyor _____

Title

**Approved: HARLEY A. SIME
MONROE CO. SURVEYOR**

Description of corner and witness monuments, references and accessories used to perpetuate the original or re-established location of this corner:

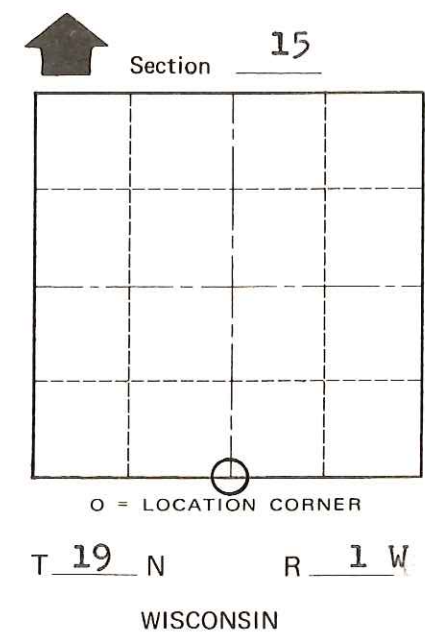
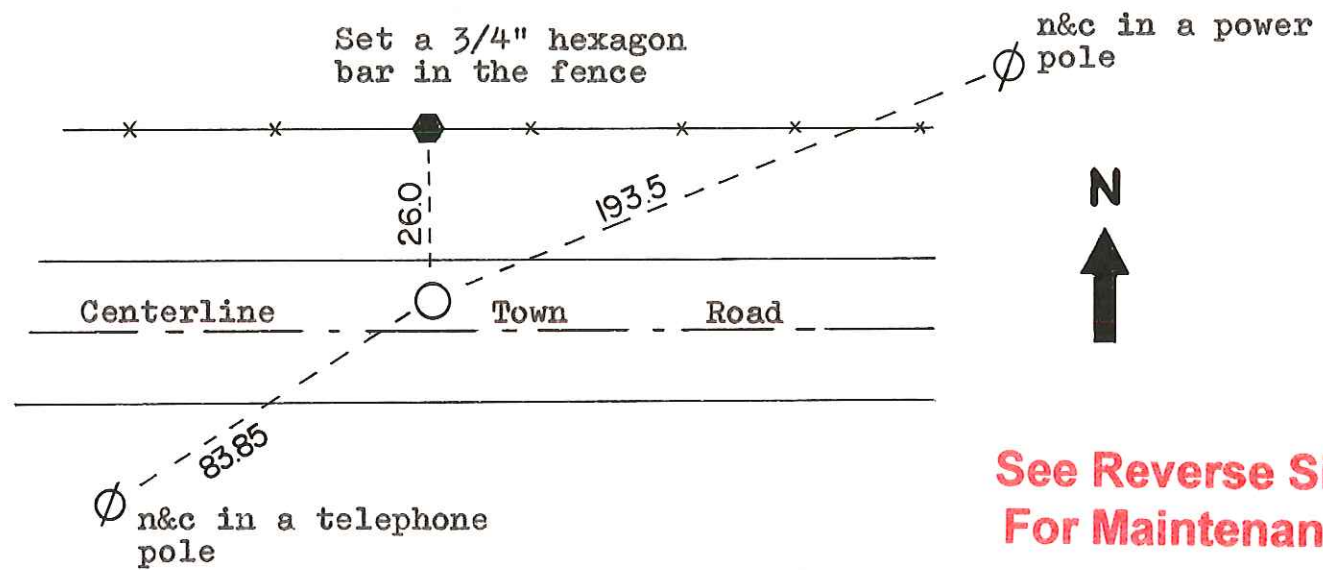
Set a Harrison marker in the road, 1 ft.± North of the centerline.

Witnesses to corner location:

G. Sime - Crew Chief

L. Feddersen

C. Pietz



**See Reverse Side
For Maintenance**

SURVEY CONTROL ORDER

Horizontal	_____
Vertical	_____

WISCONSIN COORDINATE SYSTEM

Corner	East (X)	North (Y)	Elevation (Z)	Zone
Control Sta. Name				

City, Village or Town Lincoln

County of Monroe

COUNTY SURVEYOR FORM NO. 1