

# 65

**U.S. PUBLIC LAND CORNER  
MAINTENANCE**

**Corner ID : SE Sec. 15, T19N-R1W  
21901150000**

<u>DATE</u>	<u>CREW</u>	<u>MONUMENT TYPE -----</u>
March 3, 2016	Zachariah P.Dechant Gary L. Dechant	Existing Harrison intact, up 2", Set sign 1' west

References:

	<u>Bearing</u>	<u>Distance</u>
1) Set 3/4"x24" iron bar, down 6", 4' SW of 6" Black Oak	N12E	39.39'
2) Set 3/4"x24" iron bar, down 6", 4' NW of 10" Double White Oak that is being used as a fence corner	S70E	21.30'
3) Set 3/4"x24" iron bar, down 6, 5' east of 12" Black Oak	S9E	22.99'
4) Set 3/4"x24" iron bar, down 6", 7' east of 18" White Pine	N31W	49.74'



I, Harley A. Sime, do hereby certify that on the \_\_\_\_\_ day of November 19 75, I found ~~(evidence)~~ (no evidence) of the Southeast corner of Section 15, T 19 N, R 1 W Fourth Principal Meridian, and I re-established said corner according to the Wisconsin Statutes as shown and described hereon.

Dated this 2nd day of March 1976.

History of original corner establishment:

Henry Schroeder was at this corner in June of 1893.

Fred Holden set an iron pipe at this corner in January of 1902.

Description of corner evidence found:

There was little evidence at this corner. The corner was set at the P.I. of the Town Road. This fits the road to the West and the fence at the East 1/4 corner of Section 15.

Looked for but could not find Holden's pipe.

**See Reverse Side For Maintenance**

County Surveyor ~~Approved:~~ **HARLEY A. SIME**  
**MONROE CO. SURVEYOR**

Description of corner and witness monuments, references and accessories used to perpetuate the original or re-established location of this corner:

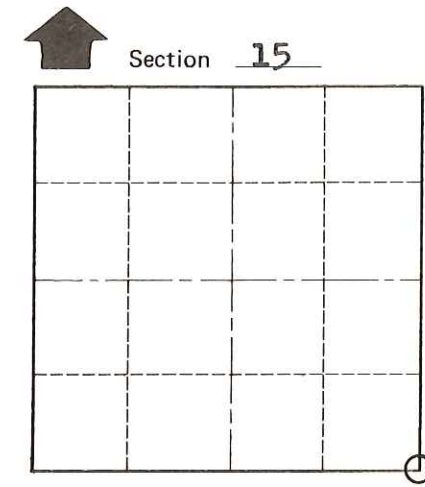
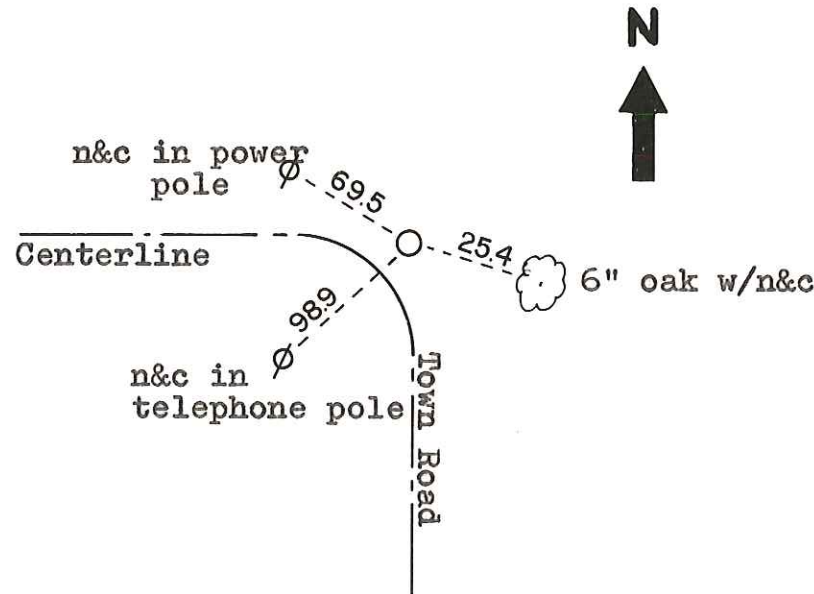
Set a Harrison marker at the road P.I., 48'± from the road centerline.

Witnesses to corner location:

~~G. Sime-Crew Chief~~

L. Feddersen

C. Pietz



O = LOCATION CORNER  
T 19 N R 1 W  
WISCONSIN

SURVEY CONTROL ORDER

Horizontal	_____
Vertical	_____

WISCONSIN COORDINATE SYSTEM

Corner	East (X)	North (Y)	Elevation (Z)	Zone
Control Sta. Name				

City, Village or Town Lincoln

County of Monroe

COUNTY SURVEYOR FORM NO. 1