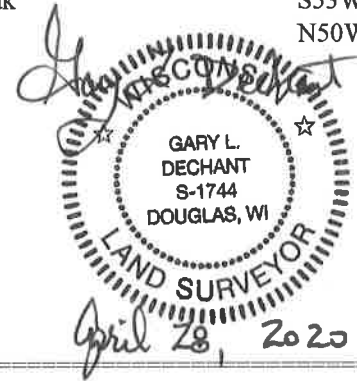


**U.S. PUBLIC LAND CORNER
MAINTENANCE**

106

Corner ID: S1/4 Sec. 27, T19N-R1W
21901270020

<u>DATE</u>	<u>CREW</u>	<u>MONUMENT INFO</u>	<u>Compass Bearing</u>	<u>Distance</u>
April 17, 2020	Zachariah P. Dechant Gary L. Dechant	Existing Harrison intact, set sign 1' north. Falls 50' west of trail, 220' north of Cosalzwedel Ave. Small pit 3.5' east		
1)	Set 3/4"x24" round iron bar, down 6", 4' SW of 8" White pine		N14E	18.79'
2)	Set 3/4"x24" round iron bar, down 6", 4' NW of 12" Red Pine		S36E	27.88'
3)	Set 3/4"x24" round iron bar, down 6", 4' NE of 14" White Oak		S53W	22.90'
4)	Set 3/4"x24" round iron bar, down 6", 4" SE of 12" Red Pine		N50W	44.36'





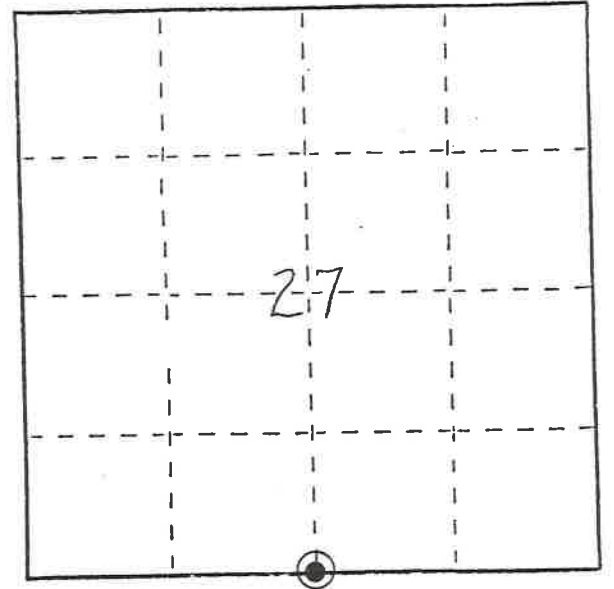
Stock No. 26273

U. S. PUBLIC LAND SURVEY MONUMENT RECORD

INSTRUCTIONS: This record shall show the location of the corner and shall include all of the following nine elements (a through i).

- (a) Identify the corner by reference to the U.S. public land survey system.
- ⊙ = Corner monument restored.

South 1/4 corner of Section 27, T19N, R1W, Fourth Principal Meridian, Town of Lincoln, Monroe County, Wisconsin.



See Reverse Side For Maintenance

- (b) Describe any record evidence, monument evidence, occupational evidence, testimonial evidence or any other material evidence you considered, and whether the monument was found or placed.

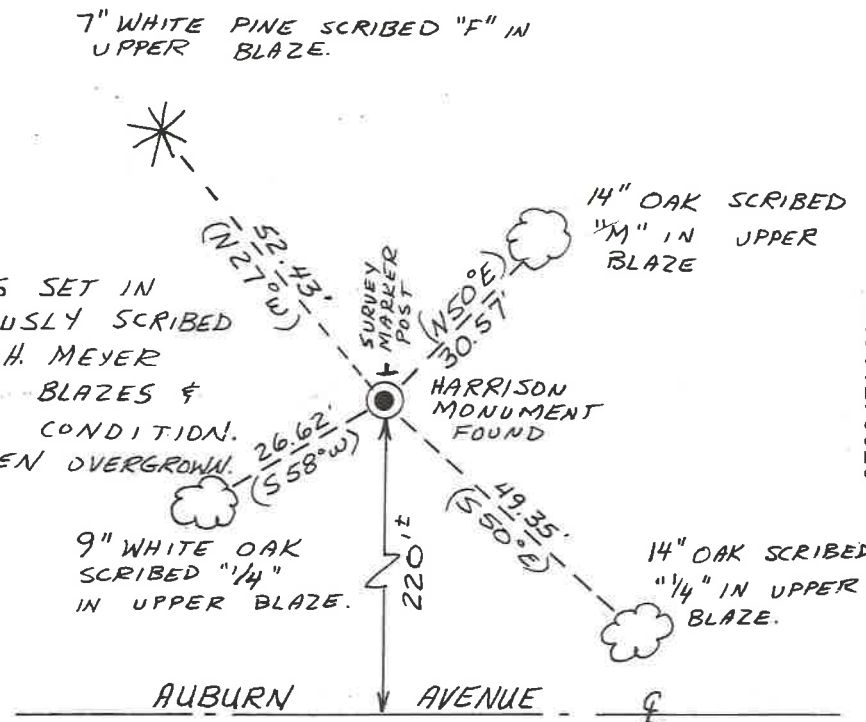
The Harrison monument at this corner and four blazed and scribed trees were found on April 19, 1993 by Daniel M. Murray. (See previous Certified Land Corner record by Bryan H. Meyer dated September 8, 1989). The nails in these trees were overgrown so new tie nails were set in the face of the same trees as shown below.

- (c) In the plan view drawing below, provide reference ties to at least 4 witness monuments, or, if the location is within a municipality, to at least 2 witness monuments. (Witness monuments shall be made of concrete, natural stone, iron or other equally durable material.) Describe witness monuments.

- (d) Show a plan view drawing depicting the relevant monuments and reference ties which is sufficient in detail to enable accurate relocation of the corner monument if the corner monument is disturbed. Indicate north.

ALL TIES ARE 60 d. NAILS SET IN THE SAME TREES PREVIOUSLY SCRIBED AND BLAZED BY BRYAN H. MEYER ON FEB. 16, 1989. THE BLAZES & SCRIBES ARE IN GOOD CONDITION. PREVIOUS NAILS HAVE BEEN OVERGROWN.

() BEARING FROM PREVIOUS TIE SHEET, NOT MEASURED HERE.



e) Describe any material discrepancy between the location of the corner as restored or reestablished and the location of that corner as previously restored or reestablished by distance and direction. Show the discrepancy on the plan view drawing under (d), above. Show the distances between the corner as previously restored or reestablished and (1) the corner as restored or reestablished, and (2) to at least 2 of the witness monuments shown on the drawing in (d), above.

No known discrepancies.

(f) Was the corner restored through acceptance of (1) an obliterated evidence location, or, (2) a found perpetuated location?

A found perpetuated location.

(g&h) Was the corner reestablished through lost corner proportionate methods? If so, show the method, including the directions and distances to other public land survey corners used as evidence or used for proportioning in determining the corner location?

Not a lost corner.

(i) I, Ross A. Michaels
(type or print name) certify that the corner location shown on this record was determined by me or under my direction and control and that this U.S. Public Land Survey Monument Record is correct and complete to the best of my knowledge and belief.

Ross A. Michaels Oct. 22, 1993
Date



I, Bryan H. Meyer, do hereby certify that on the 16th day of February 1989, I found (evidence) ~~no evidence~~ of the North $\frac{1}{4}$ corner of Section 34, T 19 N, R 1W Fourth Principal Meridian, and I re-established said corner according to the Wisconsin Statutes as shown and described hereon.

Dated this 8th day of Sept. 1989.

Bryan H. Meyer

Deputy County Surveyor
Title

History of corner establishment since Original Government Survey

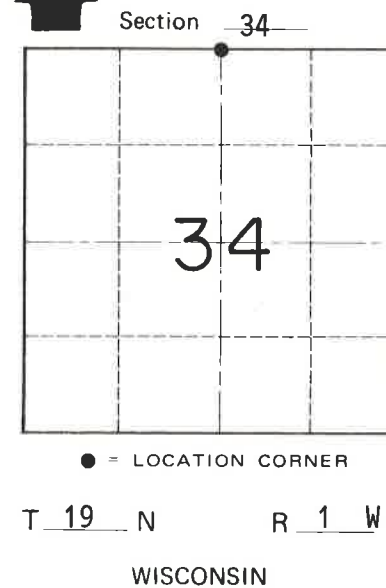
This corner was established by Doug Malliet in April of 1978. Mr. Malliet shows this corner on his July 20, 1977 surveys. Ron Parish used this corner as shown on his December 1987 map. Mr. Parish was here again in May of 1989.

Description of corner evidence found:

I tied into this corner while doing some work in Section 34 (to establish the East $\frac{1}{4}$ corner). I found the Harrison marker in place but the trees shown on Mr. Malliet's tie sheet were gone. I struck four new trees and got ties as shown below.



H. A. Sime and Associates
P. O. Box 705
Tomah, Wisconsin.



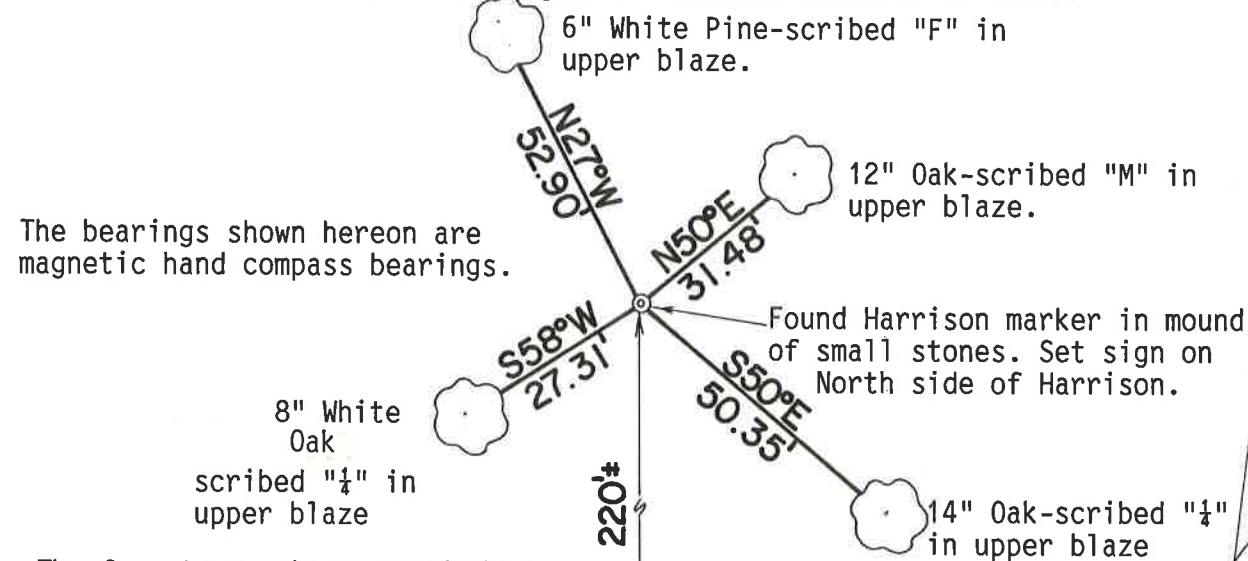
Description of corner and witness monuments, references and accessories used to perpetuate the original or re-established location of this corner:

Crew: Meyer, Forsythe
Date: February 16, 1989
Weather: Cloudy, 10°±
Witnesses to corner location:

Bryan H. Meyer

Brian Forsythe

**See Reverse Side
For Maintenance**



The four trees shown are double blazed; the distance shown to each is to a nail set in a hack in the side of each tree.

AUBURN AVENUE

WISCONSIN COORDINATE SYSTEM

SURVEY CONTROL ORDER

Horizontal	_____
Vertical	_____

Corner	East (X)	North (Y)	Elevation (Z)	Zone
Control Sta. Name				

City, Village or Town of Lincoln

County of Monroe

I, Douglas J. Malliet, do hereby certify that on the 19th day of April 1978, I found ~~(XXXXXX)~~ (no evidence) of the S₁ corner of Section 27, T 19 N, R 1 W Fourth Principal Meridian, and I re-established said corner according to the Wisconsin Statutes as shown and described hereon.

Dated this 19th day of May 1978.

Douglas J. Malliet

REGISTERED LAND SURVEYOR, S-1266
Title

History of original corner establishment:

No subsequent history of monument perpetuation since the original U.S. Government Survey.

Description of corner evidence found:

This corner was established on line and half-way between the SW and SE corners of Sec. 27. There was no evidence of fences, tree lines or other signs of occupation at this location.

See Reverse Side For Maintenance

Description of corner and witness monuments, references and accessories used to perpetuate the original or re-established location of this corner.

Witnesses to corner location:

Douglas J. Malliet

Lawrence A. Feddersen



WOODS

nail & washer in blazed 10" Black Oak

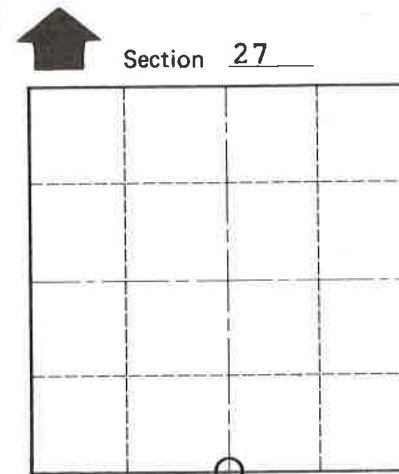
set Harrison monument up 2" and surrounded by small stones



nail & washer in blazed 8" Black Oak

WOODS

C/L AUBURN AVENUE



O = LOCATION CORNER

T 19 N R 1 W
WISCONSIN

SURVEY CONTROL ORDER

Horizontal	_____
Vertical	_____

WISCONSIN COORDINATE SYSTEM

Corner	East (X)	North (Y)	Elevation (Z)	Zone
Control Sta. Name				

City, Village or Town of LINCOLN

County of MONROE

COUNTY SURVEYOR FORM NO. 1