

**U.S. PUBLIC LAND CORNER
MAINTENANCE**

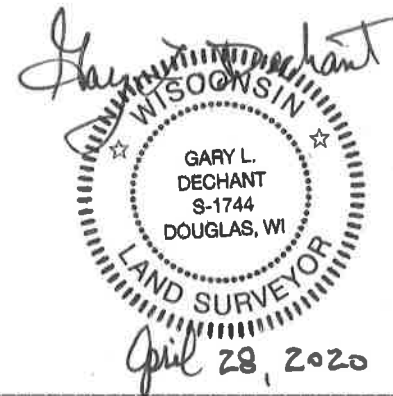
105

Corner ID: NE Sec. 34, T19N-R1W
21901270000

<u>DATE</u>	<u>CREW</u>	<u>MONUMENT INFO</u>
April 17, 2020	Al Hoff Gary L. Dechant	Existing 1/4" round iron bar REFERENCE MARKERS,

Compass Bearing Distance

- 1) Existing 1/4" round iron bar, N89°06'50"E, 15.40' of actual corner
- 2) Existing 1/4" round iron bar, S89°06'50"W, 22.33' of actual corner
- 3) Set 3/4"x24" round iron bar, N89°06'50"E, 55.13' of actual corner, **14' WEST OF CONCRETE PAD**
- 4) Set 3/4"x24" round iron bar S89°06'50"W, 80.04 feet of actual corner, **DIKE**
- 5) Set 3/4"x24" round iron bar at dike intersection N50°20'28"W, 115.33 from actual corner
- 6) Set 3/4"x24" round iron bar center of dike N47°55'46"E, 106.01' from actual corner



I, Bryan H. Meyer, do hereby certify that on the 16th day of February 19 89, I found (evidence) ~~no evidence~~ of the Northeast corner of Section 34, T 19 N, R 1 W Fourth Principal Meridian, and I re-established said corner according to the Wisconsin Statutes as shown and described hereon.

Dated this 8th day of Sept. 19 89.
Bryan H. Meyer
Deputy County Surveyor

History of corner establishment since Original Government Survey

Doug Malliet established this corner in April of 1978 by setting reference markers East and West of the actual corner. The actual corner could not be set because it fell in a drainage ditch. Ron Parish probably used this corner location in December of 1987. Mr. Parish was here again in May of 1989.
Description of corner evidence found:

I tied into Mr. Malliet's reference markers to help me establish the East 1/4 corner of Section 34. I found that 2 of 3 of Mr. Malliet's ties to the reference corners were gone (the power pole had been replaced; the Jack Pine had been cut down). I got new ties to the reference markers as shown below.



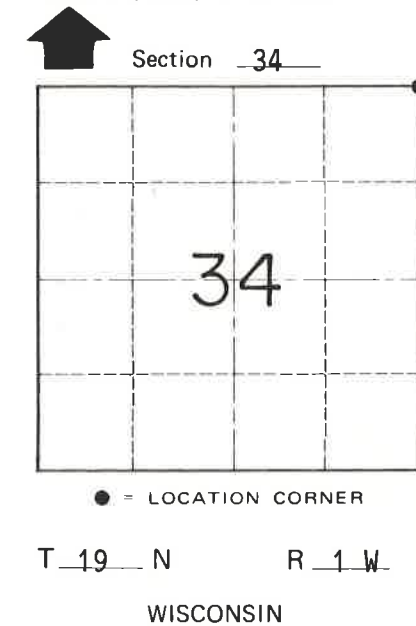
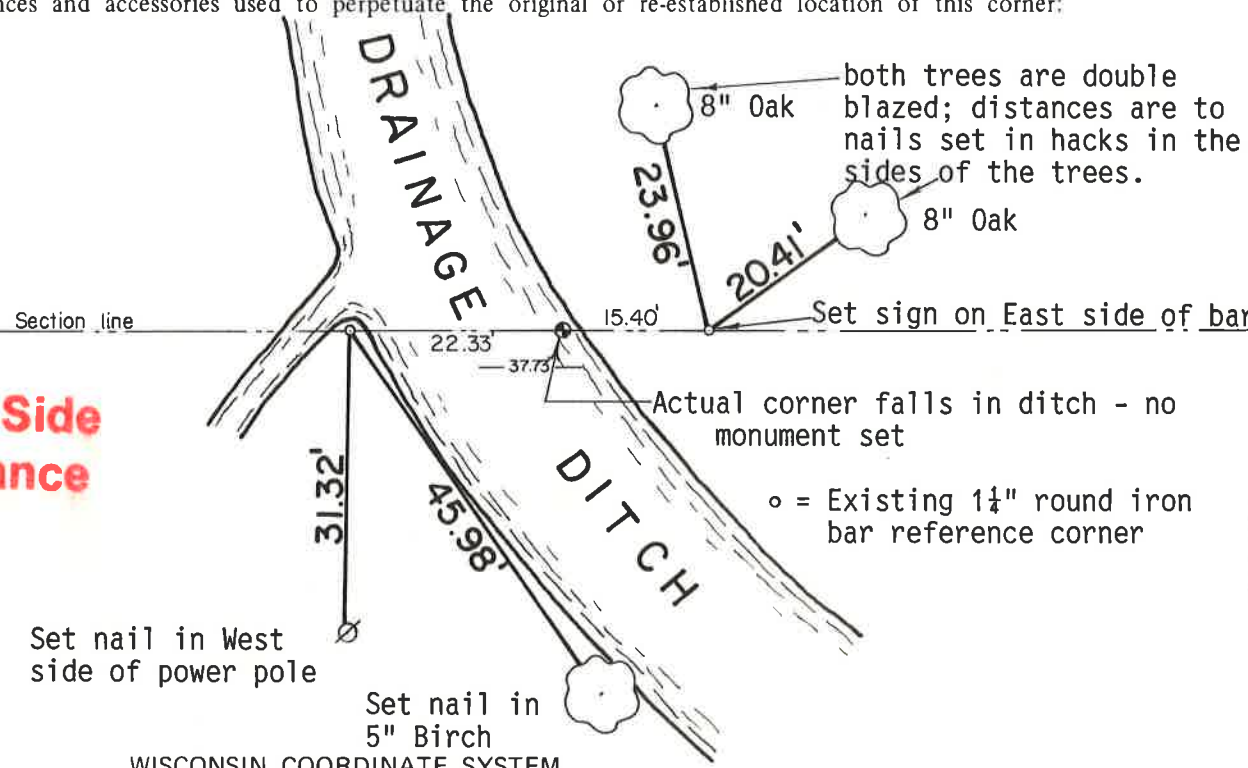
H. A. Sime and Associates
P. O. Box 705, Tomah,
Wisconsin 54660
Phone: (608)-372-5392

Description of corner and witness monuments, references and accessories used to perpetuate the original or re-established location of this corner:

Crew: Meyer, Forsythe
Date: February 16, 1989
Weather: Cloudy, 10°±
Witnesses to corner location:

Bryan H. Meyer
Brian Forsythe

**See Reverse Side
For Maintenance**



SURVEY CONTROL ORDER

Horizontal _____
Vertical _____

Corner	East (X)	North (Y)	Elevation (Z)	Zone
Control Sta. Name				

WISCONSIN COORDINATE SYSTEM

~~City, Village or~~ Town of Lincoln
County of Monroe

COUNTY SURVEYOR FORM NO. 1

I, Douglas J. Malliet, do hereby certify that on the 19th day of April 19 78, I found (evidence) ~~(XXXXXX)~~ of the Southeast corner of Section 27, T 19 N, R 1 W, Fourth Principal Meridian, and I re-established said corner according to the Wisconsin Statutes as shown and described hereon.

Dated this 19th day of May 19 78.

Douglas J. Malliet

Registered Land Surveyor, S-1266
Title

History of original corner establishment:

No Subsequent history of monument perpetuation since the original U.S. Government Survey.

Description of corner evidence found:

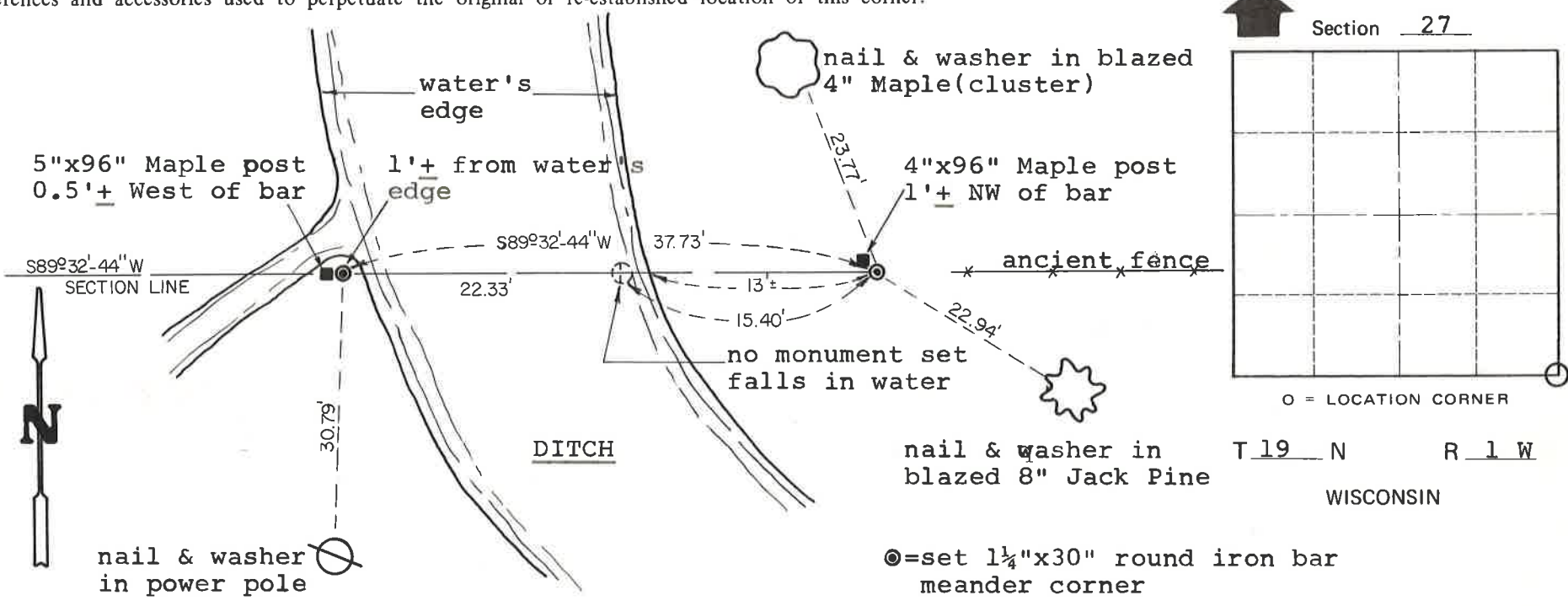
This corner was established on a line produced between the SW corner of Sec. 27 and an ancient, fallen fence at the location of the SE corner of Sec. 27 (as shown to us by L. Salzwedel) and at the record distance from the SW corner of Sec. 27. L. Salzwedel told us that the drainage ditch had been dug on the North-South section line and that the fence was on the East-West section line. My computations indicated that using the fence and the record Government distance would agree reasonably with field and parole evidence we had knowledge of at the time.

Description of corner and witness monuments, references and accessories used to perpetuate the original or re-established location of this corner:

Witnesses to corner location:

Douglas J. Malliet

Lawrence A. Feddersen



See Reverse Side For Maintenance

SURVEY CONTROL ORDER

Horizontal	_____
Vertical	_____

WISCONSIN COORDINATE SYSTEM

Corner	East (X)	North (Y)	Elevation (Z)	Zone
Control Sta. Name				

City, Village or Town of LINCOLN

County of MONROE

COUNTY SURVEYOR FORM NO. 1