

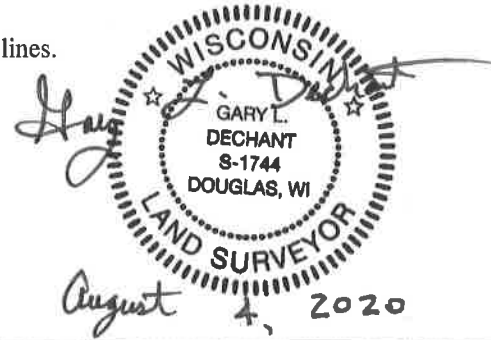
**U.S. PUBLIC LAND CORNER
MAINTENANCE**

99

**Corner ID: W1/4 Sec.25, T19N-R1W
21901262000**

<u>DATE</u>	<u>CREW</u>	<u>MONUMENT INFO</u>										
July 30, 2020	Zachariah P. Dechant Gary L. Dechant	Corner destroyed. Reset corner with railroad spike. Reset from previous survey records CSR 2320, field notes and section summaries. 2' east of center line of Concord Ave. In line with fence running east. Iron bar 24.75' west and power pole used in 1980 gone.										
		<table border="1"><thead><tr><th><u>Compass Bearing</u></th><th><u>Distance</u></th></tr></thead><tbody><tr><td>1) Set 2' section of steel T post, down 6" in field, hit hard pan</td><td>N43E 53.65'</td></tr><tr><td>2) Set 2' section of T' post, down 10" in filed</td><td>S50E 45.74'</td></tr><tr><td>3) Set 2' section of T post, down 6", 6' NE of 12" Choke cherry (1980 BT)</td><td>S43W 102.64'</td></tr><tr><td>4) Set 2' section of T post, down 6", 4' SE of 12" Jack Pine</td><td>N50W 78.99'</td></tr></tbody></table>	<u>Compass Bearing</u>	<u>Distance</u>	1) Set 2' section of steel T post, down 6" in field, hit hard pan	N43E 53.65'	2) Set 2' section of T' post, down 10" in filed	S50E 45.74'	3) Set 2' section of T post, down 6", 6' NE of 12" Choke cherry (1980 BT)	S43W 102.64'	4) Set 2' section of T post, down 6", 4' SE of 12" Jack Pine	N50W 78.99'
<u>Compass Bearing</u>	<u>Distance</u>											
1) Set 2' section of steel T post, down 6" in field, hit hard pan	N43E 53.65'											
2) Set 2' section of T' post, down 10" in filed	S50E 45.74'											
3) Set 2' section of T post, down 6", 6' NE of 12" Choke cherry (1980 BT)	S43W 102.64'											
4) Set 2' section of T post, down 6", 4' SE of 12" Jack Pine	N50W 78.99'											

Corner and reference markers set on straight lines.



I, Harley A. Sime do hereby certify that on the twenty-seventh day of June 1980 I found (evidence) ~~(no evidence)~~ of the West 1/4 corner of Section 25, T 19 N, R 1 W Fourth Principal Meridian, and I re-established said corner according to the Wisconsin Statutes as shown and described hereon.

Dated this 26th day of Feb. 1981.

Harley A. Sime - R.L.S. 355

County Surveyor-Monroe County, Wisconsin.

Title

History of corner establishment since Original Government Survey

Fred Holden shows an iron bar 24.75 feet West of the corner in his notes of January and June, 1901.

Description of corner evidence found:

The corner was reestablished bu using Holden's old reference iron. Set a 1 1/4"x30" iron bar.

See Reverse Side For Maintenance

Description of corner and witness monuments, references and accessories used to perpetuate the original or re-established location of this corner:

Witnesses to corner location:

Gary Dechant

Charles Dade

William C. Jung

William C. Jung, R.L.S. 1323



Power Pole With Nail & Cap

69.60'

AUBURN COURT

Ex. Iron Bar 24.75'

1 1/4" Iron Bar

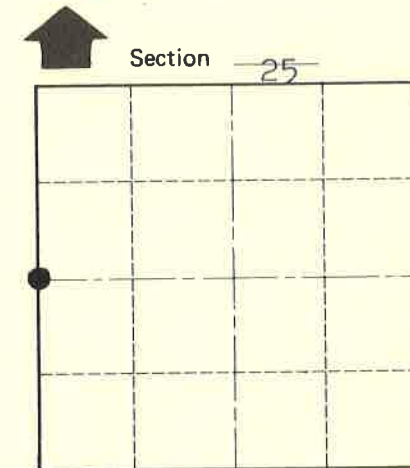
17'±

SIGN PLACED 12/24/86 Kenworthy, Wilhite

5" Choke Cherry Double Blazed With Nail & Cap Set



109.12'



• = LOCATION CORNER

T 19 N R 1 W

WISCONSIN

**Approved: HARLEY A. SIME
MONROE CO. SURVEYOR**

SURVEY CONTROL ORDER

Horizontal _____

Vertical _____

WISCONSIN COORDINATE SYSTEM

Corner	East (X)	North (Y)	Elevation (Z)	Zone
Control Sta. Name				

City, Village or Town of Lincoln

County of Monroe

Wisconsin

COUNTY SURVEYOR FORM NO. 1