

# 100

# U.S. PUBLIC LAND CORNER MAINTENANCE

Corner ID : E1/4 Sec.25, T19N-R1W  
21901252000

<u>DATE</u>	<u>CREW</u>	<u>MONUMENT TYPE -----</u>
December 27, 2013	Zachariah P.Dechant Gary L. Dechant	Found 3/4" iron bar destroyed. Did not remove as it was frozen in road. Reset from NE corner Sec 25 and E1/4 Sec. 36 and remaining tie of 1981 certified land corner, 6" Maple 55.52' to SW Reset with mag nail, 1/2' west of found destroyed iron bar

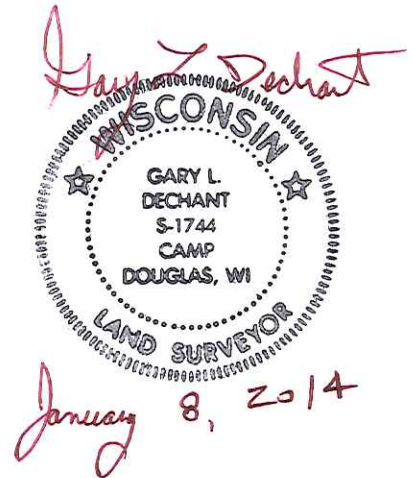
References:

- 1) Set 3/4"x24" hexagon iron bar, down 4", 4' east of 6" White Oak down 6"
- 2) Set 3/4"x24" hexagon iron bar, down 6", 13' NW of shallow ditch running in a NE-SW direction
- 3) Set 3/4"x24" hex iron bar, down 6"
- 4) Set 3/4"x24" hex iron bar, down 6"
- 5) Set 3/4"x24" hex iron bar on forty line, flush, in fence line

<u>Bearing</u>	<u>Distance</u>
N59E	50.44'
S60E	54.31'
S59W	71.76'
N60W	47.43'
West	42.04'

Mag nail (E1/4) on straight lines with reference markers.

**COORDINATES:**



21901252000

I, Harley A. Sime, do hereby certify that on the twenty-seventh day of June 1980 I found evidence of the East 1/4 corner of Section 25, T 19 N, R 1 W Fourth Principal Meridian, and I re-established said corner according to the Wisconsin Statutes as shown and described hereon.

History of corner establishment since Original Government Survey

Fred Holden shows an iron bar at this corner in his notes of June, 1901. Kennedy was at this corner in his survey of the late 1930's. In his survey of July, 1954, Bergman shows Holden's iron bar as being 33 feet West of the corner.

Description of corner evidence found:

Accepted the occupied corner as the best available evidence of the original government corner. This location fits very well all the field evidence found and measurements taken along 2 1/2 miles of the town line and in Section 25. Set a 3/4"x24" iron bar.

Dated this 26th day of Feb. 1981.

Harley A. Sime - R.L.S. 355

County Surveyor-Monroe County, Wisconsin  
Title

COUNTY SURVEYOR FORM NO. 1

Description of corner and witness monuments, references and accessories used to perpetuate the original or re-established location of this corner:

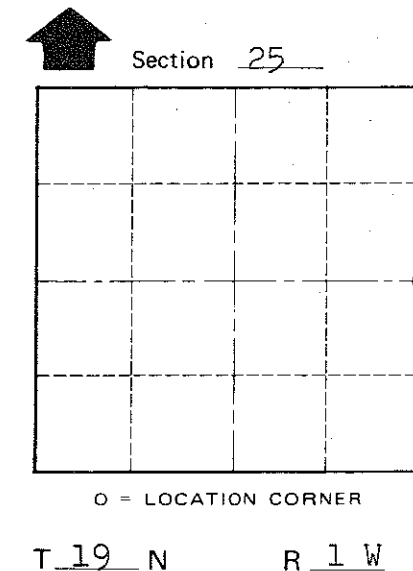
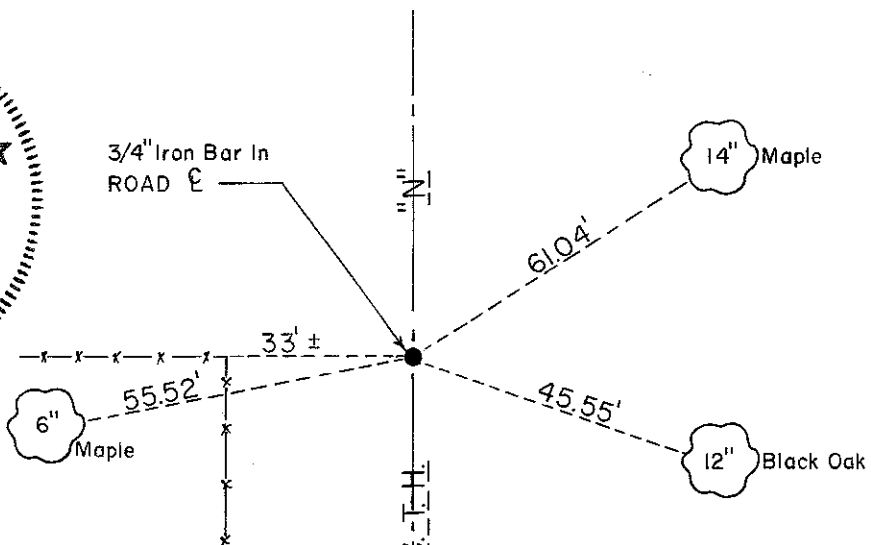
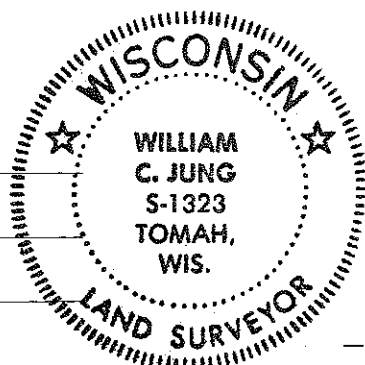
Witnesses to corner location:

Gary Dechant

Chuck Dade

William C. Jung

William C. Jung, R.L.S. 1323



NOTE:  
All Trees Double Blazed With Nail & Cap's Set

Approved: **HARLEY A. SIME**  
**MONROE CO. SURVEYOR**

SURVEY CONTROL ORDER

Horizontal	_____
Vertical	_____

WISCONSIN COORDINATE SYSTEM

Corner	East (X)	North (Y)	Elevation (Z)	Zone
Control Sta. Name				

                     Town of Lincoln  
County of Monroe  
Wisconsin